

# TRADE CATALOGUE



**Grassroutes**  
**LEISURE LTD**

*Suppliers to the leisure & leisure vehicle industry*



JERRY CANS



WATER & UNDERSLUNG TANKS



WHEEL ARCH TANKS



FIXINGS & CONNECTORS



GAUGES



**01963 824792**

**[www.grassroutesleisure.co.uk](http://www.grassroutesleisure.co.uk)**



# JERRY CANS

## JERRY CAN

### 12 LITRES

A standard wide neck canister with built in handle.

Suitable for fresh water.

**Colour:** White

**Weight:** 0.6 kg

**Outlet:** ¾" BSP

**Size:** 410 x 255 x 125 mm (W x H x D)

**Lid:** 3"

### 13 LITRES

Made from WRAS approved polyethylene & suitable for drinking water. Includes ¾" BSP tap.

**Colour:** White

**Weight:** 1.8 kg

**Outlet:** ¾" BSP

**Size:** 505 x 325 x 100 mm (W x H x D)

**Lid:** 2"

### 20 LITRES

A multi wide neck canister with built in handle & tap.

Suitable for fresh water.

**Colour:** White

**Weight:** 0.8 kg

**Outlet:** 2" BSP

**Size:** 350 x 300 x 240 mm (W x H x D)

**Lid:** 3.5"



32022 12L



13L 32083



UK MADE



32024 20L



# JERRY CAN

5 LITRES | 10 LITRES | 25 LITRES

These jerry cans are manufactured from HDPE plastic. They can withstand tough commercial and industrial environments.

HDPE has high impact-resistance and high resistance against many strong and weak chemicals. It is ideal for storing oils, detergents, lubricants and fuels safely. Food grade approved and UN certified, these jerry cans come with a sturdy screw cap for extra protection.

Ideal for leisure vehicles as they can be used with submersible pumps. They are stackable and are available in three sizes:-

## 5 LITRES

**Colour:** White

**Size:** 190 x 260 x 140 mm (W x H x D)

**Weight :** 0.3 kg

**Outlet:** 2" BSP

**Lid:** 2"

## 10 LITRES

**Colour:** White

**Size:** 230 x 320 x 190 mm (W x H x D)

**Weight :** 0.4 kg

**Outlet:** 2" BSP

**Lid:** 2"

## 25 LITRES

**Colour:** White

**Size:** 300 x 460 x 240 mm (W x H x D)

**Weight:** 0.8 kg

**Outlet:** 2" BSP

**Lid:** 2"



UK MADE



ACCESSORIES

ADD  
ON

## JERRY CAN TAP

Wide nozzle. Available in two sizes:

**30097** DIN51 for **30091/30092**

**30098** DIN61 for **30090**

**30084** DIN61 for **30090**





## JERRY CAN

10 LITRES | 20 LITRES | 25 LITRES | 30 LITRES

These heavy duty plastic jerry cans are produced in Italy and made of polyethylene, a plastic material that possesses the HDPE certification. They are suitable for foods and liquids. We offer 4 sizes all with convenient pouring spout.

### 10 LITRES

**Colour:** White

**Size:** 260 x 360 x 145 mm (W x H x D)

**Weight:** 0.4 kg

**Outlet:** ½" BSP

**Lid:** 1.5"

### 20 LITRES

**Colour:** White

**Size:** 340 x 440 x 190 mm (W x H x D)

**Weight:** 0.7 kg

**Outlet:** ½" BSP

**Lid:** 1.5"

### 25 LITRES

**Colour:** White

**Size:** 340 x 480 x 220 mm (W x H x D)

**Weight:** 0.8 kg

**Outlet:** ½" BSP

**Lid:** 1.5"

### 30 LITRES

**Colour:** White

**Size:** 340 x 510 x 240 mm (W x H x D)

**Weight:** 1 kg

**Outlet:** ½" BSP

**Lid:** 1.5"





## WASTE WATER TANK

23 LITRES

Black plastic 23 litre waste water tank with 2 x 64 mm caps.

**Colour:** Black

**Size:** 410 x 335 x 210 mm (W x H x D)

**Weight:** 1 kg

**Outlet:** 2" BSP

**Lid:** 2"

23L 30089



UK MADE

## WATER ROLL TANKS

23 LITRES

Fiamma roll-tanks with fold down handle making them easy to move and store. Compact size – fits through normal sized vehicle doors.

**Colour :** Blue - fresh water : Grey - waste water

**Size:** 330 x 500 - 1000 x 250 mm (W x H x D)

**Weight:** 3 kg

**Outlet:** 1" BSP

**Lid:** 3"

23L 30146



23L 30144



Waste tank includes discharge cap.





# WATER TANKS

## TOWER TANKS

### 25 LITRES

Made from WRAS approved polyethylene suitable for drinking water & other liquids.

**Colour:** White

**Size:** 260 x 435 x 340 mm (W x H x D)

**Weight:** 3 kg

**Outlet:** ¾" BSP

**Lid:** 4"

25L 32060



UK MADE



### 28 LITRES

Made from WRAS approved polyethylene suitable for drinking water & other liquids.

**Colour:** White

**Size:** 200 x 580 x 270 mm (W x H x D)

**Weight:** 3 kg

**Outlet:** ½" BSP

**Lid:** 4" Ext Plain

28L 32061



UK MADE



### 31 LITRES

Made from WRAS approved polyethylene suitable for drinking water & other liquids.

**Colour:** White

**Size:** 176 x 460 x 436 mm (W x H x D)

**Weight:** 3.5 kg

**Outlet:** 4 x ½" BSP - inlet, vent & 2 outlets

**Lid:** 5" Int Plain

+ PLUMB KIT  
32105



UK MADE



+ FITTING KIT  
32104

31L 32069

### 36 LITRES

Made from WRAS approved polyethylene suitable for drinking water & other liquids.  
With vented screw cap.

**Colour:** White

**Size:** 290 x 330 x 430 mm (W x H x D)

**Weight:** 3.2 kg

**Outlet:** ¾" BSP

**Lid:** 6" Int Plain

36L 32062



UK MADE







## FLAT WATER TANKS

### 12 LITRES

Made from WRAS approved polyethylene suitable for drinking water & other liquids.

**Colour:** White

**Size:** 200 x 150 x 420 mm (W x H x D)

**Weight:** 1.3 kg

**Outlet:** 2 x 3/4" BSP

**Lid:** 4" Ext Plain



UK MADE

12L 32068



### 60 LITRES

Made from WRAS approved polyethylene suitable for drinking water & other liquids.

**Colour:** White

**Size:** 350 x 250 x 800 mm (W x H x D)

**Weight:** 5.5 kg

**Outlet:** 3/4" BSP

**Lid:** 5" Int Plain



UK MADE

60L 32063



### 40 LITRES

WRAS approved polyethylene suitable for drinking water & other liquids.

**Colour:** White

**Size:** 370 x 170 x 750 mm (W x H x D)

**Weight:** 4 kg

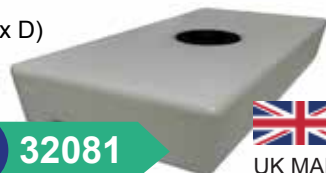
**Outlet:** 1 x 1/2" inlet & 3 x 3/4" outlet

**Lid:** 5" Int Plain



UK MADE

40L 32081



### 51 LITRES

WRAS approved polyethylene suitable for drinking water & other liquids.

**Colour:** White

**Size:** 400 x 120 x 1200 mm (W x H x D)

**Weight:** 8 kg

**Outlet:** 1/2" BSP

**Lid:** 5" Int Plain



UK MADE

51L 32080



### 70 LITRES

Fiamma stackable water tank with fittings. Suitable for fresh water.

**Colour:** Blue

**Size:** 700 x 240 x 470 mm (W x H x D)

**Weight:** 3.7 kg



MADE IN EUROPE

70L 30088



ACCESSORIES  
ADD  
ON

30085 Spare seal for red cap.

30087 Spare red cap & seal.





## 74 LITRES

Made from WRAS approved polyethylene suitable for drinking water & other liquids.

**Colour:** Blue

**Size:** 700 x 240 x 475 mm (W x H x D)

**Weight:** 5.2 kg

**Outlet:** not included

**Lid:** 5"

74L 30095



## + FITTING KIT 32099



UK MADE

## 75 LITRES

Made from WRAS approved polyethylene suitable for drinking water & other liquids.

**Colour:** White

**Size:** 450 x 305 x 600 mm (W x H x D)

**Weight:** 6 kg

**Outlet:**  $\frac{3}{4}$ " BSP

**Lid:** 8" Int Plain, 8" Int Vent

75L 32064



## 95 LITRES

Made from WRAS approved polyethylene suitable for drinking water & other liquids.

**Colour:** White

**Size:** 500 x 350 x 620 mm (W x H x D)

**Weight:** 8 kg

**Outlet:**  $\frac{3}{4}$ " BSP

**Lid:** 5" Int Plain

95L 32065



UK MADE



UK MADE





## 105 LITRES

Made from WRAS approved polyethylene suitable for drinking water & other liquids.

**Colour:** White

**Size:** 500 x 300 x 750 mm (W x H x D)

**Weight:** 9 kg

**Outlet:** 3/4" BSP

**Lid:** 5" Int Plain

105L 32066



UK MADE

## 125 LITRES

Made from WRAS approved polyethylene suitable for drinking water & other liquids.

**Colour:** White

**Size:** 460 x 290 x 1100 mm (W x H x D)

**Weight:** 10 kg

**Outlet:** 3/4" BSP

**Lid:** 8" Int Plain, 8" Int Vent

125L 32067



UK MADE



# UNDERSLUNG TANKS

## 63 LITRES

**Designed for:** RHD VW Crafter/MAN TGE after 2017. MWB/ FWD/RWD & 4WD variants.

Made from WRAS approved polyethylene suitable for drinking water & other liquids.

Complete with brass M8 moulded threaded inserts for easy mounting when used with the complete bracket kit. Three moulded brass vents and moulded inlet and outlet with sump.

**Colour:** Black

**Size:** 283 x 265 x 1332 mm (W x H x D)

**Weight:** 8 kg

**Outlet:** 2 x 3/4" BSP

**Lid:** 5" Int Plain



UK MADE

63L 32073

### FITTING KITS



**32102** Front Wheel Drive

**32103** Four Wheel Drive

## 69 LITRES

**Designed for:** VW T5 (03) - T6.1 (present) excludes 4motion.

Made from WRAS approved polyethylene suitable for drinking water & other liquids. Fits in front of spare wheel to vehicles listed below.

**Colour:** Black

**Size:** 960 x 225 x 1000 mm (W x H x D)

**Weight:** 9 kg

**Outlet:** 1/2" BSP

**Lid:** 5" Int Plain



UK MADE

32077 69L



**FITTING KIT: INCLUDED WITH TANK**



## 69 LITRE FITTED



 FITTING KIT: INCLUDED WITH TANK



UK MADE

## 90 LITRES

**Designed for:** VW Crafter / MAN TGE (after 2017) LWB / XLWB fits FWD, RWD & 4WD variants.

Made from WRAS approved polyethylene suitable for drinking water & other liquids.

**Colour:** Black

**Size:** 283 x 266 x 2012 mm (W x H x D)

**Weight:** 12 kg

**Outlet:** 1" BSP, 2 x 3/4" BSP

**Lid:** 5" Int Plain



UK MADE

**32079** 90L



### FITTING KITS



**32102** Rear Wheel Drive

**32103** Four Wheel Drive



## 94 LITRES

**Designed for:** VW Crafter / MAN TGE after 2017 MWB in RWD & 4WD variants.

Made from WRAS approved polyethylene suitable for drinking water & other liquids. Complete with brass M8 moulded threaded inserts for easy mounting when used with the complete bracket kit. Three moulded brass vents and moulded inlet and outlet with sump.

**Colour:** Black

**Size:** 283 x 355 x 1332 mm (W x H x D)

**Weight:** 9.5 kg

**Outlet:** 2 x  $\frac{3}{4}$ " BSP

**Lid:** 5" Int Plain



UK MADE

94L 32082



+ FITTING KIT  
32103

## 180 LITRES

**Designed for:** VW Crafter / MAN TGE after 2017 LWB/XLWB front wheel drive versions only.

Made from WRAS approved polyethylene for drinking water & other liquids. Will fit left and right hand drive vehicles.

**Colour:** Black

**Size:** 1260 x 230 x 1600 mm (W x H x D)

**Weight:** 23 kg

**Outlet:** 2 x  $\frac{1}{2}$ " BSP

**Lid:** 5" Int Plain

180L 32072

+ FITTING KIT  
32101



UK MADE



## 62 & 92 LITRES

**Designed for:** Ducato/Relay/Boxer 2006+.

Made from WRAS approved polyethylene suitable for drinking water & other liquids. Fiat Ducato/Citroen Relay/Peugeot Boxer 2006+ in L3 & L4 lengths Mounted to the cross members starting 1 complete bay behind the exhaust silencer. Can be fitted as a pair or individually. NOTE : 2 tanks the same size can not be fitted together. Tanks have moulded M8 brass inserts for mounting. Optional stainless steel fitting kit also available.

**Colour:** Black

**Size:**

62 litre : 570 x 760 x 180 mm (W x H x D)

92 litre : 890 x 760 x 180 mm (W x H x D)

**Weight:**

62 litre : 8.5 kg

92 litre : 12 kg

**Outlet:** 1 x 1 1/2" BSP + 1 x 1 1/4" BSP

**Lid:** 5" Internal



62 LITRES



UK MADE



92 LITRES



92L 32085



32084 62L



**FITTING KIT**  
**32106**



# WHEEL ARCH TANKS

## 24 LITRES

**Designed for:** Vans, pick-ups, campers, campervans & motorhomes.

Made from WRAS approved polyethylene suitable for drinking water & other liquids. This tank has 6 x M\* inserts moulded into the tank for easy mounting.

**Colour:** Black

**Size:** 150 x 500 x 750 mm (W x H x D)

**Weight:** 3 kg

**Outlet:** ½" BSP

**Lid:** 4" Int Plain



**+ FITTING KIT  
32071**



UK MADE

## 57 LITRES

**Designed for:** Vans & pick-ups

Made from WRAS approved polyethylene suitable for drinking water & other liquids. This tank has 11 x M8 inserts moulded into the tank for easy mounting. Requires venting.

**Colour:** Black

**Size:** 355 x 500 x 750 mm (W x H x D)

**Weight:** 6.5 kg

**Outlet:** ½" BSP

**Lid:** 5" Int Plain



**+ FITTING KIT  
32076**



UK MADE





## 100 LITRES

**Designed for:** Vans & pick-ups

Made from WRAS approved polyethylene suitable for drinking water & other liquids. This tank has 10 x M8 inserts moulded into the tank for easy mounting. Requires venting.

**Colour:** Black

**Size:** 260 x 680 x 1100 mm (W x H x D)

**Weight:** 11 kg

**Outlet:** 1 x ½" BSP

**Lid:** 5" Int Plain

100L 32078

**+ FITTING KIT  
32100**



UK MADE

## 68 LITRES

**Designed for:** VW T5 (03) - T6.1 (present) including 4motion vans.

Made from WRAS approved polyethylene suitable for drinking water & other liquids. Fits in place of the spare wheel.

**Colour:** Black

**Size:** 650 x 275 x 670 mm (W x H x D)

**Weight:** 7 kg

**Outlet:** ½" BSP

**Lid:** 5" Int Plain

68L 32074



UK MADE



# FIXINGS & CONNECTORS

## WATER FILLER

Locking filler cap complete with keys.

**Colour:** Black or White

**Size:** Ø 40 mm



Black  
**30128**



White  
**30140**

## WATER FILLER

Locking filler cap complete with keys.

**Colour:** Black or White

**Size:** Ø 40 mm



Black  
**30126**



White  
**30125**



## FRESH WATER SIGN

Single self-adhesive fresh water sign.

**Colour:** Blue/White

**Size:** 60 x 55 mm (W x H)

**71001**



## HOSE INLET

Robust plastic hose inlet socket.

**Colour:** Grey

**Size :** Ø 12 mm

**30174**



## HOSE OUTLET

Robust plastic hose outlet socket.

**Colour:** Grey

**Size :** Ø 19 mm

**30172**



## QJ KWIQ FIT OUTLET

**Colour:** Black



**32119** ½" Male : ⅜" Female

**32120** ½" Male : ¼" Female

**32121** 1" Male : ¾" Female

**32122** 1 ¼" Male : 1" Female

**32123** 1 ½" Male : 1 ¼" Female

**32124** 2" Male : 1 ½" Female

## HOSETAIL

1 ¼" BSPF x 40 mm

**Colour:** Black

**Size :** Ø 19 mm

**32130**





## TANK CONNECTOR

Includes:

- 1 x back nut (1/2")
- 1 x washer (1/2")
- 1 x vent hoesetail (1/2")

1/2" **30170**



## ELBOW HOSE TAIL

Includes:

- 1 x hoesetail 90° (1/2")
- 1 x washer (1/2")
- 1 x backnut (1/2")

1/2" **32097**



**32096** 3/4"

Includes:

- 1 x hoesetail 90° (3/4")
- 1 x backnut (3/4")
- 1 x washer (3/4")

## SUBMERSIBLE PUMP FITTING KIT

Includes:

- 1 x bulkhead 90° (1/2")
- 1 x back nut (1/2")
- 1 x cable gland
- 1 x washer (1/2")

1/2" **32098**



## WATER TANK PIPE FITTING KIT

Includes:

- 1 x 90° x 40 mm filler
- 2 x back nut (1/2")
- 1 x back nut (1 1/4")
- 2 x vent hoesetail (1/2")
- 1 x hoesetail (3/4")
- 2 x washer (1/2")
- 1 x seal (1 1/4")

**32099**





# GAUGES

## LED WATER LEVEL INDICATOR

With one push of the test button, you are able to monitor the water levels of one tank.

There is no need to wire in a 12-volt supply as the LED indicator gauge comes complete with its own battery, which is easily replaced when the need arises. For sender probe see item 20047.

**Size:** 65 x 65 x 16 mm (W x H x D)



Single LED  
**20045**



## LCD WATER LEVEL INDICATOR

These new technology gauges have a coloured LCD analogue display with LED backlighting for crystal clear viewing. Five levels are displayed. A 12-volt supply is required. These gauges only draw 50 mA so they can be left on without flattening your on-board battery. There is a power on/off switch to turn the gauge off when the caravan is not in use. See item 20047 for sender probe.

**Size:** 115 x 108 x 20 mm (W x H x D)



Single LCD  
**20046**



**Grassroutes**  
LEISURE LTD  
*exclusive*

## SENDER PROBE

This easy-to-fit tank sender probe only requires one 22 mm (7/8") hole in the side of the tank and suits tanks from 100 mm to 280 mm (4" to 11") deep. Length: 5 m.

The sender probe is sealed by a special grommet which is compressed in the hole when the nut is tightened and measures the water level by contact with the five sensors along the arm. It has no moving parts. For use with 20045 & 20046.



**20047**



## PROGRAMMABLE WATER TANK GAUGE



Programmable LED/LCD water tank indicator. Comes preprogrammed to suit standard sender and 180/200 mm deep tanks. LED is battery operated. LCD is 12V operated.



### LED INDICATOR

Size : 65 x 65 x 16 mm

Single LED  
**20073**

Double LED  
**20079**



### LCD INDICATOR

Size : 115 x 108 x 20 mm

Single LCD  
**20105**

Double LCD  
**20106**



## PROGRAMMABLE SENDER PROBE

Two lengths available.

For use in fresh and grey water tanks. Self sealing grommet. No messy, toxic glues. For use with 20073, 20079, 20105 & 20106.

**20088** up to 280 mm

**20089** up to 700 mm



## CABLE

Durable, easy 'plug & play' installation.

Available in 3 lengths. waterproof with IP67 rating.

For use with 20073, 20079, 20105 & 20106.

**20066** 2.5 metres

**20067** 5.0 metres

**20068** 7.5 metres





*Suppliers to the leisure & leisure vehicle industry*

15 Bennetts Field  
Wincanton  
Somerset  
BA9 9DT

01963 824792

[www.grassroutesleisure.co.uk](http://www.grassroutesleisure.co.uk)