

fixtures & fittings | kitchens | washrooms | LPG | heating | electrical | water



# Grassroutes LEISURE LTD



**TRADE CATALOGUE**

**01963 824792**

[www.grassroutesleisure.co.uk](http://www.grassroutesleisure.co.uk)



## INTERNAL FIXTURES & FITTING

3 - 31

About Vöhringer Furniture Board  
 Vöhringer Ply  
 Router Tools  
 Edging & Trim  
 Table Hardware  
 Furniture Hardware  
 Locks & Catches  
 Tambour Doors

Sleeping  
 Other Fittings  
 Lining Carpet  
 Adhesives  
 Curtains  
 Seat Swivels  
 Tack Locker Fittings  
 Safety Devices

## KITCHEN APPLIANCES

32 - 50

Sinks  
 Hobs  
 Induction Hobs  
 Combination Units  
 Ovens & Grills

Kitchen Taps  
 Cool Boxes  
 Refrigeration  
 Spare Parts  
 Kitchen Storage

## LPG GAS

51 - 55

Pipework  
 Regulators & Connectors

Ventilation  
 Gas Boxes & Tanks

## HEATING SYSTEMS

56 - 59

Water Heaters

Hot Air Heaters

## ELECTRICAL

60 - 76

Control Panels & Chargers  
 Hook up Connectors  
 Cable, Outlets & Sockets  
 Battery Accessories  
 Fuse Holders  
 Switches & Sockets

Panels  
 USB Devices  
 Lighting  
 Mobile Internet  
 Audio  
 Solar

## WATER

77 - 85

Water Fittings  
 Water Pumps  
 Jerry Cans

Water Tanks  
 Water Gauges

## WASHROOM

86 - 91

Portable Toilets  
 Fixed Toilets  
 Wash Basins & Vanity Units

Shower Trays & Wastes  
 Washroom Taps  
 Spares & Accessories

## EXTERNAL FIXTURES & FITTINGS

92 - 105

Roof Vents  
 Roof Vent Spares  
 Steps  
 TV Accessories

Air Conditioning  
 Bike Racks  
 Annexes  
 Awnings



## *What is Vöhringer ply?*

Taking its name from its manufacturer Vöhringer (V-Group), Vöhringer ply is a popular and versatile lightweight plywood with a hard veneered finish that is made in Germany. It has been traditionally used for interior furniture in motorhomes, caravans, campervans and horseboxes since 1971. Vöhringer ply is available in two thickness's: 15 mm and 3mm. The 15 mm board is supplied with the same colour veneer both sides. The 3 mm board is supplied with veneer on one side only. The board is approximately 2420 x 1215 mm. It weighs approx. 19 kg per board for the 15 mm board.

## *Is it environmentally friendly?*

Vöhringer takes pride in being environmentally friendly and only uses sustainable products made from renewable materials from organically cultivated forests where forest depletion is avoided. Their production methods are performed with environmentally friendly and renewable raw materials. All of Vöhringer's partners are being certified to the Forest Stewardship Council's standards of environmental quality.

## *Why use Vöhringer ply?*

Vöhringer ply is a proven product and does not de-laminate over time. The manufacturing process has been developed over 40 years and uses PUR water resistant hot melt glue and the latest laminating machinery and highly skilled staff. Only Ilomba/Poplar plywood from Italy and Spain with a density of just 470 kg/m<sup>3</sup> is used, making Vöhringer ply easy to cut. Using Vöhringer ply for your leisure vehicle builds can only enhance and add value to these builds.



## *The main features of Vöhringer ply*

- Available from stock
- Lightweight (only 19 kg for 15 mm board)
- Durable and long lasting
- Proven manufacturing process (in excess of 40 years)
- Easy to cut (less wastage)
- Enhances and adds value to any build
- 15 mm veneered both sides
- 3 mm veneered one side
- Approximate size: 2420 x 1215 mm
- Choice of 31 colours
- Next day delivery available

## *How quickly can I get Vöhringer Ply?*

We hold large stocks of Vöhringer ply and can offer a choice of 29 colours (as detailed in this catalogue). If you would like a colour that we do not stock, please do not hesitate to contact us.

## *Delivery Time-scales*

All Vöhringer orders are dispatched within 24 hours and can be sent on a next day or economy (2-3 day) service.

## *Bespoke projects*

As the wholesaler for Vöhringer ply in the UK, we are able to offer bespoke orders, including curved Vöhringer doors. Contact our customer service team for more information.

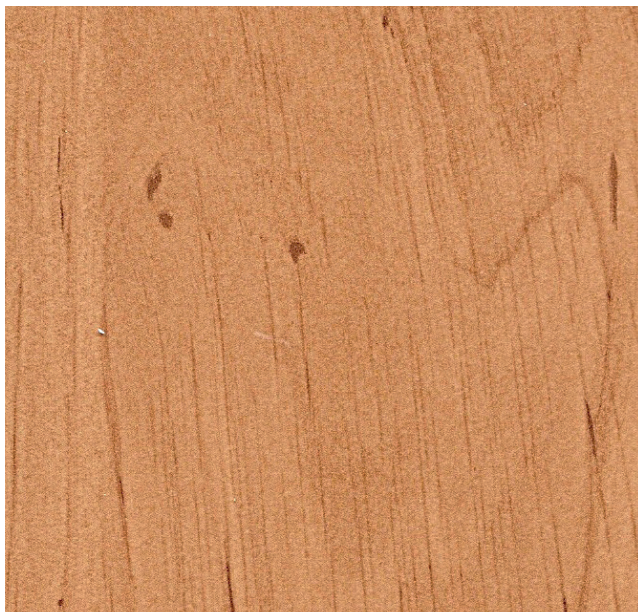
## *Sample packs*

As colours may differ from the colour charts, we can supply sample packs or individual samples for exact colour match.

Please contact our customer services team on 01963 824792



*Samples available*



**AMERICAN CHERRY**

**99005** 15 mm veneered both sides

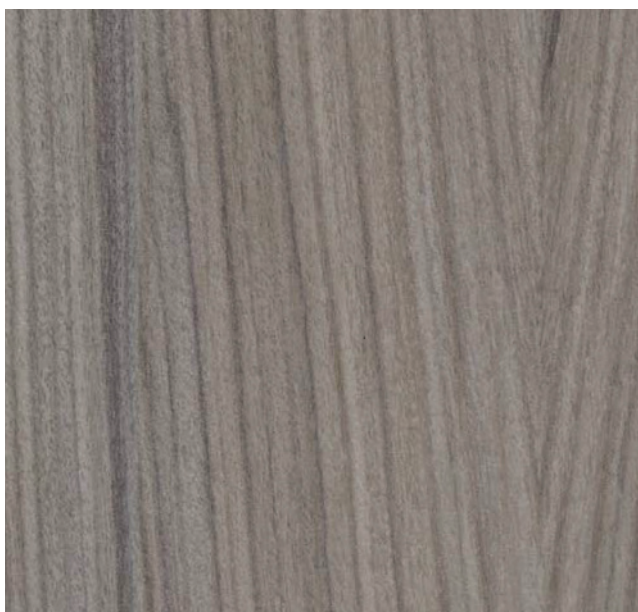
**99205** 3 mm veneered on one side



**SAND ZEBRANO**

**99021** 15 mm veneered both sides

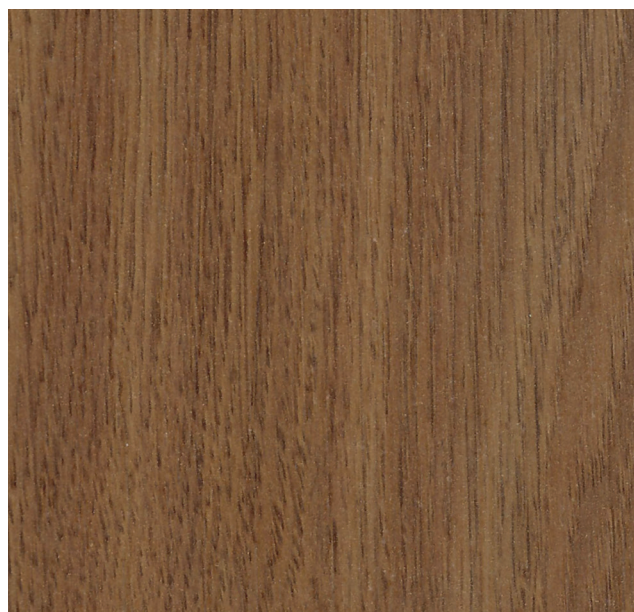
**99221** 3 mm veneered on one side



**DRIFTWOOD**

**99019** 15 mm veneered both sides

**99219** 3 mm veneered on one side



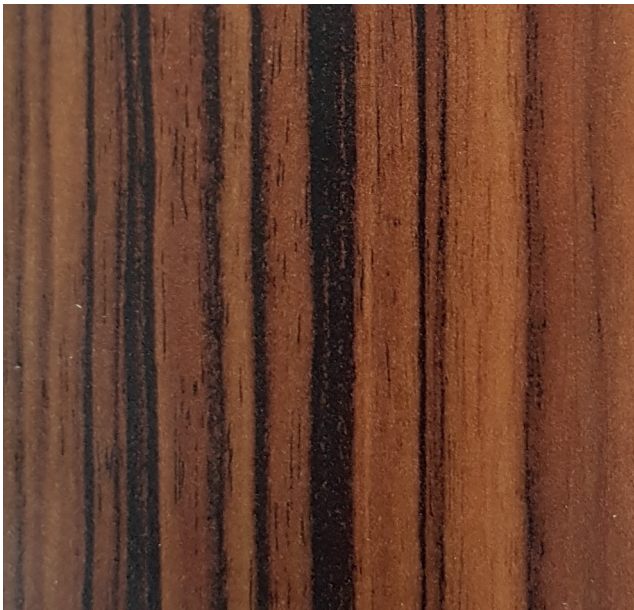
**KENDAL OAK**

**99042** 15 mm veneered both sides

**99242** 3 mm veneered on one side

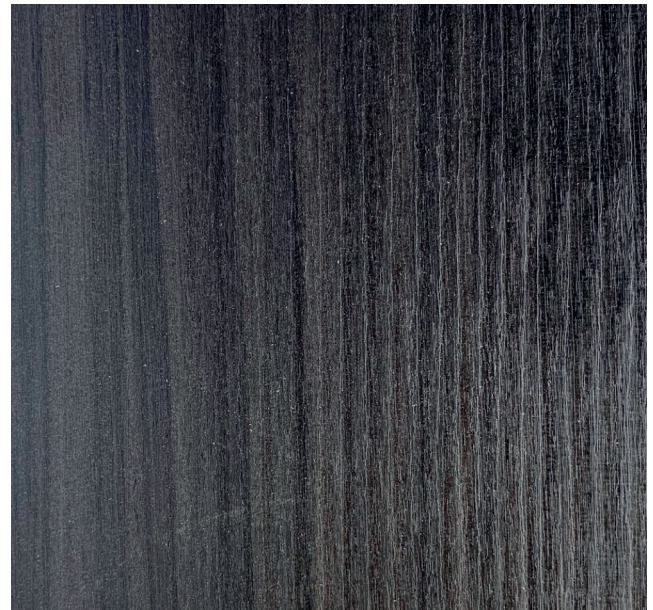


*Samples available*



**MAKASSAR**

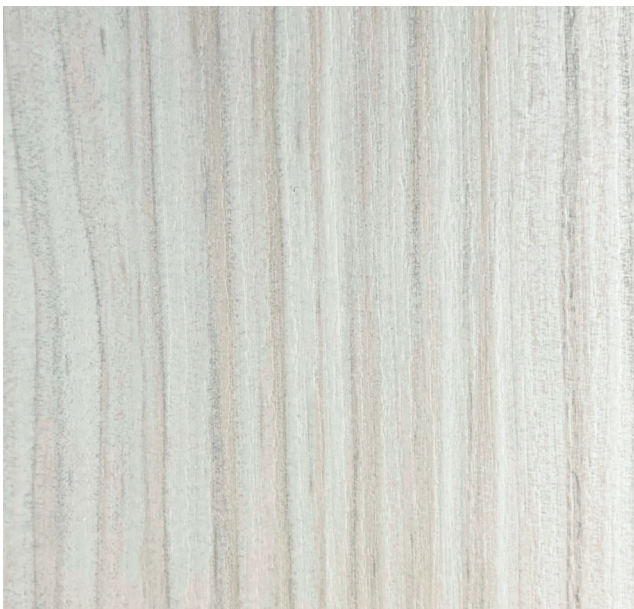
**99030** 15 mm veneered both sides



**HAVANA (HACIENDA) BLACK**

**99038** 15 mm veneered both sides

**99238** 3 mm veneered on one side



**HAVANA (HACIENDA) WHITE**

**99037** 15 mm veneered both sides

**99237** 3 mm veneered on one side



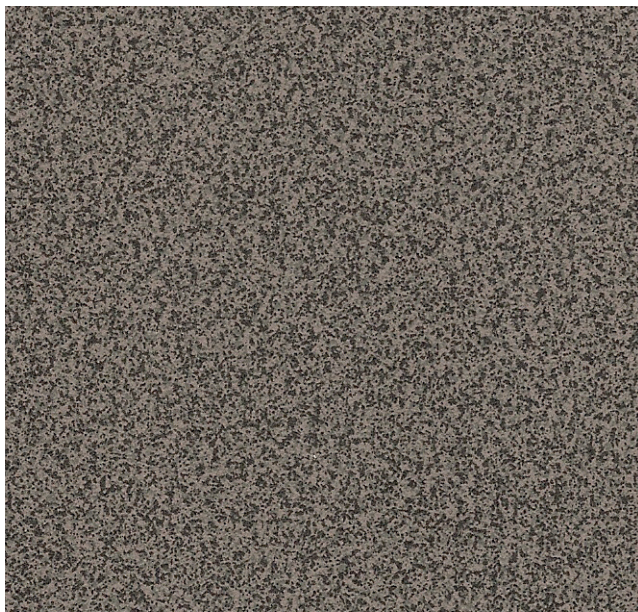
**BARDOLINO OAK**

**99041** 15 mm veneered both sides

**99241** 3 mm veneered on one side



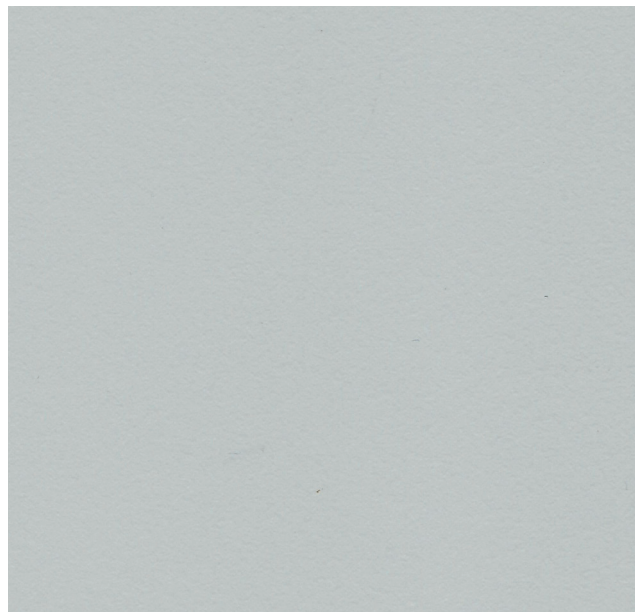
*Samples available*



**PUNTINELLA**

**99004** 15 mm veneered both sides

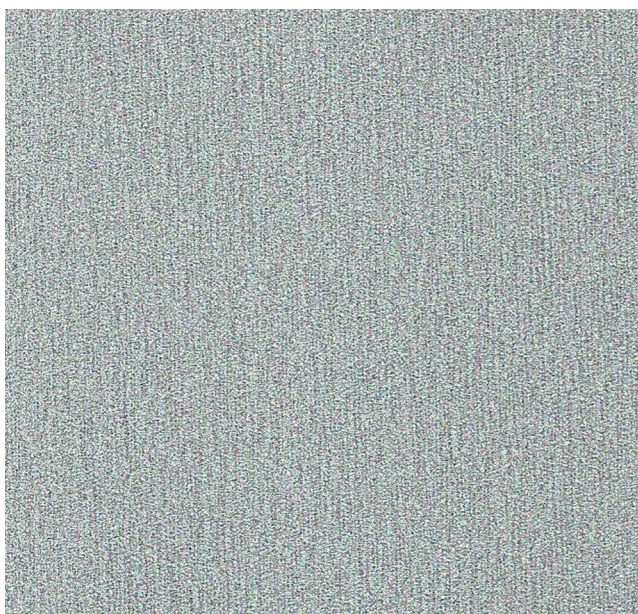
**99204** 3 mm veneered on one side



**HELLGRAU (LIGHT GREY)**

**99032** 15 mm veneered both sides

**99232** 3 mm veneered on one side



**TITANIUM**

**99007** 15 mm veneered both sides

**99207** 3 mm veneered on one side



**GRAFFITI GREY**

**99003** 15 mm veneered both sides

**99203** 3 mm veneered on one side



*Samples available*



**MATT BLACK**

**99018** 15 mm veneered both sides

**99218** 3 mm veneered on one side



**CARBON**

**99008** 15 mm veneered both sides

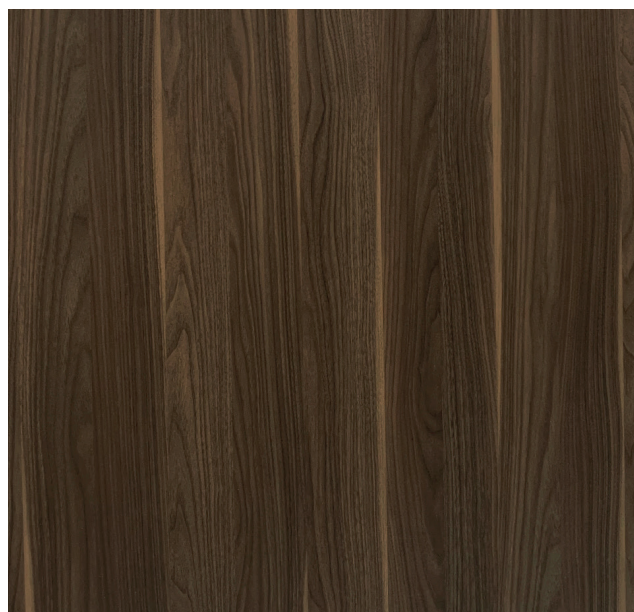
**99208** 3 mm veneered on one side



**GLOSS CARBON**

**99039** 15 mm veneered both sides

**99239** 3 mm veneered on one side



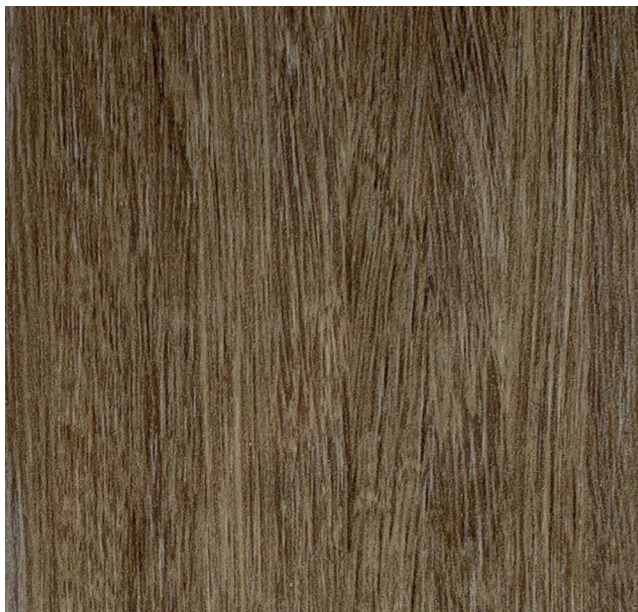
**GLOSS WALNUT**

**99035** 15 mm veneered both sides

**99235** 3 mm veneered on one side



*Samples available*



**GLOSS BARRIQUE OAK**

**99036** 15 mm veneered both sides

**99236** 3 mm veneered on one side



**GLOSS BLACK**

**99017** 15 mm veneered both sides

**99217** 3 mm veneered on one side



**PEARL GREY**

**99040** 15 mm veneered both sides

**99240** 3 mm veneered on one side



**GLOSS WHITE**

**99020** 15 mm veneered both sides

**99220** 3 mm veneered on one side



*Samples available*



**PISTACHIO**

**99033** 15 mm veneered both sides

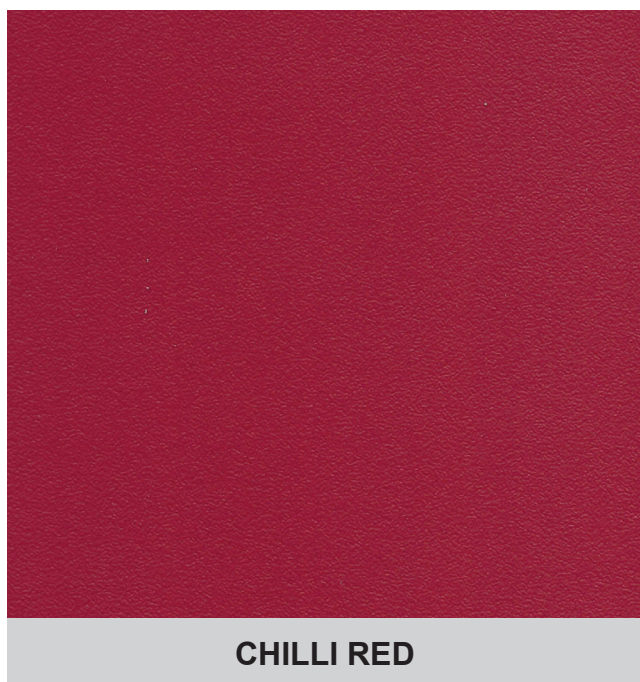
**99233** 3 mm veneered on one side



**ONYX GREY**

**99066** 15 mm veneered both sides

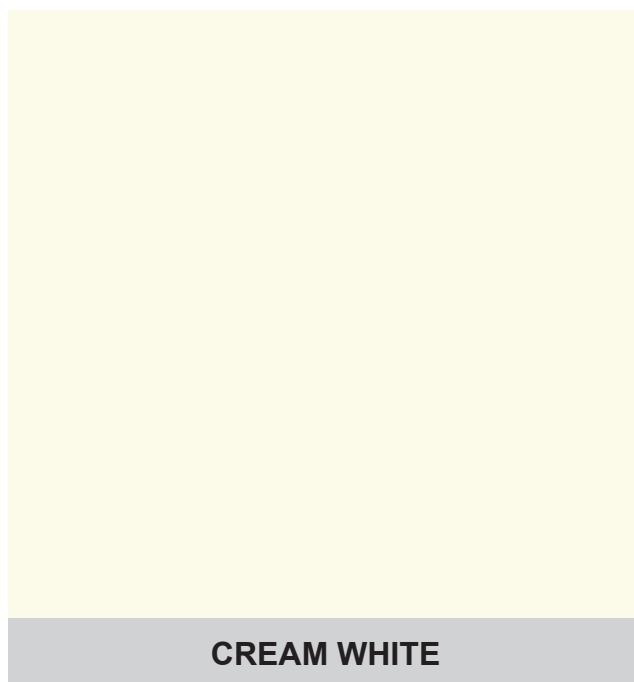
**99266** 3 mm veneered on one side



**CHILLI RED**

**99061** 15 mm veneered both sides

**99261** 3 mm veneered on one side



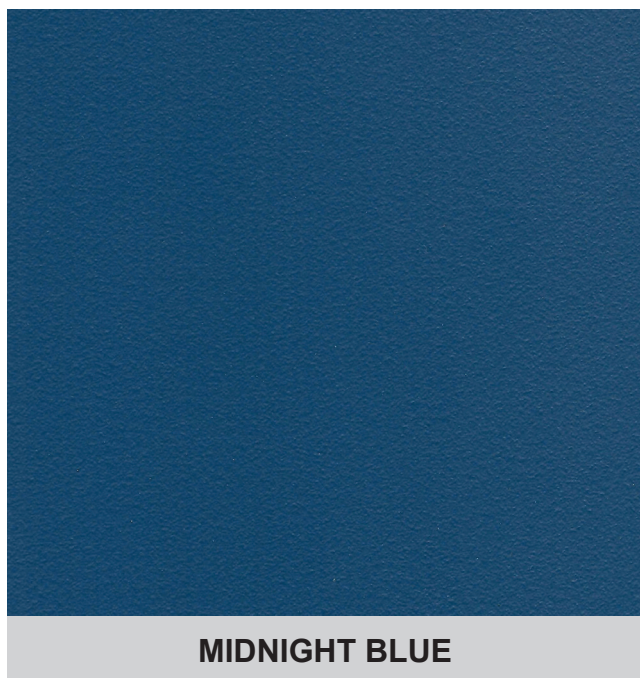
**CREAM WHITE**

**99060** 15 mm veneered both sides

**99260** 3 mm veneered on one side

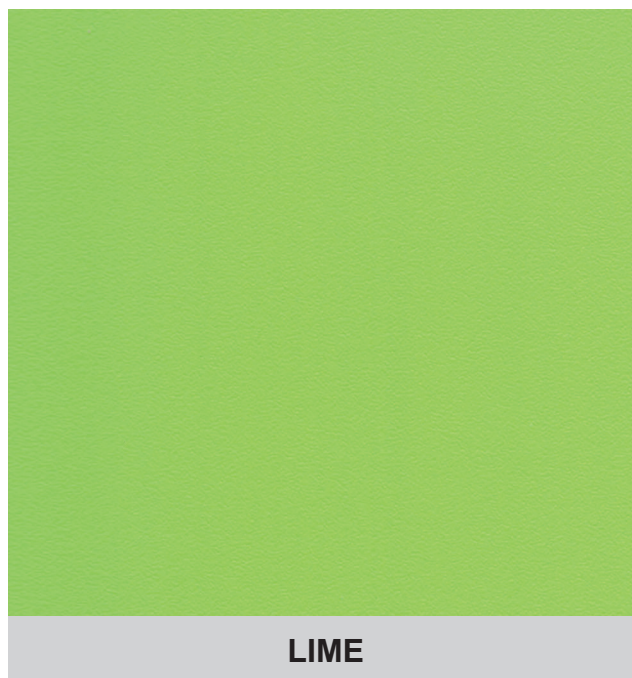


*Samples available*



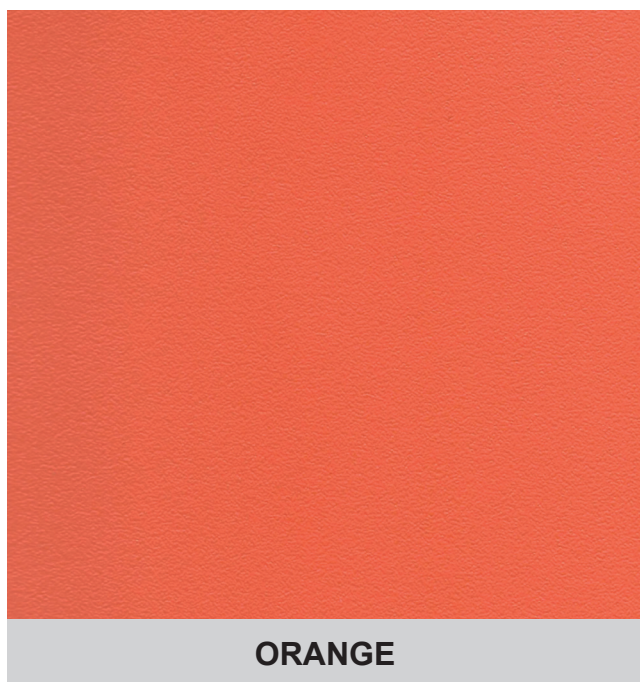
**99062** 15 mm veneered both sides

**99262** 3 mm veneered on one side



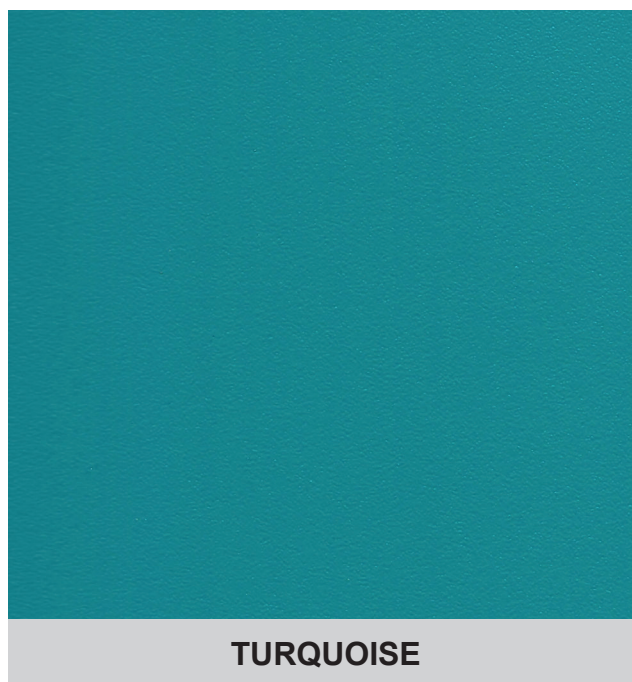
**99063** 15 mm veneered both sides

**99263** 3 mm veneered on one side



**99064** 15 mm veneered both sides

**99264** 3 mm veneered on one side

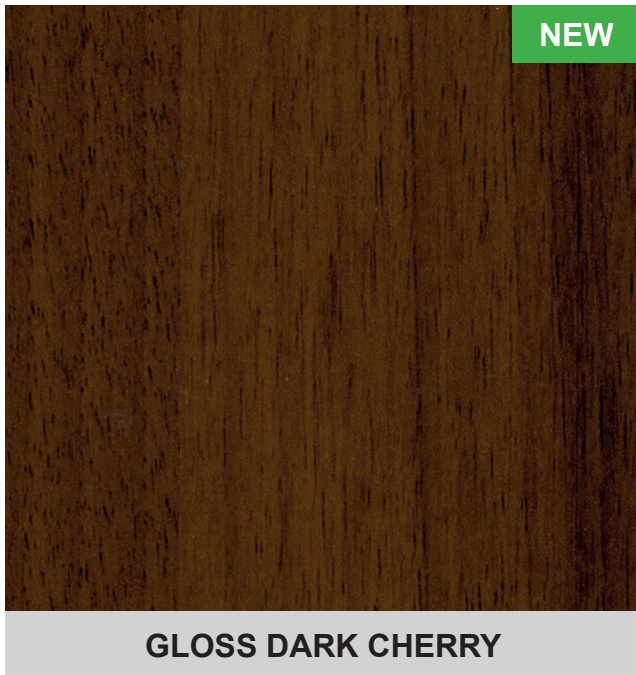


**99065** 15 mm veneered both sides

**99265** 3 mm veneered on one side



*Samples available*

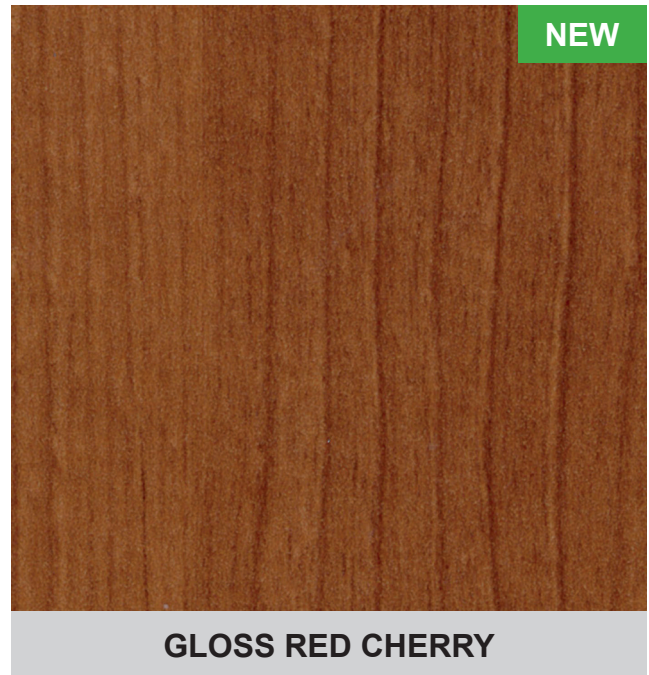


**GLOSS DARK CHERRY**

- 99067** 15 mm veneered both sides

---

- 99267** 3 mm veneered on one side



**GLOSS RED CHERRY**

- 99068** 15 mm veneered both sides

---

- 99268** 3 mm veneered on one side



**GLOSS WHITE/GLOSS WALNUT**

15 mm veneered both sides. Bi-finish special Vöhringer board. One side is Gloss Walnut and the other is Gloss White, making it ideal for kitchen cabinets and wash room lining

- 99050** 15 mm veneered both sides

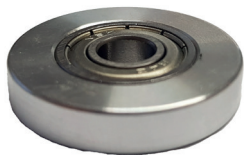


**GARNIER PLY**

The base lightweight ply used to manufacture Vöhringer. Approximate size: 2420 x 1215 mm. Thickness: 15 mm

- 99903** 15 mm without veneer





### TREND BEARING

Trend B260 bearing 26 mm Ø ¼" bore. Bearings are shielded to prevent penetration of dust and grease packed for life. To suit Trend router cutters.

**60025**



### TREND ARBOR

Trend 33/60X1/4 arbor 33/60 for ¼" bore tools. Standard duty arbor with ¼" spindle and spacers. Enables mounting of ¼" bore slotters with and without bearings in a variety of positions.

**60024**



### TREND SLOTTER

Trend SL/E slotter 2.0 mm kerf ¼" bore. Requires an arbor (**60024**) and bearing (**60025**). All slotters are precision made in TCT grade for long life when cutting the most abrasive materials. For Estorfer trim.

**60023**



### TREND CUTTER

Trend C004X1/4TC two flute cutter 5 mm Ø. Suitable for a wide range of applications, such as engraving, grooving, rebating and shallow mortising.

**60021**



### QUICK RATCHET CLAMP

Quick ratchet clamp to 300 mm.

**42002**



Estorfer edging and trims are flexible, robust and durable. We stock a large choice of trims, including single lipped T-trim, locker door trim, table top trim, beading and corner profiles. All available in a choice of colours. Sold by the roll with the exception of the corner profile, which is sold in 2.2 m lengths.



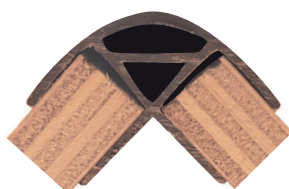
**LOCKER DOOR TRIM**



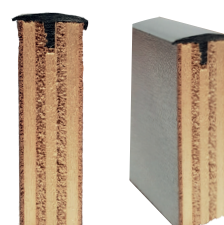
**TABLE TOP TRIM**



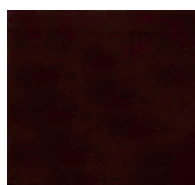
**BEADING**



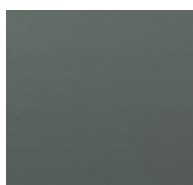
**CORNER PROFILE**



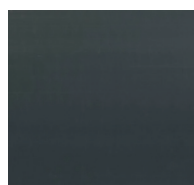
**SINGLE LIPPED T-TRIM**



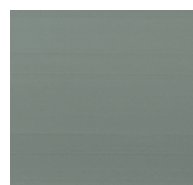
**DARK BROWN**



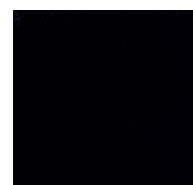
**MID GREY**



**DARK GREY**



**SILVER**



**BLACK**

	Locker Door Trim 40 m roll	Table Top Trim 50 m roll	Single Lipped T-Trim 100 m roll	Beading 100 m roll	Corner Profile 2.2 m roll
Dark Grey	60012	60007	60005	60000DG	60009
Mid Grey	60011	60002	60001	N/A	60003
Silver	60033	60032	60034	60000S	N/A
Dark Brown	60013	60008	60006	N/A	N/A
Black	60105	60106	60104	60000BL	60107

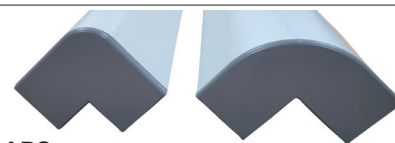
## ALUMINIUM CORNER PROFILES

For 15 mm board.  
2.05 m Length



**60110** 24.3 mm radius

**60119** 10 mm radius



## END CAPS

Plastic end caps designed to fit on the end of the aluminium corner profiles. Pack of 10.

**60510** End cap for 60110

**60519** End cap for 60119

**NEW**





### FIAMMA TABLE LEG

Fiamma Tube Pro 700 mm includes 2 x joint black plastic caps.

To be used with items **30067** Fiamma recessed connector and **30068** Fiamma Conic Connector.

**30065**



### TABLE LEG CLIP

Black powder coated metal clip for holding table legs securely when table not in use.

**30061**



### FOLDING TRIPOD

Strong black plastic Fiamma tripod designed for use with **30065** Fiamma Tube Pro table leg, enabling the table to be used outside of the vehicle.

**30070**



### FIAMMA RECESSED CAP

Fiamma recessed cap for use with **30067** Fiamma recessed connector. For use when the table is stored away. The cap stops dust and dirt from getting into the recess.

**30207**



### RECESSED TABLE CONNECTOR

Fiamma recessed connector for use with **30065** Fiamma Tube Pro and **30068** Fiamma Conic Connector. This recessed connector should be fitted to the floor of the vehicle. Includes fitting screws. Colour: Matt Silver.

**30067**



### CONIC TABLE CONNECTOR

Fiamma Conic connector for use with **30065** Fiamma Tube Pro and **30067** Fiamma recessed connector. This Conic Connector should be fitted to the bottom of the table top. Includes fitting screws. Colour: Matt Silver.

**30068**



**NEW**

### CRANKED TABLE LEG

Ribbed aluminium cranked table leg kit. Comes with 1 x table leg and 2 x clamps. Leg Height: 710 mm. Leg height with bracket: 715 mm. Leg arm length: 400-405 mm. Bracket size: 130 x 95 x 45 mm (L x W x H).

**30064**



UK MADE

**NEW**

Extra clamp for cranked table leg part 30064.

**30060**

### WARDROBE RAIL & CLIPS

**30062** 1 m rail

**30063** Clips



**NEW**

### TELESCOPIC TABLE LEG

Folding telescopic aluminium table leg. Leg thickness: 40 x 30 mm. Closed Height : 543 mm. Max. Open Height : 750 mm.

**60077** Matt Silver

**60076** Black



UK MADE



### ROTATING TABLE LEG

Galvanised table leg. Rotational movement of both leg and table support.

Height : 730 mm

**60060**

### BUDGET TABLE LEG SET

Budget table leg set includes:  
Base connector  
Table top connector  
Table leg (700 mm length)  
Supplied packed.



**90065S**



**TELESCOPIC FOLDING TABLE LEG**

Anodised aluminium telescopic folding table leg. Colour: Silver finish. Can be extended from 550-750 mm high.

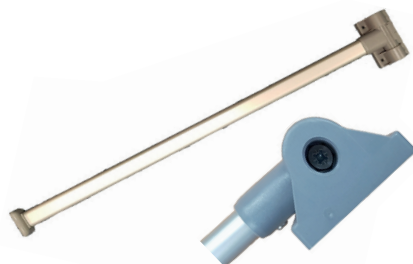
60079



**COMET FOLDING TABLE LEG**

Folding table leg. Height: 720 mm. Leg width: approx. 30 mm. Colour: Silver finish.

60063



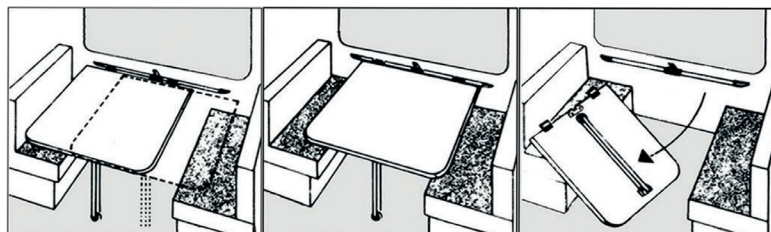
**NEW**

**DOUBLE COMET FOLDING TABLE LEG**

Folding table leg with oval anodized aluminium, plastic hinges and attachment plate in plastic.

Height: 720 mm.

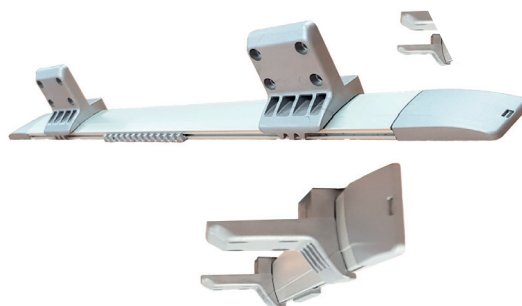
60069



**PIN SLIDING TABLE RAIL SYSTEM**

Sliding table rail system for demountable table. Stainless steel rail length: 900 mm – can be cut to size. Colour: Matt Silver with grey plastic ends/fittings. For use with folding table legs.

60030



**MITO WALL MOUNTED TABLE RAIL**

Mito wall mounted sliding table rail. Sliding connection kit for tables in anodized aluminium and plastic components. Length: 1000 mm including cap ends.

60096



**PIN SLIDING TABLE RAIL SYSTEM & COMET TABLE LEG SET**

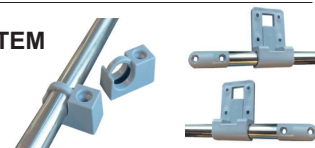
Make savings when buying this set. Set comprises of 1 x 60063 folding table leg and 1 x 60030 sliding table rail system with premium stainless steel rail.

60030S

**BUDGET TABLE RAIL (SLIDING) SYSTEM**

Sliding table rail with 950 mm bar

60082



**BUDGET TABLE RAIL SYSTEM & TABLE LEG SET**

Includes 1 x 60082 and 1 x 60063

60082S



**TABLE TOP STORAGE SOLUTION**

Bracket set for storing table tops when not in use or in transit.

60067





**ACCURIDE RUNNER**

Heavy duty, general purpose runner (pair). 90 kg carrying capacity. Hold-in feature holds the closed drawer in. 32 mm drilling pattern. Bright zinc plated steel. Sold in pairs.

**90015** 500 mm closed/524 mm open

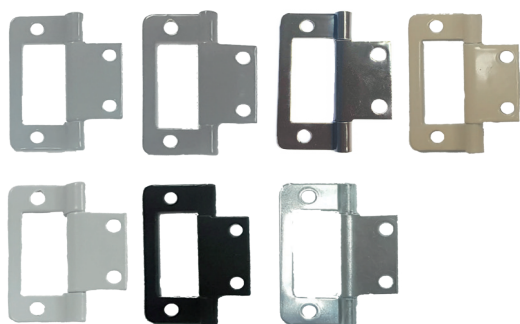
**90010** 700 mm closed/733 mm open



**DRAWER RUNNER**

Base mounting. Single extension. Roller action – both profiles have one plastic roller. 30 kg capacity. Sold in pairs. 32 mm drilling pattern. Epoxy coat steel. Colour: Cream/White finish.

**90004**



**BUTT HINGE : 50 MM**

Zinc plated steel butt hinge with fixed pin. Sold individually. For inset doors. Size: 50 x 23 mm. Available in six powder coated colours or unpainted.

**60004** Mid Grey

**60014** Dark Grey

**60015** Dark Brown

**60019** Beige

**60065** Silver

**60066** Gloss Black

**60062** Unpainted

**CRANKED HINGE**

Electro brass finished flush fitting hinge. Suitable for door thickness 15-19 mm. Fixed pin. Non mortise for medium duty applications. Size: 50 mm. Sold individually. Excludes screws.



**60057**



**CRANKED HINGE REIMO TYPE**

Powder coated cranked hinge.

Sold in pairs (1 x RH; 1 x LH)  
Size: 50 x 40 mm.



**60016** Mid Grey

**60017** Dark Grey

**60018** Dark Brown



**BAR HANDLE**

Stainless steel effect. Ideal as vertical cupboard and kitchen door handles. Length: 168 mm. Hole Spacing: 128 mm.

**90080**



**NEW**

**TAVISTOCK BOW HANDLE**

Aluminium polish chrome effect. Length: 174 mm. Hole Spacing: 160 mm.

**90082**



**NEW**

**HARRINGTON D PULL HANDLE**

Zinc alloy stainless steel effect. Length: 179 mm. Hole Spacing: 160 mm.

**90081**





**GAS SPRUNG DOOR STRUT**

Gas sprung door strut and bracket to aid opening and closing of locker doors. Colour: Silver. 227 x 15 mm (L x W)

60085



**CUPBOARD DOOR STAY**

Metal automatic opening spring loaded cupboard door stay. Length: 244 mm.

90051



**CUPBOARD DOOR STAY**

Metal cupboard door stay. Spring loaded. Opening Size : 140 mm Closed Size 100 mm. W4 packed

60070



**CUPBOARD DOOR STAY**

Left or right hand door stay with white plastic housing. Length: 200 mm.

90052RH Right hand stay

90052LH Left hand stay



**CORNER BRACE**

38 mm zinc plated corner brace. Pack of 10.

42003



**DOOR STOPS**

Self-adhesive cupboard door stops. Pack of 12. W4 Packed.

60078



**PLASTIC STRUT COVER**

Size: 150 mm wide x 110 mm high. 35 mm internal depth; 55 mm external lip depth.

60183 Mid Grey

60184 Black



**CRANKED FLUSH HINGE**

Steel zinc plated flush hinge with fixed pin. Non mortise for medium duty applications. Fixings not included. Sold Individually. Size: 50 x 42 mm.

90007



**STEEL BENCH SEAT HINGE**

Spring-loaded hinge for 95° opening with built-in stop. Closed length: 191 mm. Depth: 50 mm. Excludes fittings. Sold in pairs. Suitable for seat tops weighing up to 12 kg.

90006-12



**MODESTY BLOCK**

One piece robust plastic modesty knock down block. Available in three colours. Pack of 50.

60074W White

60074B Beige

60074BL Black

**CORNER CONNECTOR**



Robust plastic two piece corner connector available in six colours. Size: 44 mm. Pack of 50.

60072W White

60072B Beige

60072D Dark Brown

60072LG Light Grey

60072DG Dark Grey

60072BL Black



**P CLIPS**

White plastic P clips available in five sizes. Pack of 10.

30272-6mm

30272-16mm

30272-19mm

30272-25mm

30272-31mm



### MINI LOCKING PUSH BUTTON DOOR KNOB SETS

Locking push button door knob set with either Brown or Grey lock. Ideal for cabinets. Size : 15 mm.

The set consists of:- lock, rosette, push button and striking plate.

#### Round Rosette

- 90001** Nickel with Brown Lock
- 90001N** Nickel with Grey Lock
- 90001CB** Chrome with Brown Lock
- 90001CS** Chrome with Grey Lock
- 90001PK** Nickel with Brown Lock. Box of 10
- 90001NPK** Nickel with Grey Lock. Box of 10



### LOCKING PUSH BUTTON DOOR KNOB SETS

Locking push button door knob set with either Brown or Grey lock. Ideal for cabinets. Size : 22 mm.

The set consists of:- lock, rosette, push button and striking plate.

#### Round Rosette

- 90003** Nickel Rosette with Brown Lock
- 90003N** Nickel Rosette with Grey Lock



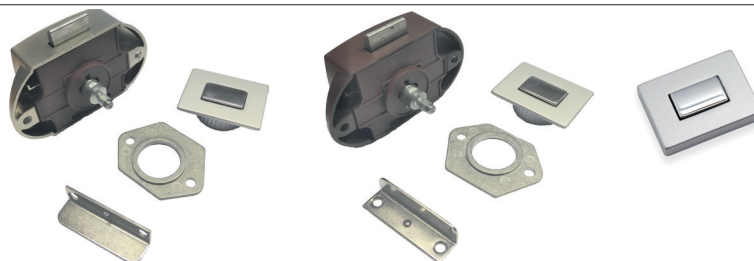
#### Square Rosette

- 90026** Square Rosette with Brown Lock
- 90026N** Square Rosette with Grey Lock



### Baldacci Rectangular Rosette & Button

- 90020** Rectangular Rosette with Brown Lock
- 90020N** Rectangular Rosette with Grey Lock

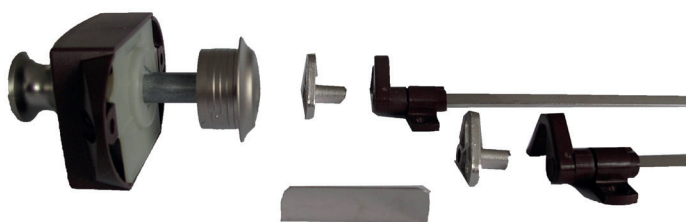


### PUSH BUTTON TOILET DOOR LOCK KIT

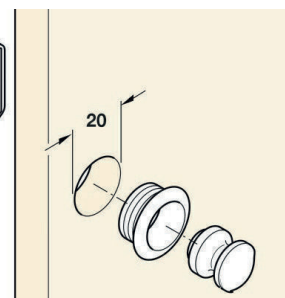
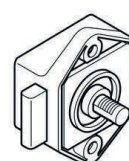
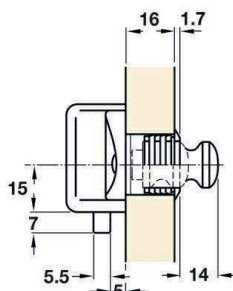
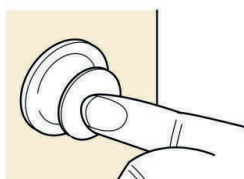
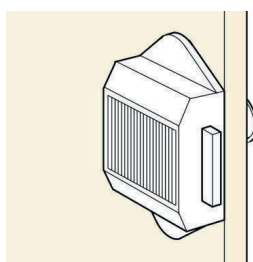
This lock is ideal for toilets or other openings that need to be opened from both sides.

The kit comprises of:

- 1 x double sided brown lock
- 2 x 1 metre Ø : 0.6 mm profile rods
- 2 x locking bolts; 1 x round nickel rosette 22 mm
- 2 x nickel push buttons; 1 x striking plate



#### 90025







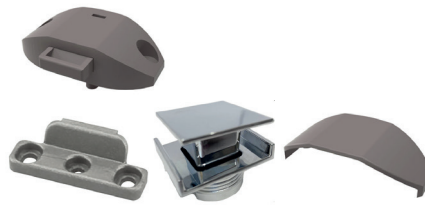
**EVOLUTION ROUND PUSH BUTTON LOCK**

Evolution Round Rosette/Lock Complete consists of:-

1 x Grey Lock; 1 x Grey Lock cover; 1 x Frame for 15 mm Board

1 x Plastic Striking Plate; 1 x Round Push Button Rosette

**90035**



**EVOLUTION SQUARE PUSH BUTTON LOCK**

Evolution Square Rosette/Lock Complete consists of:-

1 x Grey Lock; 1 x Grey Lock cover; 1 x Frame for 15 mm Board

1 x Plastic Striking Plate; 1 x Square Push Button Rosette

**90036**



**EVOLUTION RECTANGULAR PUSH BUTTON LOCK**

Evolution Rectangular Rosette/Lock Complete consists of:-

1 x Grey Lock; 1 x Grey Lock cover; 1 x Frame for 15 mm Board

1 x Plastic Striking Plate; 1 x Rectangular Push Button Rosette

**90037**

**PRINCESS CATCH**

This durable plastic door catch is ideal for unit doors in the motorhome, horsebox, caravan or camper.

Tolerance of panel thickness 12 mm - 18 mm. Dimensions : Lock Front: 63 x 35 mm

Rear Lock Housing : 62 x 39 mm

Use 3 mm Plas-Tech screw, length determined by board thickness (Screws not supplied)

- 90040** Gun Metal
- 90041** Silver
- 90042** Black
- 90043** Mid Grey
- 90044** Satin

**NEW**



**Backing Plate**



**90044**



**90040**



**90041**



**90042**



**90043**

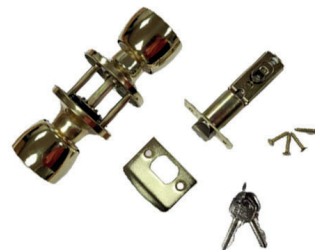


**CASE CLIP 40 MM**

Nickel plated 40 mm case clip. Pack of 5.

**42016**

**NEW**



**DOOR LOCK: BRASS**

Key operated from outside. SNIB from inside. Door thickness: 35-45 mm. Fittings supplied.

**90083**

**NEW**



**DOOR LOCK: SATIN CHROME**

Key operated from outside. SNIB from inside. Door thickness: 35-45 mm. Fittings supplied.

**90084**

**NEW**



**METAL TURN-BUCKLE**

Black. Hole centre: 35 mm. Approx. size: 15 x 60 mm (H x W).W4 Packed.

90053



**VENETA DOOR RETAINER**

White veneta door retainer. Approx. Size: 40 x 57 mm. W4 Packed.

90056



**DOUBLE ROLLER CATCH**

Plastic. Pack of two. Colour: Brown. Size: 30 x 30 mm. W4 Packed.

90057



**INTERNAL DOOR CATCH**

Plastic door catch ideal for internal cupboard doors. Black. Size :100 x 31 mm (W x D).

60152



**THUMB CATCH**

Thumb Catch 56 x 40 mm. Chrome. Pack of 2.

42015

NEW



**BALES CATCH**

19 mm Bales Catch. Brass finish. Pack of 5.

42018

NEW



**DOUBLE ROLLER CATCH**

Steel roller catch including screws. Approx. Size: 30 x 30 mm. W4 Packed.

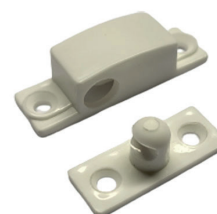
90061



**QUICK RELEASE RETAINER**

Black plastic quick release door retainer. Approx. Size: 57 x 120 mm. W4 Packed.

90054



**PEGALINE CATCH**

Off white plastic pegaline catch. Approx. Size: 12 x 45 mm. W4 Packed.Packed.

90060

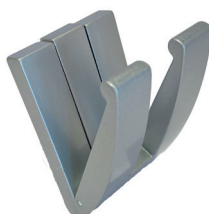


**MAGNETIC CATCH**

Brown magnetic catch 45 mm. Retains 6 kg. Pack of 5

42019

NEW



**DOUBLE COAT HOOK**

Metal coat hook. Approx. Size: 45 x 74 mm. Colour: Matt Silver.

90075



**VIVA DOOR RETAINER**

White plastic door retainer. Size : 75 x 72 mm. W4 Packed.

90059

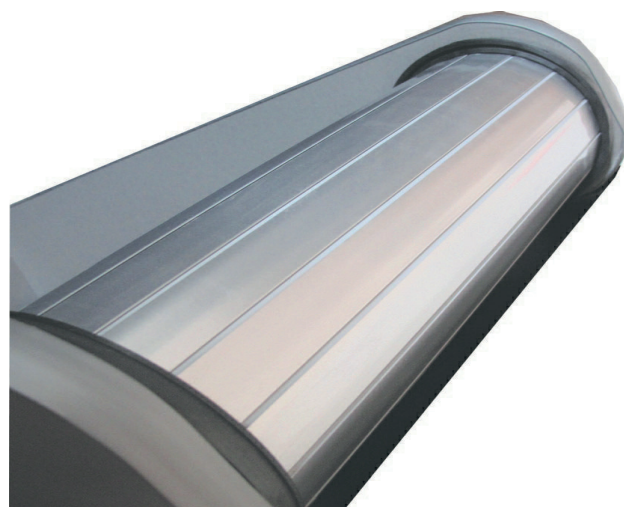


## TAMBOUR DOORS

These tambour doors are available in Black, Smoke and Silver. The doors are easy to fit and are supplied with a magnetic catch. They can be mounted vertically or horizontally. Supplied boxed with:

- Made up door with magnetic catch.
- Track & Spirals.
- Durable Adhesive Tape.
- Fitting Instructions.

Colour	Size (W x H)	Product Code
Gloss Black	350 x 650 mm	96000BL
Silver	350 x 650 mm	96000S
Gloss Black	500 x 650 mm	96001BL
Smoke/Bronze	500 x 650 mm	96001M
Silver	500 x 650 mm	96001S
Gloss Black	650 x 650 mm	96002BL
Smoke/Bronze	650 x 650 mm	96002M
Silver	650 x 650 mm	96002S



SMOKE/BRONZE



SILVER



BLACK



## VW T5/T6 ALUMINIUM ROOF BED

The roof beds have an outer frame made from aluminium and an inner frame made from hardwood that holds the bamboo slats. This design creates a very strong and comfortable base to sleep on. The bed comes with gas struts and fixing brackets to attach to the safety frame fitted to the base vehicle.

Approx dimensions: 110.5 cm x 186 cm.

Designed for Reimo style roof.

**25001**



## CAMPERVAN BED FRAME

These rear beds should be used in the rear of the base vehicle - placed opposite each other. The top of the beds are fitted with bamboo slats and are hinged, opening up on gas struts to gain access to storage areas. Both are fitted with sliders.

Suitable for vehicles including Ducato, Crafter, Sprinter, Boxer and Relay.

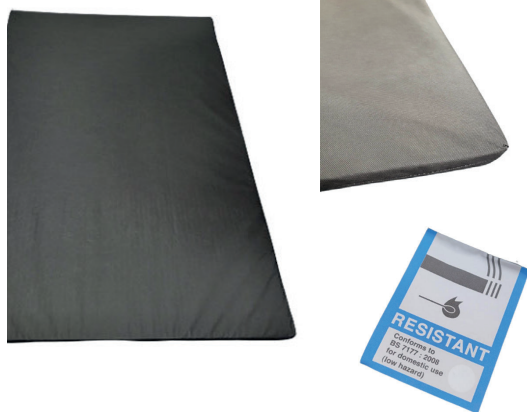
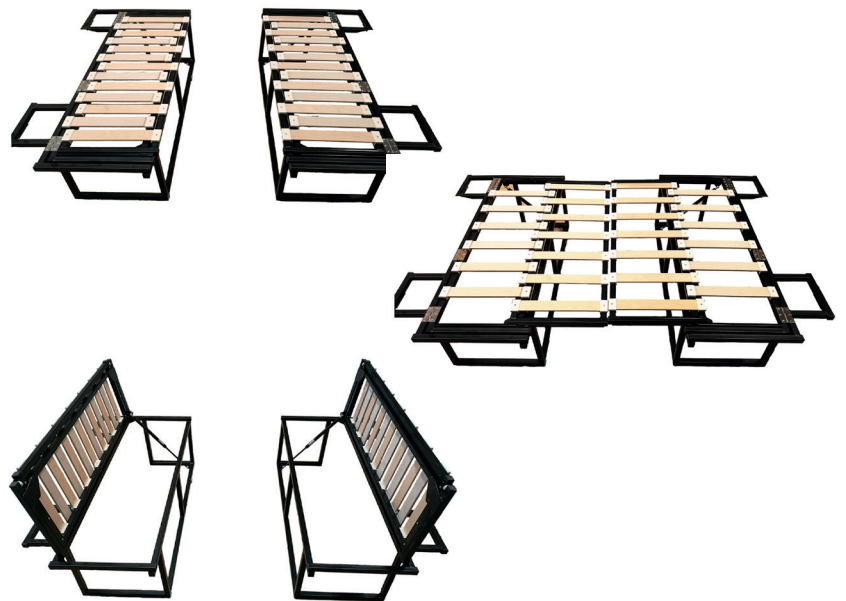
Two sizes available:

Small: Bed size is approx. 120 cm x 184 cm when pulled out.

Large: Bed size is approx. 180 cm x 184 cm when pulled out.

**25002** Small

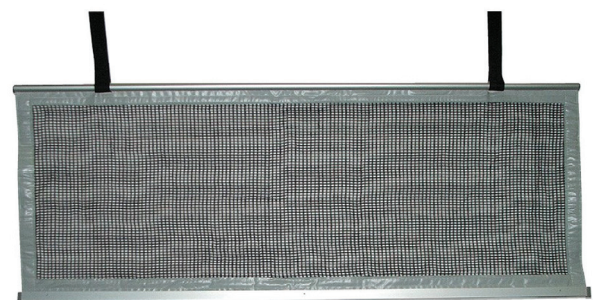
**25003** Large



## ROOF BED MATTRESS

Removable flame retardant cover with zip down one side for easy removal. Conforms to BS7177:2008 for domestic use : Low Hazard. Compatible for a Reimo roof bed : T5/ T6. Size : 1800 x 1110 x 25 mm (L x W x D).

**25005**



## LUTON SAFETY NET

Ideal to secure Luton beds in motorhomes or horseboxes.

Size : 1500 x 580 mm.

**30647**



## INTERNAL THERMAL BLINDS

Seven layer thermal blind sets, designed to be installed on the inside of the vehicle. Blinds are secured using supplied suction pads. Includes storage bag.

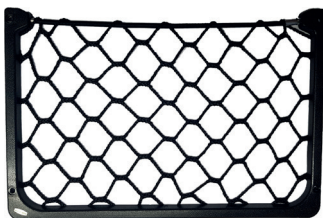
Product Code	Colour	Pieces
60301	VW T4	3
60302	VW T5/T6	3
60303	VW Caddy	3
60304	Mercedes Sprinter/VW Crafter	3
60305	Mercedes Vito	3
60306	Ducato/Relay/Boxer	3
60307	Ford Custom	3
60308	Renault Trafic 2004 - 2013	3
60309	Renault Trafic 2014 +	3
60310	VW Crafter 2017+	3



**SPARE SUCTION PADS**

Sold individually.

**60142**



### STORAGE NET

Elasticated storage net.  
Colour: Black.  
Size: 300 x 170 mm (W x H).

**60100**



### STORAGE POCKET

Plastic storage pocket.  
Colour: Dark Grey.  
Size: 234 x 130 x 50 mm  
(W x H x D).

**60111**



### TITTA LADDER

Internal aluminium ladder with five steps for use inside motorhomes, caravans or horseboxes with bunks or luton.

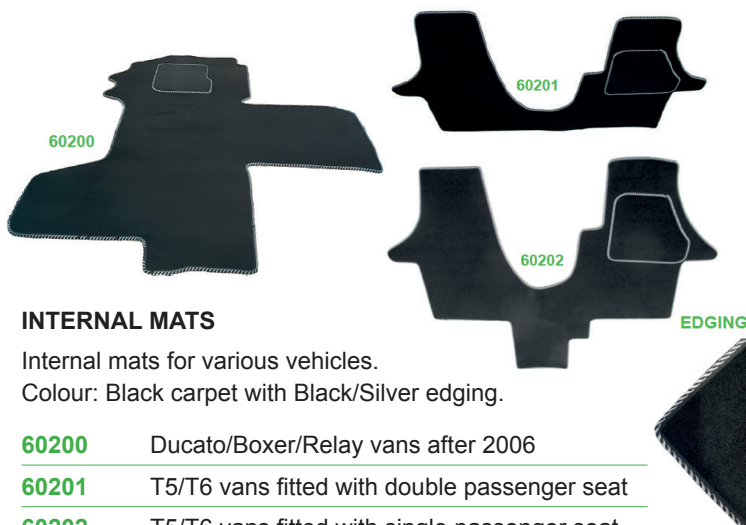
Size: 1500 x 280 mm  
(L x W).

**30645**

### TITTA FOLDING LADDER

Internal aluminium ladder with 5 steps for use inside motor homes, caravans or horseboxes with bunks or luton. Extended Size: 1500 x 280 mm (L x W). Folds down to 750 mm.

**30649**



### INTERNAL MATS

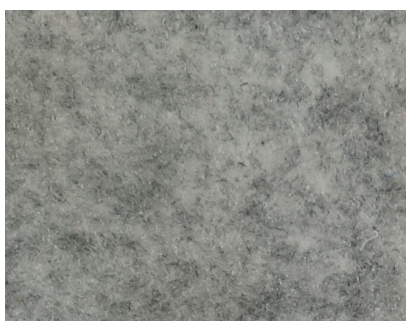
Internal mats for various vehicles.  
Colour: Black carpet with Black/Silver edging.

- 60200** Ducato/Boxer/Relay vans after 2006
- 60201** T5/T6 vans fitted with double passenger seat
- 60202** T5/T6 vans fitted with single passenger seat
- 60251** Ford Custom single seat (pair)
- 60252** Ford Custom double seat



This is a high quality, flexible lining carpet that can be moulded to the internal shape of the vehicle. Ideal for horseboxes, campervans, motorhomes and other leisure vehicles. Made in Europe.

<b>Manufacturing process</b>	Needlefelt							ISO 2424
<b>Surface Aspect</b>	Dilour							ISO 2424
<b>Width</b>	206 cm, 137 cm							EN 984
<b>Backing</b>	XX							ISO 2424
<b>Fibre Composition</b>	100% PES							
<b>Total fibre weight of use surface</b>	300 gr/m <sup>2</sup>				+/- 15%			
<b>Total Weight</b>	300 gr/m <sup>2</sup>				+15% / - 10%			ISO 8543
<b>Total Height</b>	4.4 mm							ISO 1765
<b>Colour Fastness to Light</b>	≥ 5							ISO 105-B02
<b>Colour Fastness to Rubbing, wet and Dry</b>	≥ 4							ISO 105-X12
<b>Colour Fastness to Water</b>	≥ 4							ISO 105-E01
<b>Electrostatic Charging</b>	< 2kV							ISO 6356
<b>Impact Sound Protection ▲LW</b>	10 dB							ISO 10140
<b>Acoustical Sound Absorption αS</b>	<b>Hz</b>	125	250	500	1000	2000	4000	ISO 354
	<b>αW</b>	0.01	0.04	0.08	0.14	0.22	0.25	
<b>Evaluated Sound Absorptions Grade αW</b>	0.15							ISO 11654
<b>Flammability</b>	BFL.s1							EN 13501-1



**SILVER**

50425-40 SuperFlex 40 metre roll



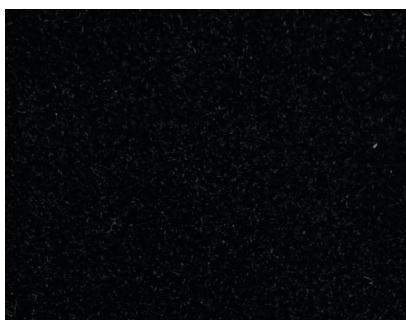
**ANTHRACITE**

50427-40 SuperFlex 40 metre roll



**SMOKE**

50426-40 SuperFlex 40 metre roll



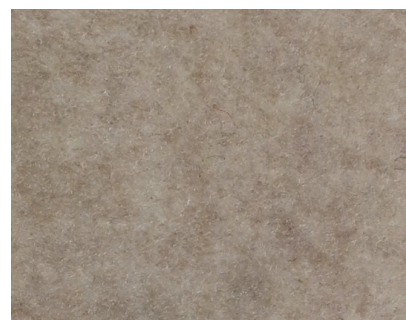
**BLACK**

50428-40 SuperFlex 40 metre roll



**BLUE**

50429-40 SuperFlex 40 metre roll



**WHEAT**

50430-40 SuperFlex 40 metre roll



## WEB TACK

High quality industrial grade adhesive perfectly suited to carpet and thick fabric bonding.

It's super high tack makes it ideal for applying in overhead and vertical operations.

- 50620**      500 ml can

---

- 50621**      17 kg canister



*See [grassroutesleisure.co.uk](http://grassroutesleisure.co.uk) for data sheets*



## WEB TACK GUN/HOSE KIT

A kit that contains a spray gun and hose kit to be used for applying web tack canister adhesive

**50622**



## SPRAY CLEANER

Solvent based spray cleaner 500 ml.

**50625**



## ADHESIVE SEALER

Polyurethane high bond adhesive sealer. Can be painted over.

Size: 310 ml.

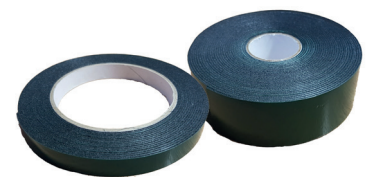
- 30604W**    White

---

- 30604G**    Mid Grey

---

- 30604B**    Black



## DOUBLE SIDED ADHESIVE TAPE

Strong adhesive double sided tape. Size: 5 metre roll.

- 60102**      12 mm

---

- 60103**      25 mm



*Ready made blackout curtains suitable for a variety of leisure vehicles.*



Blackout curtain features include:-

- Curtains are made from flexible jersey material.
- Curtain colour: black one side and grey the other side, with the exception of the cab partition **60215** which is Grey/Grey.
- Curtains can be fitted either way around.
- Track is made from powder coated aluminium.
- Available with straight (unformed) or pre-formed track.

Track colour: Matt Silver.

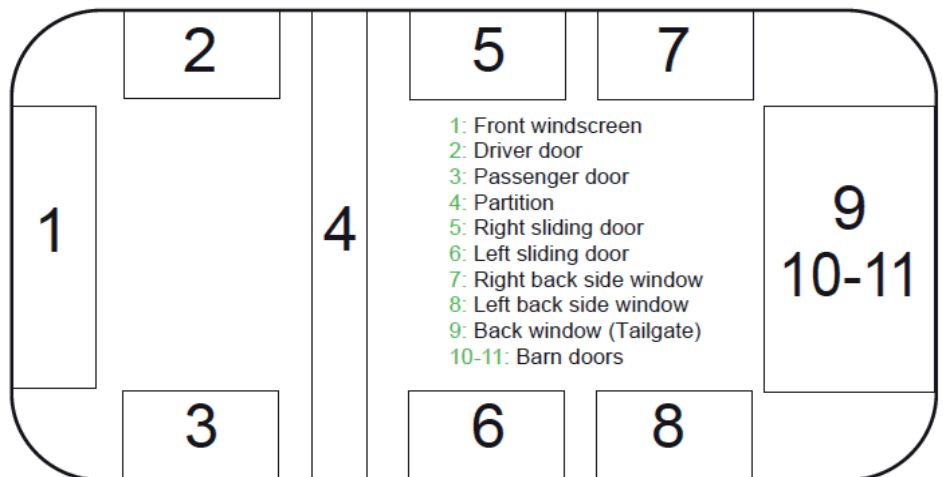
All curtains are supplied with poppers, tie backs, end stops and fitting screws.



Straight



Pre-formed



**SPARE POPPERS**

Spare poppers for curtains.  
 Bag of 5. W4 Packed.



**60231**

**POPPER CLOSING TOOL**

Popper closing tool to assist when replacing damaged poppers. W4 Packed.



**60230**

**CURTAIN TRACK SET**

Silent Gliss curtain track set.

Supplied packed.

Comprising of:-

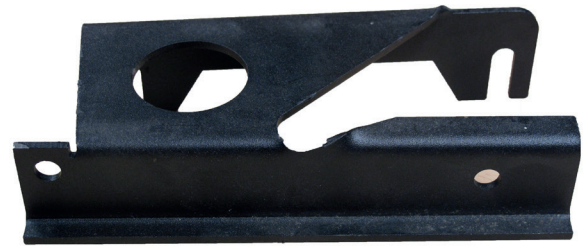
- 1.3 m curtain track.
- 2 x end stops.
- 4 x fixing screws.
- 25 gliders and 25 curtain hooks.



**30377**



To Fit Vehicle	WB	Curtain Information	Colour	Fit Windows	Part No
VW T4/T5/T6/Mercedes Vito		Individual curtain set unformed side windows	Black/grey	5/6/7 & 8	<b>60203</b>
VW T4/T5/T6/Mercedes Vito		Individual curtain unformed for tailgate	Black/grey	9	<b>60204</b>
VW T5/T6	SWB	Curtain set with preformed track	Black/grey	5/6/7/8 & 9	<b>60205</b>
VW T5/T6	LWB	Curtain set with preformed track	Black/grey	5/6/7/8 & 9	<b>60206</b>
VW T4	LWB	5 curtain set with preformed track	Black/grey	5/6/7/8 & 9	<b>60207</b>
Mercedes Vito 2004 - 2015	MWB	5 curtain set with preformed track	Black/grey	5/6/7/8 & 9	<b>60208</b>
Renault Trafic/Vauxhall Vivaro	LWB	5 curtain set with preformed track (tailgate)	Black/grey	5/6/7/8 & 9	<b>60209</b>
Renault Trafic/Vauxhall Vivaro	SWB	5 curtain set with preformed track (tailgate)	Black/grey	5/6/7/8 & 9	<b>60210</b>
VW T5/T6	SWB	6 curtain set with preformed track (barn doors)	Black/grey	5/6/7/8/10 & 11	<b>60211</b>
VW T5/T6	LWB	6 curtain set with preformed track (barn doors)	Black/grey	5/6/7/8/10 & 11	<b>60212</b>
VW T5/T6		2 curtain set with preformed track for barn doors	Black/grey	10 & 11	<b>60214</b>
VW T5/T6		1 curtain set with straight rail for cab partition	Grey/grey	4	<b>60215</b>
VW T5/T6		4 curtain set with preformed track for barn doors	Black/grey	5/6/10 & 11	<b>60216</b>
VW T5/T6		3 curtain set with preformed track with tailgate	Black/grey	5/6 & 9	<b>60217</b>
VW T5/T6		1 curtain set with preformed track for tailgate	Black/grey	9	<b>60218</b>
VW Caddy		1 curtain set with preformed track for LH sliding door	Black/grey	6	<b>60219</b>
VW Caddy		1 curtain set with preformed track for RH front side	Black/grey	5	<b>60220</b>
VW Caddy	SWB	1 curtain set with preformed track for RH rear side	Black/grey	7	<b>60221</b>
VW Caddy	SWB	1 curtain set with preformed track for LH rear side	Black/grey	8	<b>60222</b>
VW Caddy		1 curtain set with preformed track for tailgate	Black/grey	9	<b>60223</b>
VW Caddy		2 curtain set with preformed track for barn doors	Black/grey	10 & 11	<b>60224</b>
Mercedes Sprinter		1 curtain set with preformed track for LH sliding door	Black/grey	6	<b>60225</b>
Mercedes Sprinter		1 curtain set with preformed track for RH front	Black/grey	5	<b>60226</b>
Mercedes Sprinter	LWB	1 curtain set with preformed track for RH rear side	Black/grey	7	<b>60227</b>
Mercedes Sprinter		1 curtain set with preformed track for LH rear side	Black/grey	8	<b>60228</b>
Mercedes Sprinter		2 curtain set with preformed track for barn doors	Black/grey	10 & 11	<b>60229</b>
Renault Trafic/Vauxhall Vivaro	SWB	5 curtain set with preformed track (barn doors)	Black/grey	5/6/7/8/10 & 11	<b>60232</b>
Ford Tourneo	SWB	4 curtain set with preformed track & n/s & o/s sliding doors	Black/grey	5/6/7 & 8	<b>60235</b>
Ford Tourneo	LWB	4 curtain set with preformed track & n/s & o/s sliding doors	Black/grey	5/6/7 & 8	<b>60235L</b>
Ford Custom	SWB	4 curtain set with preformed track with LH sliding door	Black/grey	5/6/7 & 8	<b>60236</b>
Ford Custom/Tourneo	SWB	1 curtain set with preformed track for tailgate	Black/grey	9	<b>60237</b>
Ford Custom/Tourneo	SWB	2 curtain set with preformed track for barn doors	Black/grey	10 & 11 (barn doors)	<b>60238</b>
Renault Traffic 2014 onwards	SWB	Curtain set with preformed curtain track, fixings & tie backs	Black/grey	5/6/7/8/9 (tailgate)	<b>60239</b>
Renault Traffic 2014 onwards	SWB	Curtain set with preformed curtain track, fixings & tie backs	Black/grey	5/6/7/8/10 & 11	<b>60240</b>

**MIBIFRAME****FORD CUSTOM DOUBLE SEAT SWIVEL FITTED****SPORTSCRAFT®**  
by SUNVIAUTO**HAND BRAKE ADAPTOR**

Sportscraft handbrake adapter for VW T5/T6. Bolts included.

**60122****MIBIFRAME****NEW****FORD CUSTOM DOUBLE SEAT SWIVEL**

Rotating double passenger seat swivel for Ford Custom 2017 onwards.

Features include:-

- Fully tested according to ECE requirements for M1 and N1 vehicles.
- Rotating base of double passenger seat.
- 306° rotating system.
- Easy to fit and use.
- For right hand drive vehicles.
- Compatible with original Ford seats.

**60176****MIBIFRAME****VW T5/T6 DOUBLE SEAT SWIVEL**

Rotating double passenger seat swivel for VW T5/T6 and is compatible with models like: Caravelle, Multivan, Transporter manufactured from 2003 to current model.

Features include:-

- Fully tested according to ECE requirements for M1 and N1 vehicles.
- Rotating base of double passenger seat.
- 306° rotating system.
- Easy to fit and use.
- For right hand drive vehicles.
- Compatible with original Volkswagen seats.

**60175**



# SEAT SWIVELS

# INTERNAL FIXTURES/FITTINGS



Make	Model	Year	Safebox	Approved	Made by	Part No	Side	Part No	Side
Citroën	Relay	To 2006	No	TUV	Sportscraft	60123D	Driver	60123P	Passenger
Citroën	Jumper	2006+	No	TUV	Sportscraft	60121D	Driver	60121P	Passenger
Citroën	Relay	2006+	No	-	FASP	60165D	Driver	60165P	Passenger
Fiat	Boxer	2006+	No	TUV	Sportscraft	60121D	Driver	60121P	Passenger
Fiat	Ducato	To 2006	No	TUV	Sportscraft	60123D	Driver	60123P	Passenger
Fiat	Ducato	2006+	No	TUV	Sportscraft	60121D	Driver	60121P	Passenger
Fiat	Ducato	2006+	No	-	FASP	60165D	Driver	60165P	Passenger
Ford	Transit	02-12	No	TUV	Sportscraft	60126D	Driver	60126P	Passenger
MAN	TGE	2017+	No	TUV	Mobicool	60128D	Driver	60128P	Passenge
Mercedes	Sprinter	To 2006	No	TUV	Sportscraft	60124D	Driver	60124P	Passenger
Mercedes	Sprinter	2007+	No	TUV	Sportscraft	60125D	Driver	60125P	Passenger
Mercedes	Vito	To 2002	No	TUV	Sportscraft	60133D	Driver	60133P	Passenger
Mercedes	Vito	02-14	No	-	FASP	60163D	Driver	60163P	Passenger
Peugeot	Boxer	To 2006	No	TUV	Sportscraft	60123D	Driver	60123P	Passenger
Peugeot	Boxer	2006+	No	-	FASP	60165D	Driver	60165P	Passenger
Renault	Master	04-10	No	TUV	FASP	60160D	Driver	60160P	Passenger
Renault	Master	2010+	No	-	FASP	60164D	Driver	60164P	Passenger
Renault	Trafic	2014+	No	-	FASP	60161D	Driver	60161P	Passenger
Vauxhall	Movano	04-10	No	TUV	FASP	60160D	Driver	60160P	Passenger
Vauxhall	Movano	2010+	No	-	FASP	60164D	Driver	60164P	Passenger
Vauxhall	Vivaro	2014+	No	-	FASP	60161D	Driver	60161P	Passenger
VW	LT35	To 2006	No	TUV	Sportscraft	60124D	Driver	60124P	Passenger
VW	Crafter	2007+	No	TUV	Sportscraft	60125D	Driver	60125P	Passenger
VW	Crafter	2017+	No	TUV	Mobiframe	60128D	Driver	60128P	Passenger
VW	T4	1994+	No	TUV	Sportscraft	60120D	Driver	60120P	Passenger
VW	T4	To 1996	No	-	FASP	60162D	Driver	60162P	Passenger
VW	T4	After 97	No	-	FASP	60166D	Driver	60166P	Passenger
VW	T5	All	No	TUV	Sportscraft	60127D	Driver	60127P	Passenger
VW	T6	All	No	TUV	Sportscraft	60127D	Driver	60127P	Passenger
VW	T6	All	Yes	TUV	Sportscraft	60129*	Both		

\*If fitting to the drivers side, you will also need item **60122** - Handbrake Adaptor. For T5/T6. See page 28.

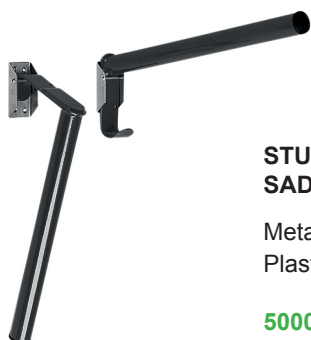




**STUBBS DETACHABLE SADDLE RACKS**

Detachable metal saddle racks. Plastic coated in Black. Available in the following configurations:

- 50003** Stubbs 2 tier saddle rack
- 50004** Stubbs 3 tier saddle rack
- 50005** Stubbs 4 tier saddle rack



**STUBBS FOLDING SADDLE RACK**

Metal folding saddle rack. Plastic coated in Black.

**50006**



**STUBBS BRIDLE RACK**

A metal plastic coated bridle rack. Colour: Black. Depth: 70 mm.

**50001**



**TIE RING**

High impact plastic surround with steel zinc plated ring. Pull strength: 650 kg.

**50201**



**STUBBS LUGGAGE RACK**

Metal luggage rack plastic coated in Black. Size: 370 x 60 x 300 mm (W x H x D). Weight: 3.35 kg.

**50014**



**STUBBS HOOKS**

Metal hooks. Plastic coated in Black. Pack of 5.

**50019**





## SAFETY DEVICES

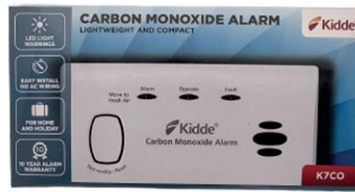
## INTERNAL FIXTURES/FITTINGS



### KIDDE SMOKE/CO ALARM

The Kidde 10SCO is a battery operated combination alarm offering protection from the dangers of both smoke and carbon monoxide in a single unit for added convenience.

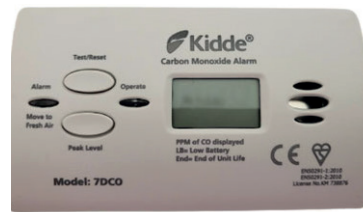
**30662** 10SCO



### KIDDE CO ALARM

The Kidde 7CO alarm protects against the dangers of deadly carbon monoxide levels and provides continuous monitor of CO levels.

**30663** K7CO



### KIDDE CO ALARM

The Kidde 7DCO has the same specification as the 7CO and includes the addition of a digital display.

**30664** 7DCO



### FIRE EXTINGUISHER 600 G

The Jactone 600 g BC powder aerosol extinguisher is Kite mark certified to BS6165. The stored pressure aerosol extinguisher is suitable for use on class B and C fires, meaning that it's ideally suited for domestic and leisure use. Mounting bracket included.

**30627**



### FIRE EXTINGUISHER 950 G

The Jactone 950 g BC powder aerosol extinguisher is Kite mark certified to BS6165. The stored pressure powder aerosol extinguisher is suitable for use on class B and C fires, meaning that it's ideally suited for domestic and leisure use. Mounting bracket included.

**30628**



### FIRE EXTINGUISHER 1 KG

This high-performance 1 kg fire extinguisher has a built-in content gauge. It is suitable for all types of fire. Light for its capacity with high corrosion resistance. Includes mounting bracket.

**30629**

# SINKS

# KITCHEN APPLIANCES

FOR TAP OPTIONS SEE PAGE 40 - 41



**DOMETIC VA928**  
 Round stainless steel sink. Includes seal & sink waste. Finished in stainless steel.  
 Dimensions: Ø : 400 mm; Height: 130 mm. Colour: Inox. Weight: 1 kg.

10071



**CAN LA1418**  
 Round Matt Finished sink. Includes sink waste.  
 Dimensions: Ø : 385 mm; Height: 120 mm. Weight: 1.5 kg.

10670



**CAN LA1404**  
 Rectangular semi-polished sink. Includes sink waste.  
 Dimensions: 170 x 150 x 320 mm (W x H x D). Weight: 0.8 kg.

10672



**DOMETIC VA930**  
 Rectangular stainless steel sink. Includes seal & sink waste.  
 Dimensions: 280 x 145 x 380 mm (W x H x D). Weight: 1 kg.

10076



**CAN LA1400**  
 Rectangular semi-polished sink. Includes sink waste.  
 Dimensions: 320 x 150 x 260 mm (W x H x D). Weight: 1 kg.

10675



**CAN LA1402**  
 Rectangular semi-polished sink. Includes sink waste.  
 Dimensions: 350 x 150 x 320 mm (W x H x D). Weight: 1.5 kg.

10673



**CAN LA1401**  
 Rectangular semi-polished sink. Includes sink waste.  
 Dimensions: 355 x 150 x 260 mm (W x H x D). Weight: 1.3 kg.

10676



**CAN LA1403**  
 Rectangular sink. Includes sink waste.  
 Dimensions: 360 x 150 x 360 mm (W x H x D). Weight 1.6 kg.

10671 Matt Finish  
 10674 Semi-polished



**DOMETIC VA910**  
 Square stainless steel sink. Includes seal & sink waste.  
 Dimensions: 370 x 125 x 370 mm (W x H x D). Weight : 1 kg.

10070



# SINKS

# KITCHEN APPLIANCES

FOR TAP  
OPTIONS  
SEE PAGE  
40 - 41



### CAN LR1770

Round sink with glass lid. Includes sink waste. Tap hole. Tap not included.

Dimensions: Ø : 407 mm. Depth: 150 mm. Weight: 3.58 kg.

10665



### CAN LR1760

Rectangular sink with glass lid. Excludes hole and tap.

Dimensions: 320 x 150 x 350 mm (W x H x D). Weight: 4.5 kg.

10677



See item 10501 for matching hob



### DOMETIC SNG4133

Stainless steel rectangular sink with glass lid. Excludes tap hole and tap.

Dimensions: 410 x 124 x 335 mm (W x H x D). Weight: 4 kg.

10504



See item 10025 for matching hob



### DOMETIC VA8005

Stainless steel flush fitting sink with heat resistant safety glass lid. Includes Seal, sink waste & tap hole.

Dimensions: 410 x 146.5 x 370 mm (W x H x D). Weight: 2.7 kg.

10024



See item 10706 for matching hob



### CAN LR1375

Stainless steel rectangular sink with glass lid. Includes sink waste. Available with or without a tap hole. Excludes Tap. Dimensions: 375 x 125 x 300 mm (W x H x D). Weight : 1.4 kg.

10704 Excludes Tap Hole/Waste

10705 Includes Tap Hole/Waste





**CAN FC1343**

Stainless steel triangular three-burner gas hob with the lid fitted to the left hand. Electronic ignition.

Dimensions: 480 x 90 x 480 mm (W x H x D).  
Colour: Matt Silver.  
Weight: 5.5 kg.

10650



**CAN FC1344**

Stainless steel triangular three-burner gas hob with the lid fitted to the right hand. Electronic ignition.

Dimensions: 480 x 90 x 480 mm (W x H x D).  
Colour: Matt Silver.  
Weight: 5.5 kg.

10651



**CAN FC1345**

Round single burner hob with tempered smoked glass lid and electronic ignition.

Dimensions: Ø : 340 mm. Height: 80 mm.  
Colour: Matt Silver.  
Weight: 2.13 kg.

10617



**DOMETIC HBG2335**

Stainless steel two-burner hob with heat-resistant safety glass lid. No ignition.

Dimensions: 460 x 90 x 335 mm (W x H x D).  
Colour: Inox.  
Weight: 3.3 kg.

10501



**DOMETIC PI8022**

Stainless steel flush-fitting two-burner hob with heat-resistant safety glass lid and electronic ignition.

Dimensions: 480 x 90 x 370 mm (W x H x D).  
Colour: Inox.  
Weight: 4.3 kg.

10025



**NEW**

**CAN FC1346-E**

Two-burner hob with glass lid with electronic ignition

Dimensions: 460 x 78 x 335 mm (W x H x D).  
Weight: 4.5 kg.

10706





**NEW**



### PORTABLE INDUCTION SINGLE HOB

This single induction hob is portable and easily stored. Great for hiding away in a drawer and putting on the surface when required.

Voltage 230V AC | 50Hz : 1500W maximum power. Variable power consumption | 8 settings 200W-1500W - ideal for inverter use. A-grade black crystal plate Ø : 260 mm. Double layered coil heating. Housing material : PP+ABS. Intelligent cooking function. Power indication on display. Over heat + Voltage + current protection. Auto shut off in 1 minute without induction pan. 1.5 metre of AC cable with British standard BS plug. CE, EMC, ROHS Approval. This product will only work with iron pans designed for induction use.

Dimensions: 282 x 311 x 72 mm.

**10800**

**STERLING  
POWER**

**NEW**



### BUILT-IN SINGLE INDUCTION HOB

This single induction hob is designed for a fixed installation on a counter surface. The user can change settings via the remote control. Features include:-

Voltage 230V AC | 50Hz : 1500W maximum power. Variable power consumption | 8 settings 200W-1500W - ideal for inverter use. A-grade black crystal plate Ø : 260 mm. Coil heating. Housing material : PP. Intelligent cooking function. Power indication on display. Over heat + Voltage + current protection. Auto shut off in 1 minute without induction pan. 1.5 metre of AC cable with British standard BS plug. CE, EMC, ROHS Approval. This product will only work with iron pans designed for induction use.

Dimensions: 282 x 82 mm.

**10801**

**STERLING  
POWER**

**NEW**



### BUILT-IN TWIN INDUCTION HOB

This twin induction hob is designed for a fixed installation on a counter surface and has a control panel to apply changes. Features include:-

Voltage 230V AC | 50Hz : 2800W maximum power. Front 1200W maximum; Rear 1800W maximum. Zinc alloy plated bottom. A-grade black crystal plate. Coil heating. Intelligent cooking functions. Power indication on display. Over heat + Voltage + current protection. Auto shut off in 1 minute without induction pan. 1.5 of AC cable with British standard BS plug. CE, EMC, ROHS Approval. This product will only work with iron pans designed for induction use. Size : 495 x 265 mm.

Dimensions: 405 x 265 mm.

**10802**

**STERLING  
POWER**

# COMBINATION UNITS

# KITCHEN APPLIANCES



FOR TAP  
OPTIONS  
SEE PAGE  
40 - 41



### CAN FL1323

One burner hob and sink combination has been designed to be built into (or mounted under) the worktop. This unit is reversible, allowing for either right hand or left hand sink positions. Includes tap hole and sink waste. Piezo ignition. Excludes tap.

Dimensions: 530 x 150 x 340 mm (W x H x D).

Colour: Matt Silver.

Weight: 4.5 kg.

10640



### CAN LC1701

Folding single-burner hob/sink combination with electronic ignition. Includes waste and 27 mm tap hole. Excludes tap.

Dimensions: Ø : 340 mm 180 x 380 (H x D)

When open: 690 mm Width.

Colour: Matt Silver.

Weight: 6 kg.

10615



### DOMETIC 8821 RH

Single burner hob and right hand sink combination with Piezo ignition. Includes tap hole, seal and sink waste. Excludes tap.

Dimensions: 525 x 152 x 421 mm (W X H X D).

Colour: Inox.

Weight: 5.16 kg.

10120



### DOMETIC 8821 LH

Single burner hob and left hand sink combination with Piezo ignition. Includes tap hole, seal and sink waste. Excludes tap.

Dimensions: 525 x 152 x 421 mm (W X H X D).

Colour: Inox.

Weight: 5.16 kg.

10121



### CAN FL1323

Single-burner hob and right hand sink combination with single glass lid and Piezo ignition. Includes tap hole, sink waste and seal. Excludes tap.

Dimensions: 530 x 150 x 340 mm (W x H x D).

Colour : Matt Silver.

Weight: 4.5 kg.

10657



### CAN FL1324

Single-burner hob and left hand sink combination with single glass lid and Piezo ignition. Includes tap hole, sink waste and seal. Excludes tap.

Dimensions: 530 x 150 x 340 mm (W x H x D).

Colour : Matt Silver.

Weight: 4.5 kg.

10656







FOR TAP OPTIONS  
SEE PAGE  
40 - 41

**CAN FL1401**

Two burner hob and sink combination has been designed to be built into (or mounted under) the worktop. This unit is reversible, allowing for either right hand or left hand sink positions. Includes tap hole and sink waste. Piezo ignition.

Dimensions: 716 x 150 x 340 mm (W x H x D).

Colour: Matt Silver.

Weight: 5 kg.

**10645**



**DOMETIC SNG2460L**

Stainless steel two burner hob/sink combination. Sink on left hand side. Includes sink waste. Excludes glass lid, tap hole and tap.

Dimensions: 490 x 120 x 460 mm (W x H x D)

Weight: 4.48 kg

**10026**



**CAN FL1410/FL1400**

Two burner hob with either right hand or left hand sink. Fitted with single glass lid. Includes tap hole, sink waste and seal. Excludes tap. Piezo ignition.

Dimensions: 716 x 150 x 340 mm (W x H x D).

Colour: Matt Silver.

Weight: 5 kg.

**10661** CAN FL1410 LH sink

**10660** CAN FL1400 RH sink



**CAN FL1402/FL1401**

Two burner hob with either right hand or left hand sink. Fitted with twin glass lids. Includes tap hole, sink waste and seal. Excludes tap. Piezo ignition.

Dimensions: 716 x 150 x 340 mm (W x H x D).

Colour: Matt Silver.

Weight: 5 kg.

**10701** CAN FL1402 LH sink

**10658** CAN FL1401 RH sink



**DOMETIC MO9722**

A compact stainless steel two burner hob with either right hand or left hand sink and fitted with twin glass lids. Includes tap hole, sink waste, fitting kit and seal. Piezo ignition.

Dimensions: 760 x 178 x 325 mm (W x H x D).

Weight: 6 kg.

Colour: Inox.

**10115LH** MO9722 with LH sink

**10115RH** MO9722 with RH sink



FOR TAP  
OPTIONS  
SEE PAGE  
40 - 41

## CAN FL1765/FL1766

A compact, matt stainless steel two burner hob available with either right hand or left hand sink. Fitted with twin glass lids. Includes tap hole, sink waste and seal. Excludes tap. Piezo ignition.

Dimensions: 765 x 150 x 355 mm (W x H x D).  
Colour: Matt Silver.  
Weight: 6 kg.

10699LH

10699LH CAN FL1766 LH Sink

10699RH CAN FL1765 RH Sink



10699RH



## CAN FL1770/FL1780

A compact, matt stainless steel two burner hob available with either right hand or left hand sink. Fitted with single glass lid. Includes tap hole, sink waste and seal. Excludes tap. Piezo ignition.

Dimension: 765 x 150 x 355 mm (W x H x D).  
Colour: Matt Silver.  
Weight: 6 kg.

10680LH

10680LH FL1780 LH Sink

10680RH FL1770 RH Sink



10680RH



## DOMETIC 9222

Two burner hob/sink combination available with either right hand or left hand sink and features twin glass lids and Piezo ignition. Includes tap hole and sink waste. Excludes tap.

Dimensions: 900 x 152 x 370 mm (W x H x D).  
Colour: Inox.  
Weight: 5.8 kg.

10110LH 9222 LH Sink

10110RH 9222 RH Sink



10110LH

10110RH







**DOMETIC MW0240 MICROWAVE 230 V**

User-friendly microwave with five cooking levels. Defrosting function. Integrated easy-to-clean ceramic plate. Approved by leading motorhome manufacturers. Illuminated to easily check on the microwave's contents. Door lock. LED display and cooking end signal.

Size: 451 x 257 x 328 mm (W x H x D).  
Weight: 10.8 kg. For use with 230 V.

10130



**DOMETIC MINI GRILL**

THE VN555 mini grill has a hinged-down black glass door and features 12-volt Piezo ignition.

Size: 485 x 240 x 410 mm (W x H x D).  
Colour: Inox with black handles.  
Weight: 7.94 kg.

10082



**DOMETIC 20 LITRE OVEN/GRILL**

The FO211FGT 20 litre oven/grill combination has a hinged glass door; 12-volt electronic ignition; internal light

Size: 530 x 310 x 410 mm (W x H x D).  
Colour: Inox with Black handles.  
Weight: 13.2 kg.

10028



**DOMETIC 30 LITRE OVEN/GRILL**

This FO311FT 30 litre oven/grill combination has a hinged glass door; 12-volt electronic ignition.

Size: 530 x 430 x 415 mm (W x H x D).  
Colour: Inox with black handles.  
Weight: 19.5 kg.

10027



**NEW**

**DOMETIC 18 LITRE OVEN**

The Dometic OV1800 oven is compact and has electronic ignition and light.

Size: 410 311 x 490 mm(W x H x D).  
Colour: Inox  
Weight: 13.7 kg.

10129



**CAN CU5010 CAMPERVAN OVEN/GRILL**



Stainless steel built-in gas oven/grill with electronic ignition and thermostatic control. Ideal for campervan installations.

General size: 432 x 400 x 371 mm (W x H x D). Please refer to the diagram images on website as there are small elements that extend these measurements.

Colour: Matt Silver.  
Capacity: 23 litres.  
Weight: 18.86 kg.

10703



**KAMPA FREEDOM OVEN**

**NEW**

This 30 litre oven runs on Butane 227g gas cartridges.

Size: 470 x 350 x 345 mm (W x H x D).

Colour: Black  
Capacity: 30 litres.  
Weight: 9 kg.

43073



## COMET FLORENZA TAP

Single-lever fold-down plastic mixer tap with spray outlet and micro switch. Suitable for Smev and Dometic sinks and combination units, as well as the CAN GR1760 & GR1765. Suitable for use with flow pumps. Colour: chrome. These taps are available in the following configurations:



### COMET FLORENZA SINGLE LEVER TAP

This version is supplied unpacked (in a plastic bag). It supplies cold only and has a flexible hose end with a barbed connector (see picture). It is supplied with standard fittings.

**70004C** Cold Only. Unpacked



### COMET FLORENZA SINGLE LEVER TAP

This version is supplied packed with header card. This cold-only version has a flexible hose with push-fit connector (see picture) and is supplied with a selection of connections.

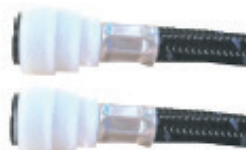
**70004CPK** Cold Only. Unpacked



### COMET FLORENZA SINGLE LEVER MIXER TAP

This version is supplied packed with header card. It has flexible hose ends for both hot and cold water with push-fit connectors (see picture). Supplied with a selection of connections.

**70004PK** Cold Only. Unpacked







### WHALE V PUMP

Self-priming hand pump. Suitable for freshwater. Angle spout and adjustable height. 8 litres per minute. Narrow mounting base. GP0650. 5-year warranty. Supplied packed.

**30074**



### SUPER NOVO SINGLE TAP

Single plastic cold water tap with microswitch. Colour: Dark/Light Grey. Connection: barbed hose tail 45° 8/10 mm. Thread/mounting hole: 3/8".

**70005**



### SUPER NOVO SINGLE TAP

Single plastic cold water tap with microswitch. Colour: Black/Chrome. Connection: barbed hose tail 45° 8/10 mm. Thread/mounting hole: 3/8".

**70014**



### SUPER NOVO MIXER TAP

Hot and cold plastic mixer tap with microswitch. Colour: Chrome/Black. Connection: barbed hose tail straight 1/2". Thread/mounting hole: 2 x 3/8".

**70015** Chrome/Black

### COMET ARONA TAP

For use with CAN sinks and sink/hob combinations.

Single lever single and mixer tap with rotatable spout. Chrome/Black. With micro switch.

The hot/cold version is suitable for hot water up to 1.5 bar.

Mounting hole: Ø : 22 mm.

**70022** Cold only

**70025** Hot/Cold



### COMET ROMA MIXER TAP

Hot & Cold single lever plastic mixer tap with spray outlet and micro switch.

Connection: Nylon flexible 350 mm 1/2" barbed hose tail. Thread/mounting hole: 1". Colour: Chrome. Supplied packed.

**70002** Without Microswitch

**70002M** With Microswitch



### CAN MIXER TAP

Metal single lever fold down chrome plated mixer tap with ceramic valves. Suitable for some CAN units. Without Micro switch. Colour: Chrome. Supplied packed.

**70021** Hot and Cold

**70019** Cold

**32048** Reducing Adaptor



**NEW**

### COMET LUCCA OVAL MIXER TAP

Comet LUCCA Oval Single Lever Mixer Tap. With Microswitch. Rotatable 360°. Size: 305 x 94 mm (H x W). Spout length: 160 mm. Spout height : 220 mm.

**70026**





**MOBICOOL MV26 COOL BOX**

Heavy duty 25 litre coolbox. Runs on 12V or 230V. Locking carry handle. Cable stored in lid.  
Size : 296 x 396 x 396 mm (W x H x D).  
Weight : 4 kg.

25L

30516



**VITRIFRIGO VF16P COOL BOX**

Premium cooler with lightweight compressor. 15 litre capacity. Weight : 8 kg. Power supply and nominal consumption: 12/24 Vdc - 100/240Vac 50/60Hz 45 W.  
Size : 240 x 420 x 560 mm (W x H x D)

15L

30490



**VITRIFRIGO VF35P COOL BOX**

Premium cooler with lightweight compressor. 35 litre capacity. Weight : 19.5 kg. Power supply and nominal consumption: 12/24 Vdc - 100/240Vac 50/60Hz 55 W.  
Size : 410 x 440 x 680 mm (W x H x D)

35L

30491



**VITRIFRIGO VF45P COOL BOX**

Premium cooler with lightweight compressor. 45 litre capacity. Weight : 20.5 kg. Power supply and nominal consumption: 12/24 Vdc - 100/240Vac 50/60Hz 55 W.  
Size : 410 x 490 x 680 mm (W x H x D)

45L

30492



**VITRIFRIGO VF55P COOL BOX**

Premium cooler with lightweight compressor. 55 litre capacity. Weight: 25 kg. Power supply and nominal consumption: 12/24 Vdc - 100/240Vac 50/60Hz 55 W.  
Size : 455 x 500 x 710 mm (W x H x D)

55L

30493



**VITRIFRIGO VF65P COOL BOX**

Premium cooler with lightweight compressor. 65 litre capacity. Weight: 23 kg. Power supply and nominal consumption: 12/24 Vdc - 100/240Vac 50/60Hz 55 W.  
Size : 455 x 500 x 710 mm (W x H x D)

65L

30494





**VITRIFRIGO TL20L**

A top-loading compact refrigerator that fits into the work top. Features a stainless steel liner with removable thermostat and fitted with a black lid with interchangeable panel.

Dimensions: 408 x 578 x 228 mm (W x H x D).

Weight: 17 kg.

**30468** TL20L



**VITRIFRIGO**  
COOL AND BEYOND

20L

**VITRIFRIGO D20A**

Elegantly styled 12 volt compact black drawer fridge that can be fitted into tightest of locations. The compressor and cooling unit can be removed from the back of the drawer and mounted remotely up to 1.5 m giving great flexibility. Uses the latest BD35 compressor designed to run on environmentally friendly R600 refrigerant. Includes fixing kit.

Dimensions: 440 x 250 x 562 mm (W x H x D). Weight: 15 kg.

**30429** D20A



**VITRIFRIGO**  
COOL AND BEYOND

20L

**DOMETIC COOLMATIC CD20**

This black built-in drawer fridge has an interior light, pulls out easily and can be lock securely. An ideal solution for restricted space. The cooling unit can be fitted up to 0.5 metres away.

Dimensions: 440 x 250 x 564 mm (W x H x D).

Weight: 16.4 kg.

**30438** CD20

**30436F** Fixing Kit



**VITRIFRIGO**  
COOL AND BEYOND

20L

**DOMETIC**

**VITRIFRIGO C25P**

A light grey compact slimline larder fridge with detachable compressor and internal light, ideal for campervans.

Dimensions: 425 x 442 x 280 mm (W x H x D).

Weight: 13 kg.

**30467** C25P



**VITRIFRIGO**  
COOL AND BEYOND

25L

**DOMETIC COOLMATIC CD30**

This black built-in drawer fridge has an interior light, pulls out easily and can be lock securely. An ideal solution for restricted space. The cooling unit can be fitted up to 0.5 metres away.

Dimensions: 440 x 250 x 730 mm (W x H x D).

Weight: 19 kg.

**30436** CD30

**30436F** Fixing Kit



**VITRIFRIGO**  
COOL AND BEYOND

30L

**DOMETIC**

**VITRIFRIGO D30A**

Elegantly styled 12 volt compact black drawer fridge that can be fitted into tightest of locations. The compressor and cooling unit can be removed from back of the drawer and mounted remotely up to 1.5 m from the drawer giving great flexibility. Uses the latest BD35 compress designed to run on environmentally friendly R600 refrigerant. Includes fixing kit.

Dimensions: 440 x 250 x 595 mm (W x H x D). Weight: 17 kg.

**30424** D30A



**VITRIFRIGO**  
COOL AND BEYOND

30L

**VITRIFRIGO C37L**

This top-loading fridge unit is designed to drop into an existing work top with the compressor being mounted externally with a 1.4 m flexible copper pipe.

Dimensions: 410 x 410 x 410 mm (W x H x D).  
Weight: 15.5 kg. .

**30428** C37L



**VITRIFRIGO**  
COOL AND BEYOND

37L

**VITRIFRIGO C39I**

This unit is great for campervans and has a fixed compressor with a single shelf, bottle holder and internal light.

Dimensions: 390 x 547 x 355 mm (W x H x D). FD = 397 mm.  
Weight: 17 kg.

**30419** C39i Light Grey

**30419B** C39i Black

**30419F** Fitting Frame Light Grey

**30419FB** Fitting Frame Black

**30422** C39P Larder Fridge



**VITRIFRIGO**  
COOL AND BEYOND

39L

**DOMETIC COOLMATIC CRP40**

This fridge has a detachable compressor, internal light and door with magnetic seal. The door can be hung on the right or left hand side. This fridge has a black body with silver door frame. Door panel is brushed aluminium. Ice box capacity is 5.3 litres.

Dimensions: 380 x 536 x 545 mm (W x H x D).  
Weight: 19 kg.

**30407** CRP40

**30431S** Standard frame

**30431F** Flush frame

**DOMETIC**

39L

**DOMETIC COOLMATIC CB40**

This fridge is ideal for tight spaces and features low energy consumption and detachable cooling unit (1.5 m lead).

Dimensions: 300 x 660 x 500 mm (W x H x D).  
Weight: 19 kg. .

**30437** CB40

**DOMETIC**

40L



**VITRIFRIGO C42L**

This silver refrigerator unit is suitable for campervans and features a detachable compressor (DANFOSS Db35) and LED light. It has a freezer compartment capacity of 3.6 litres

Dimensions: 380 x 532 x 342 mm (W x H x D). Flush Depth = 384 mm.  
Weight: 16 kg.

**30421** C42L Light Grey  
**30421F** Light Grey Frame



42L

**VITRIFRIGO TL43**

Designed for the campervan market the TL43 top opening fridge is perfect for camper kitchens with 380-400 mm depth work tops. The compressor is sited at one end to allow it to sit over the wheel arch on the side kitchen. The TL43 also features VitriFrigo's aluminium finned cooling unit for market leading power consumption running for 3 plus days on a 100a/h battery. Packed with lots of great features - see our website for more details.

Dimensions: 500 x 450 x 340 mm (W x H x D).  
Height with compressor: 620 mm. Weight: 14.5 kg.

**30501** TL43



43L

**VITRIFRIGO C47**

This black fridge has a slide-out tray that is ideal for holding bottles and cans. The compressor is mounted on the back with optional mounting positions. It has a black interchangeable door, single shelf and slide-out drawer

Dimensions: 430 x 392 x 630 mm (W x H x D).  
Compressor Size: 150 x 150 x 185 mm (W x H x D).  
Weight: 19 kg.

**30418** C47



47L

**DOMETIC COOLMATIC CRX50 SILVER**

This Silver fridge has a removable freezer compartment, LED light, dual function door lock and many other features (see our website). The ice box capacity is 4.4 litres.

Dimensions: 380 x 534 x 500 (W x H x D). Weight: 17 kg.

**30431X** CRX50 Silver  
**30431S** Standard Frame  
**30431F** Flush Frame



47L

**DOMETIC COOLMATIC CRX50 BLACK**

This Black fridge has a removable freezer compartment, LED light, dual function door lock and many other features (see our website). The ice box capacity is 4.4 litres.

Dimensions: 380 x 534 x 500 (W x H x D). Weight: 17 kg.

**30431B** CRX50 Black



47L



**VITRIFRIGO GR50 SILVER**

Designed for the campervan market and features the same quality that Vitrifrigo is known for and offers exceptional value for money. Includes additional door shelf and internal light. The freezer capacity is 3.6 litres.

Dimensions: 380 x 530 x 480 mm (W x H x D). Weight: 17 kg.

50L

- 30499** GR50 Light Grey
- 30421F** Light Grey Frame



**VITRIFRIGO GR50 BLACK**

Designed for the campervan market and features the same quality that Vitrifrigo is known for and offers exceptional value for money. Includes additional door shelf and internal light. The freezer capacity is 3.6 litres.

Dimensions: 380 x 530 x 480 mm (W x H x D). Weight: 17 kg.

50L

- 30500** GR50 Black
- 30500F** Black Frame



**VITRIFRIGO C50I**

This unit has a shallow design making it suitable for small leisure vehicles. Fitted with an internal light.

Dimensions: 396 x 636 x 355 mm (W x H x D). Weight: 17 kg.

50L

- 30466** C50i Light Grey
- 30466F** Frame



**VITRIFRIGO C60I**

This unit has a shallow design making it suitable panel van conversions, horse boxes or campervans.

Dimensions: 470 x 622 x 415 (W x H x D). Weight: 20 kg.

60L

- 30451** C60i Black



**DOMETIC RM5310**

The RM5310 features a user-friendly control panel. It is fitted with an interior light, flexible shelf system and door with a magnetic seal. It has reversible door hinges and has battery-powered ignition. The door lock has a vent option.

Dimensions: 486 x 618 x 474 mm (W x H x D). Weight: 20 kg.

60L

- 30519** RM5310





**VITRIFRIGO C62I**

This unit has an integral compressor and features an ice box and LED light.

Dimensions: 450 x 530 x 475 mm (W x H x D). Flush Depth = 517 mm.

Weight: 18 kg.

Colour: Light Grey

**30423** C62i Light Grey

**30423F** Light Grey Frame



**VITRIFRIGO**  
COOL AND BEYOND

62L

**DOMETIC COOLMATIC CRX65**

This fridge is available in silver and has a removeable freezer compartment, LED light, dual function door lock and many other features (see our website). The ice box capacity is 7 litres.

Dimensions: 448 x 525 x 545 mm (W x H x D). Weight: 18 kg.

**30432X** CRX65

**30432S** Standard Silver Frame

**30432F** Flush Frame

**DOMETIC**

64L

**VITRIFRIGO C75L**

This unit features an ice box and LED light and has a detachable compressor.

Total capacity: 75 litres. Freezer compartment capacity: 10 litres.

Dimensions: 470 x 622 x 418 mm (W x H x D). FD = 460 mm.

Weight: 20 kg.

Colour : Light Grey.

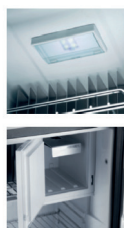
**30427** C75L Light Grey

**30427F** Light Grey Frame



**VITRIFRIGO**  
COOL AND BEYOND

75L

**DOMETIC RM5380**

This unit features a user-friendly control panel. It is fitted with an interior light, flexible shelf system and door with a magnetic seal. It has reversible door hinges and has battery-powered ignition. The door lock has a vent option.

Capacity: 80 litres.

Dimensions: 486 x 821 x 474 mm (W x H x D).

Weight: 24 kg.

**30518** RM5380



**DOMETIC**

80L

**DOMETIC COOLMATIC CRX80**

Total capacity: 80 litres.

Ice box capacity: 7.5 litres.

Dimensions: 475 x 640 x 528 mm (W x H x D).

Weight: 20 kg.

**30433X** CRX80

**30433S** Standard Frame

**30433F** Flush Frame

**DOMETIC**

80L



**VITRIFRIGO C85I**

This is ideal for vehicles requiring a larger fridge.

Dimensions: .485 x 791 x 427 mm (W x H x D)  
Colour : Black.

**30453** C85i

80L



**VITRIFRIGO C90I**

This unit features an integral compressor and is fitted with a 3-star freezer compartment and LED light.

Total capacity: 90 litres. Freezer compartment capacity: 9 litres.  
Dimensions: 470 x 622 x 515 mm (W x H x D). FD = 557 mm.  
Weight: 22 kg.  
Colour: Light Grey

**30425** C90i Light Grey

**30427F** Light Grey Frame

90L



**DOMETIC COOLMATIC CRX110**

Total capacity: 104 litres.  
Ice box capacity: 9.0 litres.  
Dimensions: 520 x 745 x 558 mm (W x H x D).  
Weight: 22.5 kg.

**30434X** CRX110

**30434S** Standard Frame

**30434F** Flush Frame

104L



**VITRIFRIGO C115I**

This unit is fitted with an integral compressor, a 3-star freezer compartment and LED light. Supplied with 2 shelves. Total capacity: 115 litres. Freezer compartment capacity: 14 litres.

Dimensions: 525 x 766 x 518 mm (W x H x D) FD = 560 mm.  
Weight: 23 kg. Colour: Light Grey.

**30426** C115i Light Grey

**30426F** Light Grey Frame

115L



**DOMETIC COOLMATIC CRX140**

Total capacity: 130 litres.  
Ice box capacity: 11 litres.  
Dimensions: 525 x 812 x 620 mm (W x H x D).  
Weight: 30 kg.

**30435X** CRX140

**30435S** Standard Frame

**30435F** Flush Frame

130L



**DOMETIC**



**DOMETIC SINK WASTES**  
Replacement Dometic sink wastes.

**10126** Angled AC540

**10128** Straight AC545

**DOMETIC**



**DOMETIC OVEN HANDLE**  
Replacement black oven handle, suitable for Dometic ovens and mini grill.

**10102**



**CAN SINK WASTE**  
Replacement CAN sink waste. LP1800.

**10619**

**DOMETIC**



**PIEZO IGNITION**  
Piezo Ignition for Dometic hobs.

**10125**

**NEW**

**TAP GUIDE : WHICH TAP TO USE**

Code	Product	Cold Tap	Hot & Cold Tap
<b>10110</b>	Dometic 9222	70004	70004PK
<b>10115</b>	Dometic MO9722	70004	70004PK
<b>10120</b>	Dometic MO8821	70004	70004PK
<b>10121</b>	Dometic MO8821	70004	70004PK
<b>10615</b>	CAN LC1701	70019	N/A
<b>10640</b>	CAN FL1323GP	70022	70025
<b>10645</b>	CAN FL1401GP	70022	70025
<b>10656</b>	CAN FL1324	70022	70025
<b>10657</b>	CAN FL1323	70022	70025
<b>10658</b>	CAN FL1401	70022	70025
<b>10660</b>	CAN FL1400	70022	70025
<b>10661</b>	CAN FL1410	70022	70025
<b>10665</b>	CAN LR1770	70004	70004PK
<b>10680LH</b>	CAN FL1780	70004	70004PK
<b>10680RH</b>	CAN FL1770	70004	70004PK
<b>10699LH</b>	CAN FL1766	70004	70004PK
<b>10699RH</b>	CAN FL1765	70004	70004PK
<b>10701</b>	CAN FL1402	70022	70025
<b>10705</b>	CAN LR1375	70022	70025

See Page 40 - 41 for FULL RANGE of KITCHEN TAPS.

**GLASS LIDS**

**DOMETIC GLASS LIDS**

Code	Description
<b>10084</b>	8006 (10050)
<b>10085</b>	8005 (10024)
<b>10086</b>	8022 (10025)
<b>10087</b>	8023 (10051)
<b>10088</b>	8123 (10041) hob side
<b>10094LH</b>	9722 (10115LH) sink side
<b>10094RH</b>	9722 (10115LH) hob side
<b>10095RH</b>	9722 (10115RH) sink side
<b>10095LH</b>	9722 (10115RH) hob side
<b>10103S</b>	Smev 400 Oven Lid Silver
<b>10106LH</b>	9222LH (10110LH) LH side
<b>10106RH</b>	9222LH (10110LH) RH side
<b>10107LH</b>	9222RH (10110RH) LH Side
<b>10107RH</b>	9222RH (10110LH) RH side
<b>10127RH</b>	8821 (10121) RH Side

**CAN GLASS LIDS**

<b>10678</b>	GR1765 (10699LH) Sink Side
<b>10679</b>	GR1765 (10699RH) Hob Side
<b>10680</b>	FR1765 Single lid (10680LH & RH)
<b>10681</b>	FL1323 Single lid (10657/10656)

Spares are available for Dometic, Smev and CAN units. Please call customer services on 01963 824792 for further information.





## PURVARIO STORAGE SYSTEM

A simple but ingenious storage system that keeps bottles, cups, glasses, plates and pans safe and rattle free whilst in transit. Select the top you require, relevant to the item you wish to keep safe, and then select from two base sizes.

- 29200** Bottle Holder

---

- 29201** Cup/Glass Holder

---

- 29202** Plate/Pan Holder

---

- 29203** Small Base: 300 x 500 mm

---

- 29204** Large Base: 500 x 500 mm



## STORE BLOCK

The Purvario storage system allows you to store and transport those breakable items without damage. The Vario System Modul IV is a six piece block set that sits on top of a base and the blocks can be moved to fit around the items you need to keep safe. An extremely flexible solution.

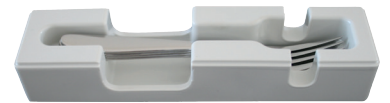
You will also require a base unit (available in two sizes).

- 29205**
- Base sizes:
- 29203** Small: 300 x 500 mm

---

  - 29204** Large: 500 x 500 mm

purvario  
by DÖRR



## CUTLERY TRAY

A universal compartment for cutlery. Comes in four pieces and stacks, allowing for easy removal from the vehicle.

**29208**



## PLATE ASSISTANT

The Vario System Modul V is a four-piece set designed for the safe storage of plates, chopping boards, table mats, flat tupperware, flat pan lids and dishes.

The base of each module is skid resistant and stable. The system is modular and the initial four-piece set can be added to as required.

**29206** purvario  
by DÖRR



## PLATE STORAGE

Designed for quiet transport of plates in the vehicle.

Size: 23.5 x 15 x 23.5 cm (W x H x D)

Features raised grooves and sloping surface to ensure safe and secure storage while in motion.

**29209** purvario  
by DÖRR

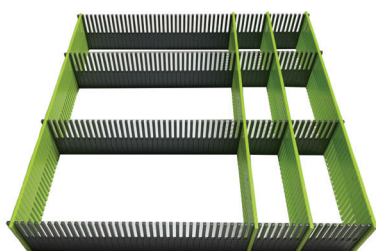


## PURVARIO MULTI TRAY

A drip tray for vinegar, oil, liquors or other bottles. Additional compartments can be used for salt/pepper, shot glasses, spice shakers, etc.

Dimensions: 14.5 x 30 x 30 cm (W x H x D)

**29212** purvario  
by DÖRR



## STOW BARS FOR DRAWERS

A universal and adjustable storage solution for drawers.

8 adjustable pieces to create bespoke compartment sizes.

- 29207** Size: 60 x 325 mm (H x L) – 4 Dark Grey/4 Lime Green

---

- 29210** Size: 100 x 325 mm (H x L) – 4 Dark Grey/4 Lime Green

---

- 29211** Size: 100 x 325 mm (H x L) – 4 Dark Grey/4 Light Grey

purvario  
by DÖRR



**COPPER PIPE**

30 metre roll of copper pipe.  
Ø: 8 mm (5/16").

**30179**



**LOW PRESSURE HOSE**

50 metre roll of low-pressure hose.  
Ø: 8 mm (5/16").

**30120** 50 m Roll  
**30120-1.5** 1.5 metre



**HIGH PRESSURE HOSE**

50 metre roll of high-pressure hose.  
Ø: 8 mm (5/16").

**30138** 50 m Roll  
**30138-1.5** 1.5 metre



**NEW**

**HIGH PRESSURE HOSE KIT**

High pressure hose kit: length of hose plus clips.

**30136** 1 metre  
**30137** 2 metre



**PROPANE PIGTAIL**

Length: 500 mm.

**30121**



**BUTANE PIGTAIL**

Length: 500 mm.

**30122**



**GAS BOTTLE HOLDING STRAP**

Fully adjustable retaining strap.  
Colour: Black.

**30190**



**LEAK DETECTOR SPRAY**

LPG gas leak detector spray. 400 ml can.

**30139**



**FLOOR SEALS - PACK OF TEN**

A range of floor seals ideal for stretching round pipes to leave an attractive finish.

**Black**

**60170** 5-11 mm  
**60171** 10-19 mm  
**60172** 19-28 mm

**Mid Grey**

**60180** 5-11 mm  
**60181** 10-19 mm  
**60182** 19-28 mm



**LPG LABEL**

Single self-adhesive label. 100 x 100 mm.

**71002**

**GAS SEAL PASTE**

TRUMA gas seal paste : 25 g

**30744**





**BUTANE GAS REGULATOR**

Low-pressure butane gas regulator.  
Maximum inlet pressure: 20 bar.  
Operating pressure: 37 mbar. Capacity:  
1 kg/h. Inlet: Union 109.  
Outlet: 8 mm nozzle.

30116



**PROPANE GAS REGULATOR**

Low-pressure propane gas regulator.  
Maximum inlet pressure: 20 bar.  
Operating pressure: 37 mbar.  
Capacity: 1 kg/h. Inlet: POL 105.  
Outlet: 8 mm nozzle.

30117



**BUTANE GAS REGULATOR**

Low pressure butane gas regulator.  
Maximum inlet pressure: 6 bar. Operating  
pressure: 29 mbar; Capacity: 0.8 kg/h;  
Inlet: 16 x 1.5; Outlet: 8 mm nozzle.

30118



**BUTANE GAS REGULATOR**

For gas cartridges/canisters with a  
threaded valve.

30175



**BULKHEAD REGULATOR**

Caravan regulator 30 mb. W20 x 8 mm  
compression.

30149



**BULKHEAD REGULATOR**

Caravan regulator 30 mb. 90° angle.  
W20 x 8 mm compression.

30150



**BUTANE GAS REGULATOR 21 MM**

21mm Butane Clip-On Gas Regulator.  
Max Inlet pressure 7.5 bar. Capacity  
1.5kg/hr. Operating pressure 30 mbar.  
Nozzle outlet to suit 8mm ID hose.

30110



**PROPANE GAS REGULATOR**

Clip-on 27 mm low pressure Propane  
regulator.

30112



**NEW**

**BUTANE GAS REGULATOR KIT**

Kit includes : 1 x 30118 Butane low  
pressure gas regulator; 2 x Hose Clips; 1.5  
x metres of High Pressure Hose

30115



**NEW**

**REGULATORS WITH GAUGE**

Butane & Propane gas regulator with  
gauge.

30180 Butane 29 mbar

30181 Propane 37 mbar



**BARBECUE GAS POINT**

Whale Easi Slide BBQ gas point in  
White.

30021



**BULLFINCH COVER**

Bullfinch cover that locks open or  
closed.

30145







**GAS CONVERTER**

Camping gas bottle converter.

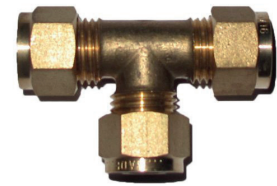
**30134**



**WADE ELBOW**

8 mm (5/16") both ends.

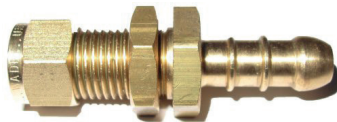
**30127**



**WADE EQUAL TEE**

8 mm (5/16") all ends.

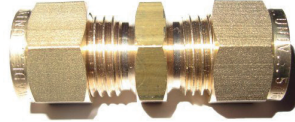
**30135**



**WADE BULKHEAD NOZZLE**

Rubber hose adaptor. 8 mm (5/16").

**30132**



**WADE COUPLING**

Equal-ended coupling. 8 mm (5/16").

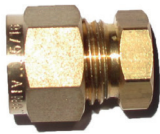
**30131**



**WADE NOZZLE**

Rubber hose adaptor. 8 mm (5/16").

**30147**



**WADE BLANKING END**

8 mm (5/16").

**30142**



**WADE COMPRESSION RING**

Copper. 8 mm (5/16").

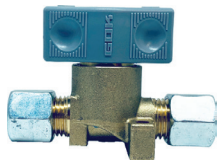
**30141**



**WADE BLANKING PLUG**

8 mm (5/16").

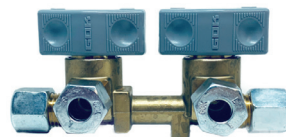
**30133**



**SINGLE GAS ISOLATOR SWITCH**

GOK single gas isolator switch 1 way. 8 mm (5/16").

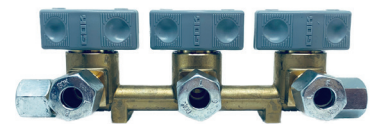
**30200N**



**TWIN GAS ISOLATOR SWITCH**

GOK twin gas isolator switch 2 way. 8 mm (5/16").

**30196N**



**TRIPLE GAS ISOLATOR SWITCH**

GOK triple gas isolator switch 3 way. 8 mm (5/16").

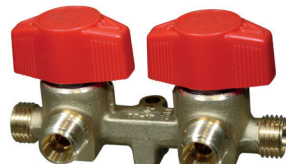
**30201N**



**SINGLE GAS ISOLATOR SWITCH**

Single gas isolator switch 1 way. 8 mm (5/16").

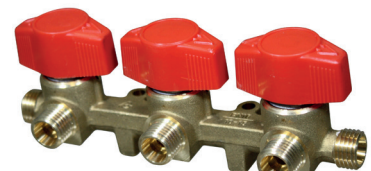
**30200**



**TWIN GAS ISOLATOR SWITCH**

Twin gas isolator switch 2 way. 8 mm (5/16").

**30196**

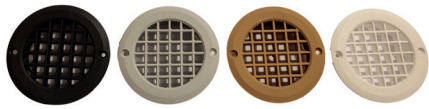


**TRIPLE GAS ISOLATOR SWITCH**

Triple gas isolator switch 3 way. 8 mm (5/16").

**30201**





**SHORT TAIL VENT : 35 MM**

Hard plastic round short tail vents.  
 Ø : 75 mm. Tail length: 10 mm.

- 60029BL**    Black

---

- 60029W**    White

---

- 60029B**    Beige

---

- 60029G**    Light Grey



**DROP VENT : 35 MM**

Hard plastic round short tail vent.  
 Ø : 75 mm.  
 Tail length: 35 mm.

- 60156**    Black

---

- 60155**    Mid Grey



**DROP VENT : 130 MM**

Hard plastic round vent with tail. Ø.  
 75 mm.  
 Tail length: 130 mm.

- 60150**    Mid Grey



**MESH VENT COVER**

Plastic mesh vent cover that fits onto  
 75 mm Ø Vents.  
 Colour: Black . Size: Ø 50 mm ;  
 protrudes approx. 10 mm.

- 60157**



**MPK FRIDGE VENT**

MPK hard plastic vent.  
 Colour: White or Black.  
 Size: 365 x 139 mm (W x H).

- 30508**    White

---

- 30509**    Black



**PLINTH VENT**

A hard plastic vent suitable for  
 internal or external use. Overall  
 size: 312 mm x 86 mm.

- 60160**    Grey

---

- 60161**    Black

# As strong as an Elephant...



As light as a feather...



Available in 3 mm & 15 mm



### LOCKABLE GAS BOTTLE BOX

Exclusive to Grassroutes Leisure.  
Lockable metal gas bottle box. Sealed door and complies with BS EN 1949:2011.



UK MADE

Colour: Black.

These steel gas lockers meet standards and are approved by the NCC when fitted by a qualified person using the correct drop vents and gas manifold (sold separately).

**30153** Small: 240 x 340 x 275 mm (W x H x D)

**30156** Large: 255 x 445 x 300 mm (W x H x D)

### JUBILEE CLIPS

Zinc-plated jubilee hose clips. Supplied in boxes of 10.

**30606** MOO 11-16 mm

**30607** OO 13-20 mm

**30608** OX 18-25 mm

**30609** 2A 35-40 mm



### JUBILEE CLIPS : 143 CLIPS

Mild Steel Jubilee Clips Plastic pack of 143 Clips of the most popular Jubilee clips.

**30610**



### P CLIP KIT

Assorted pack of 110 Jubilee P Clips in covering the most popular sizes.

**30611**

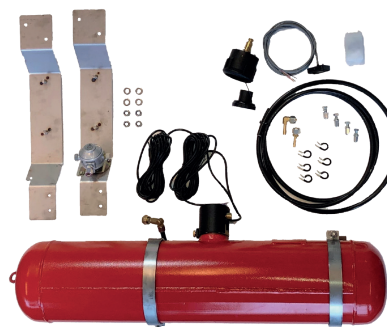
The **GASTORE** under slung tank kits are an advanced way of storing your LPG gas in a leisure vehicle. Ideal for supplying the BBQ, van heating, hot water and cooking appliances.



### VW T5 & T6 LPG TANK KIT

15-litre tank – @ 80% fill holds 12 litres or 6 kg of gas. In-built level gauge; tank brackets (all 316 stainless steel). Includes 1.25-metre fill hose  
Kit weight: 14 kg (dry)  
Mounted to vehicle using 4 x M10 bolts (supplied)  
Kit supplied pre-assembled and pressure tested  
Gas pressure test point on regulator  
CE and R67 approvals – exceed UKLPG Cop11 when installed to instructions

**30255**



### BOXER/RELAY/DUCATO LPG TANK KIT

25-litre tank. Includes 4.5 metre level gauge cable; 4.5 m solenoid cable. Parts include 2 x stainless steel vehicle mount brackets 30mBar Cavagna regulator; through body bayonet fill point with housing; 3 m filler poly hose; 600 mm pigtail; 2 x 8 mm hose connections; 20 mm grommet; electronic solenoid control and level gauge; electrical junction box; 4 x M8 hex rivnuts and bolts; 6 x hose P clips; tank and value certificates/instructions/log card.

**30256**







### PROPEX 240 V WATER HEATER

A new mains-powered hot water heater specifically designed for the caravan and motorhome market and fully compliant with new ErP legislation. This unit allows you to pull up, hook up and switch on to get hot water.

Features include:

- Enamelled steel plate inner tank.
- Ultra-thick, non-CFC polyurethane foam to prevent heat loss and reduce energy costs.
- Sleek, compact design and easy to install.
- Adjustable temperature with multiple protection devices against over heating, over pressure and electricity leakage.

**30804** Size: 400 x 270 x 260 mm 6 litres

**30805** Size: 600 x 270 x 260 mm 10 litres



### PROPEX MALAGA 5E WATER HEATER

A high-capacity water storage heater. The 5E has the benefit of a 750 W electric heating element. It provides a quick and efficient supply of hot water for showering and washing in leisure vehicles.

Main features include:

- 13-litre capacity for longer washing and showering times with electronic control.
- Efficient gas burner for faster warm up times.
- 750 W element.
- Small flue terminal – neat appearance on outside of the vehicle.
- Safe-combustion production are completely sealed from the leisure vehicle interior.
- Easy to fit and service – controls to the rear of the unit.

**30208**



### WHALE EXPANSE WATER HEATER

The Whale expanse water heater has been cleverly designed to maximise living space whilst adding improved functionality.

Features include:

- Rapid heat up, reheat and retention.
- Can run on electric only, gas only or both combined.
- Simplified and easy installation.
- More heat, more control, more space and reduced heat-up times.

**30575** For Internal Fitting

**30157** For External Fitting





## SURECAL 6 LITRE WATER HEATER

**NEW**

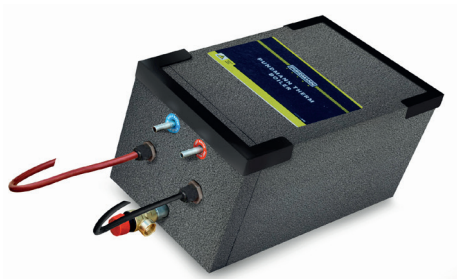
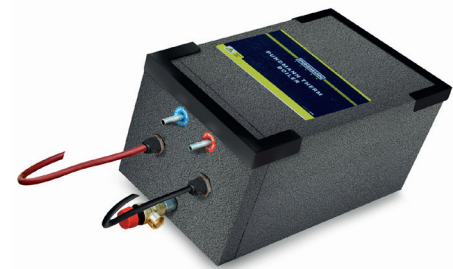
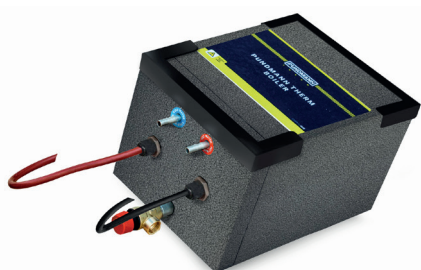
Built in the UK this water heater is made of the finest materials that guarantees excellent performance and reliability. Quick and easy to install. Retains heat up to 24 hours after the immersion has been switched off. Fitted with a thermostatic mixer valve for the safety of those onboard and increases the volume of hot water.

Capacity : 6 litres  
 Dimensions: 245 x 250 x 440 mm (W x H x D)  
 Weight : 8 kg



**30806**

**NEW**



## PUNDMANN WATER HEATERS

These water heaters have been specifically designed for installation in leisure vehicles where there is limited space and weak power conditions. The PUNDMANN TERM boiler is a low pressure boiler that can be connected to any water system with existing fittings in the mobile arena. The connections are designed for a 10 mm hose. The boiler is compact and light. The units are made from high quality stainless steel that meet with drinking water standards. Three Year return to base warranty.

- 30810**    3 litre 24v
- 30811**    3 litre 12/24v
- 30812**    6 litre 12/24v
- 30813**    10 litre 12/24v



**PUNDMANN**  
 WATER HEATERS

**MIKUNI AIRO 2 KW HOT AIR HEATER**

The Airo 2 is a diesel heater that is easy to fit, economical and lightweight with low current consumption. It is fully automatic in operation with a simple rotary control for stepless output from 0.9 kW to full 2 kW. It takes diesel fuel from the vehicle tank via its own fuel pump (supplied in the kit) and delivers it to the heater in precise amounts to give a clean burning, low noise exhaust which exits underneath the vehicle.

**30400** MIKUNI AIRO 2 + Fitting Kit

**FITTING BRACKET**

Underbody fitting bracket for T5/T6

**30472**

**TIMER**

7 Day timer kit for MV AIR02.

**30471**

**PROPEX HS2000**

The HS2000 is a 12 volt/gas hot air heater designed to be fitted to the inside of the vehicle gas/12 volt.

Specification:-

Input: 2.1 kW.

Heat output: 1.9 kW.

Voltage: 12 V or 24 V.

Dimensions: 172 x 100 x 320 mm (W x H x D).

**30209**

**PROPEX HS2000E**

Designed to be fitted to the inside of the vehicle this heater can be fuelled by propane/butane gas or 240V mains electric giving the option of using mains hook up to provide selectable 500 W, 1 kW or 2 kW of heat output.

Specification:-

Heat output: gas 1.9 kW; electric 500 W, 1 kW, 2kW.

Voltage: 12 V or 24 V.

Electric: 230 V AC 50 Hz.

Size: 172 x 100 x 320 mm (W x H x D).

**30375**







### PROPEX HS2800

The Propex HS2800 is a 12 volt/gas hot air heater designed to be fitted to the inside of the vehicle.

Specification:-

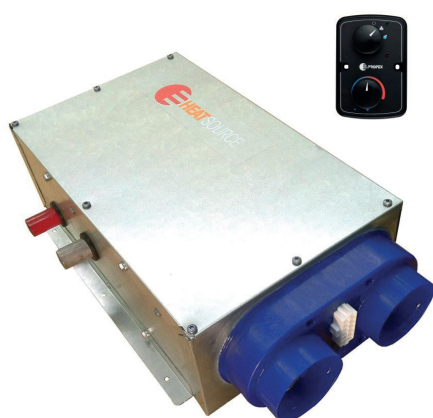
Input: 3.0 kW.

Heath output: 2.8 kW.

Voltage: 12 V or 24 V.

Dimensions: 210 x 120 x 415 mm (W x H x D).

**30215**



### PROPEX HS2211

The Propex HS2211 hot air is designed for mounting underneath the vehicle and ducting directly through the floor into the vehicles interior.

Specification:-

Input: 2.0 kW.

Heat output: 1.9 kW.

Voltage: 12 V DC.

Dimensions: 157 x 230 x 430 mm (W x H x D).

**30210**



### PROPEX HS2212

The Propex HS2212 heater is designed for mounting underneath the vehicle and ducting directly through the floor into the vehicles interior.

Specification:-

Input: 2.0 kW.

Heat output: 2.0 kW.

Voltage: 240 V.

Dimensions: 285 x 181 x 713 mm (W x H x D).

**30386**



### PROPEX DOUBLE OUTLET KIT

For HS 2000 hot air heater.

**30217-2000**





### SARGENT PF200

This charger features short circuit and reverse polarity protection. CHAR and over temperature protection. This unit is suitable for lead-acid batteries.

30195



### SARGENT PX300

A 300W 3 stage intelligent battery charger and power supply.

30194



### STERLING BB1270

12V to 24V DC to DC charger with remote control. See website for more information.

20355



### BLAUPUNKT CHARGER

Smart Charger 170 Multi step battery charger. See Website for more information.

20080

NEW



### STERLING BB1230

This battery to battery charger features four-stage battery charging, OEM lock, pre-set battery chemistry options, customisable profile. B2B turns on at 13.6 V and off at 13.3 V (x2 for 24V). See website for more information.

20350



### ROBERT LEISURE BATTERY CHARGER

UK manufactured intelligent battery charger for leisure vehicles. Features include controlled multi-stage charging, remote LED connection, short circuit and over current protection, high temperature protection. For detailed specification please see our website.

30385 12 Amp

30387 20 Amp



ROBERT-ELECTRICAL



### SARGENT DX3210-12

This DC-DC charger takes power from the vehicle battery and alternator, to provide rapid multi-stage charging of a leisure battery. The battery is more fully charged than using traditional relay systems and any voltage losses in cabling are reduced. An engine running input ensures the charger is compatible with both smart and standard alternators and selector switches provide the optimum charging profile for most battery types. Please see our website for more information.

30297

NEW



### SARGENT AC50X

This control panel has an easy-to-use switch design to control power, entry light, water pump and battery level reader. It does require a separate relay to turn the leisure power on/off. The AC50X is supplied with a dark grey panel as standard. See see 30290PG & 30290PS for additional panels.

30290



### CBE SURROUND PANEL FOR SARGENT AC50X

30290PG Dark Grey

30290PS Silver





### BONUS CP3

The CP3 control panel has 12v distribution with power source selector and an analogue battery meter with 12v outputs fused at 10 amps. If cut out in furniture required then the cut out size is:- 150 x 50 x 60 mm (W x H x D) required for fuse holders and harness/cable attachment to rear of panel. Also 4.8 mm insulated female spade terminals needed for connection on the rear of the panel.

**30294**



### BONUS PMS3

Mains 230 V AC. Battery charger with short circuit, earth leakage and over current protection. The PMS3 is available in either vertical or horizontal models. Features 4 x fused outputs; battery condition metre; battery change over switch and pump isolation switch. Reverse polarity indication. 13.V DC. Fully stabilised power supply. Constant current limit at 12 amp.

Dimensions:

Vertical: 155 x 287 x 150 mm (W x H x D)

Horizontal: 287 x 155 x 150 mm (W x H x D)

**30298** Vertical

**30326** Horizontal



### SARGENT EC160

Sargent EC160 Power Management System  
Available Vertical or Horizontal  
Colour : Silver

**30192** Horizontal

**30193** Vertical



wired for innovation



### SARGENT EC155

The Sargent EC155 is supplied as a kit and is perfect for van conversions. The power unit has a built in 200 watt charger, 12V fuses and 230v breakers. As the unit is surfaced mounted it can provide easy installation with all connectors situated at the bottom of the unit. The kit comprises of:- EC155 PSU; EC50 Control Panel; 12 V & 230 V wiring harnesses; 5 metre connecting lead, for between the PSU and control panel. Supplied boxed and with instructions.

**30292**



wired for innovation

**NEW**



### STERLING INVERTER SIB121600

A 12V 1600W twin socket inverter. Centre tapped earth : interchangeable. New earth bonded : between both. Remote: not included see item 20361. SDimensions : 250 x 1990 x 85 mm (L x W x D). Weight: 2.2 kg.

**20360** Inverter

**20361** Remote Control







### SITE PLUG MALE

European standard 240 V/16 amp 3-pin plug. Used for the connection of the mains hook up lead to the site supply. Packed.

**30230**



### SITE PLUG FEMALE

European standard 240 V/16 amp 3-pin coupler. Used for the connection of the mains hook up lead to the leisure vehicle. Packed.

**30229**



### GWISS HOOK UP ADAPTOR

Surface-mounted European standard 240 V/16 amp 3-pin inlet + protective cap. Packed

**30223**



### CONVERSION LEAD

Mains lead fitted with a site plug to be connected to a domestic 13 amp outlet. Nylon 13 amp fused plug to 16 amp European standard 3-pin coupler. Packed.

**30228**



### CONVERSION LEAD

Mains lead fitted with a site plug to be connected to most continental Schuko-type outlets. A moulded Schuko plug to 16 amp European standard 3-pin coupler. Packed.

**30225**



### BUDGET HOOK UP ADAPTOR

Surface-mounted European standard 240 V/16 amp 3-pin inlet with protective cap. Used as a mains inlet point on leisure vehicles. Packed.

**30223B**



### HOOK UP ADAPTOR

MPK flush-fitting European standard 240 V/16 amp 3-pin inlet with hinged 3 pin connector with splash-proof enclosure (IP44).

**30222W** White See page 95 for  
**30222B** Black spare covers.



### HOOK UP LEADS

Mains extension leads fitted with European standard 240 V/16 amp 3-pin connectors. 2.5 core. Cable to BS6500. Connectors to BS4343, CEE17 and IEC309. Please note: these cables meet current UK electrical regulations and are legal for caravans and other leisure vehicles. Packed.

**30024** 10 metre  
**30029** 25 metre



### HOOK UP ADAPTOR

Compact hook up skin. Flush mounting mains inlet 2-pin and earth connector. 240 V/16 amp. Packed.

**30378W** White  
**30378B** Black



**MAINS TESTER**

Mains tester. Colour: Black  
W4 packed

30227



**8 AMP CABLE**

Two-core twin cable flat.  
2 x 14/0.30 mm  
(2 x 1.00 mm). 30 metres

30270-8



**17 AMP CABLE**

Two-core twin cable flat.  
2 x 28/0.33 mm  
(2 x 2.0 mm). 30 metres

30270-17

**NEW**



**WHALE MAINS OUTLET**

Easi-Slide cover with mains outlet.  
Complete unit. Colour: White

30014



**CIGARETTE LIGHTER SOCKET**

12 V cigarette lighter socket that is  
fixed with 3 x screws. Colour: Black.

30235



**CIGARETTE LIGHTER SOCKET**

12 V threaded cigarette lighter  
socket. Colour: Black. Size: length:  
42 mm; Ø: 29 mm.

30284



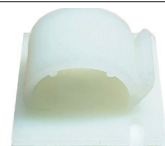
**CONSUMER UNITS**

Consumer unit with RCD (16 amp).  
Available with 1 or 2 trip-outs and test  
button. Colour: White with clear plastic  
hinged cover.

Size (W x H x D)  
1 x trip: 100 x 185 x 105 mm  
2 x trip: 137 x 185 x 105 mm

30187-16a 1 x Trip

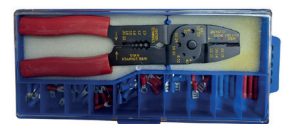
30187-2-16a 2 x Trip



**CABLE CLIP PACK**

Self-adhesive white plastic cable  
clip. Pack of 50. Colour: white.

30648



**CRIMPING SET**

Box contains 1 x crimping plier and  
assorted insulation terminals.

42025

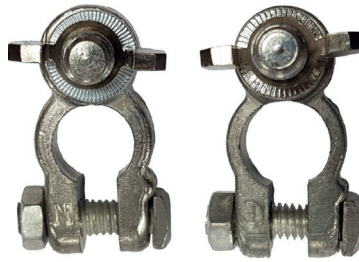
**NEW**



**BATTERY TERMINALS**

Pure brass tin-plated solderless heavy-duty battery terminals. Packed.

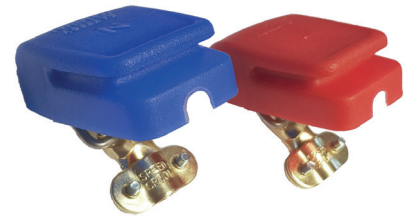
30249



**POST BATTERY TERMINALS**

Heavy-duty post type battery terminals with butterfly nut. Packed.

30248



**SNAP-ON BATTERY TERMINALS**

Snap-on battery terminals. Packed.

30247



**NEW**

**BATTERY TERMINALS**

Battery terminals with cover. Boxed.

30252



**ISOLATOR SWITCH**

Battery isolator switch with cap.

30214 Switch

30281 Spare Key



**ISOLATOR SWITCH COVER**

Whale Easi-Slide cover with isolator switch. Complete unit. Colour: White

30015



**BATTERY RETAINING CLAMP**

Battery retaining clamp. Packed.

30368



**NEW**

**AMPS AL1260 BATTERY**

Designed for the VW T5/T6 this battery's features include a bluetooth interface.

Size : 280 x 172 x 176 mm.

Weight : 8 kg.

5 year warranty.

See website for details.

20380





**SINGLE FUSE HOLDER**

Single-fuse blade holder.  
Colour: White.  
Pack of 5.

**30253-1WPK**



**FUSE HOLDER 4-WAY**

4-way fuse blade holder with bottom entry.  
Colour: Black.

**30253-4**



**FUSE HOLDER 4-WAY**

4-way fuse blade holder with side entry. Colour: Black.

**30253-4S**



**FUSE HOLDER 6-WAY**

6-way fuse blade holder with bottom entry. Colour: Black.

**30253-6**



**FUSE HOLDER 8-WAY**

8-way fuse blade holder with side entry. Colour: Black.

**30253-8S**

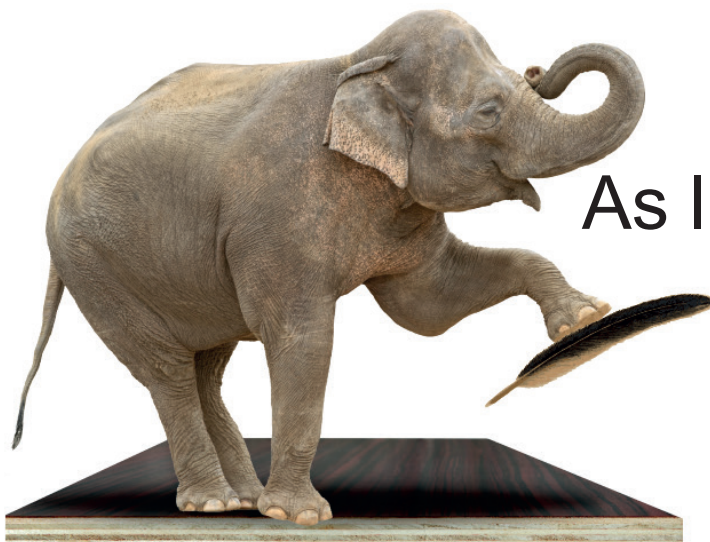


**CONNECTOR STRIP**

Connector strip 15 amp. Bag of 10. Colour: White.

**30300-15**

# As strong as an Elephant...



As light as a feather...



Available in 3 mm & 15 mm



**13 AMP SOCKET**

Berker 13 amp socket.  
Packed. Colour: Anthracite.  
Size: 60 x 60 mm (W x H).

20237



**CIGARETTE SOCKET**

Berker 12-volt cigarette socket.  
Packed. Colour: Anthracite.  
Size: 60 x 60 mm (W x H).

20238



**TV POINT**

Berker 12-volt cigarette & TV socket.  
Packed. Colour: Anthracite.  
Size: 60 x 60 mm (W x H).

20248



**HINGED COVER**

Berker hinged cover. IP44. For use with Berker sockets. Packed. Size: 60 x 60 mm (W x H).

20240 Anthracite

20245 Gloss Black



**BACKING BOX**

Berker surface mounting backing box. For use with Berker sockets. Packed. Colour: Anthracite.  
Size: 60 x 60 mm (W x H).

20247



**BERKER TV/SATELLITE POINT**

Berker TV/satellite socket. Colour: Anthracite. Packed. Size: 60 x 60 mm (W x H).

20239



**SINGLE USB POINT**

Berker single USB port. 12 V. Packed. Colour: Anthracite.  
Size: 60 x 60 mm (W x H).

20243



**TWIN USB POINT**

Berker twin USB port. 12 V. Packed. Colour: Anthracite.  
Size: 60 x 60 mm (W x H).

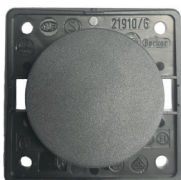
20251



**STEP SWITCH**

Push button switch for electric steps. Packed. Colour: Anthracite.  
Size: 60 x 60 mm (W x H).

20250



**SINGLE ROCKER SWITCH**

Berker rocker switch. Single switch. Packed. Colour: Anthracite. Size: 60 x 60 mm (W x H).

20242-1



**TWIN ROCKER SWITCH**

Berker rocker switch. Twin switch. Packed. Colour: Anthracite. Size: 60 x 60 mm (W x H).

20242-2

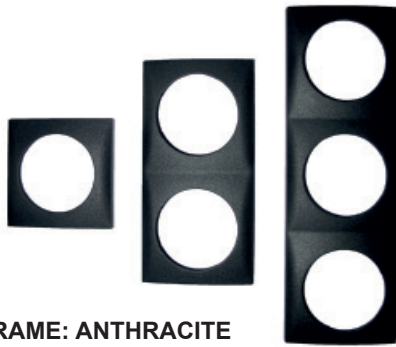


**BACKING BOX**

Berker backing box. Ø : 50 mm. Packed. Colour: Off-White.

20241

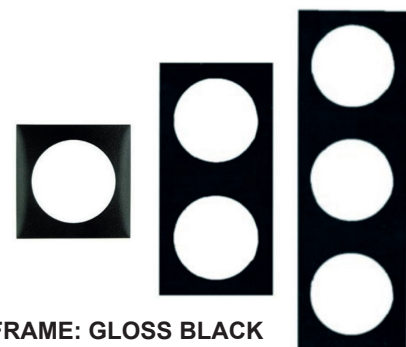




**BERKER FRAME: ANTHRACITE**

Berker FLOW DESIGN frame available in three sizes in anthracite. Packed.

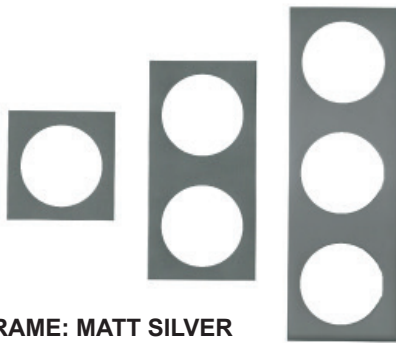
- Single: 60 x 60 mm [20236-1](#) Single
- Double: 60 x 119 mm [20236-2](#) Double
- Triple: 60 x 178 mm [20236-3](#) Triple



**BERKER FRAME: GLOSS BLACK**

Berker FLOW DESIGN frame available in three sizes in anthracite. Packed.

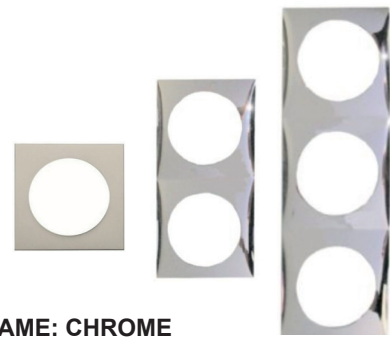
- Single: 60 x 60 mm [20244-1](#) Single
- Double: 60 x 119 mm [20244-2](#) Double
- Triple: 60 x 178 mm [20244-3](#) Triple



**BERKER FRAME: MATT SILVER**

Berker FLOW DESIGN frame available in three sizes in anthracite. Packed.

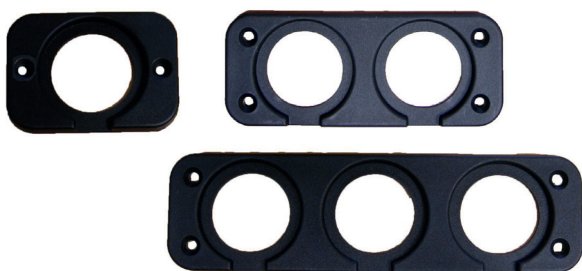
- Single: 60 x 60 mm [20249-1](#) Single
- Double: 60 x 119 mm [20249-2](#) Double
- Triple: 60 x 178 mm [20249-3](#) Triple



**BERKER FRAME: CHROME**

Berker FLOW DESIGN frame available in three sizes in anthracite. Packed.

- Single: 60 x 60 mm [20246-1](#) Single
- Double: 60 x 119 mm [20246-2](#) Double
- Triple: 60 x 178 mm [20246-3](#) Triple



**POWER SOCKET PANELS**

Front panels for power sockets with recess opening such as USB and cigarette lighter sockets. Available in single, twin or triple panels. Colour: Black.

- [20321](#) Single
- [20322](#) Double
- [20323](#) Triple



**PLANT ON HOUSING UNITS**

Plant on housing units for various sockets such as USB and cigarette lighter sockets. Available in single, twin or triple units. Colour: Black.

- [20301](#) Single
- [20302](#) Double
- [20303](#) Triple





### LOOX LED ESC2001 USB CHARGING STATION

This modular USB charger is part of the Loox 12 V plug and play system and is ideal for installation in furniture. The unit can charge two devices at the same time. Seven-year manufacturer guarantee. Includes special connecting lead. Size : Round : Ø 40 mm. Square : 40 x 40 mm. Comes with 0.5 metre cable.

- 20062** Round Matt Black
- 20063** Round Matt Nickel
- 20064** Square Matt Black
- 20065** Square Matt Nickel



### POWERDOCK WITH USB

Powerdock with 2 x 700 mA USB ports. IP54 rated when closed.

Includes: 2.5 m lead with moulded UK plug.

Colour: Black/Aluminium with stainless steel top.

**30409**



### SINGLE USB SOCKET

Screw-in single USB socket with protective cap. 12/24 V DC. USB output: 5 V 2.1 A max DC. Reverse polarity protection. LED power indicator inside. Size: Ø.: 36.8 mm

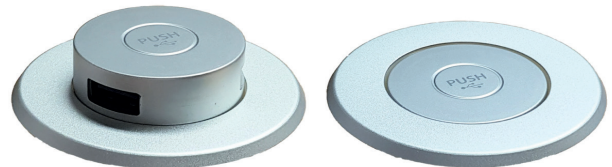
**20311**



### DOUBLE USB SOCKET

Screw-in double USB socket with protective cap. 12/24 V DC. USB output: 5 V 2.1 A max DC. Reverse polarity protection. LED power indicator inside. Size: Ø : 36.8 mm .

**20312**



### SILVER POP-UP USB CHARGER

Ideal for charging devices such as mobile phones or tablets using the socket outlet without an additional charger.

Features include:

2 x USB connectors; 1x 2.05 m lead with connector. Max. 2100 mA output. Includes 2.0 m mains lead with plug.

**30439**



### READING LIGHT WITH USB

12-volt LED 2034 flexible reading light with USB. Available in two colours.

- 20016** Chrome
- 20017** Black



### MINI TUBE WITH USB

This light has a flexible swivel head and built-in USB charging port. The USB charger has an output of 1000 mA @ 5 V.

**20072** Chrome



**NEW**



### MINI TUBE D4 WITH USB

This light has a flexible arm and built in USB charging port. The USB charger has an output of 1000 mA @ 5 V.

**20074** Chrome





**FRILIGHT COMET**  
 Round mounted 12-volt light with on/off switch. Middle of light is directable.  
 Bulb: G4 10 W.  
 External Ø: 82 mm.  
 Colour: Silver Sand.

30357SS



**FRILIGHT NOVA**  
 Round plastic 12-volt light without switch. Available in two colours.  
 External Ø: 77 mm. Bulb: G4 10 W.  
 Colour : Chrome.

20001C



**FRILIGHT VEGA 48 SMD**  
 Recess fitting 18 SMD. 12 V. Easy mounting – no screws. Hole cut-out size 40 mm. Colour: Brushed Stainless Steel rim.  
 Ø.: 48 mm. Depth: 6 mm.

20005



**THIN LED DOWN LIGHTER**  
 Surface mounted. LED grid contains 19 diodes, 1.5 W, 12 V. Light detaches from surround. Can be screwed or stuck to surface (screws and sticky pads included). Approx. 2.5 m of cable. Colour: Matt Silver.  
 Ø: 58 mm. Depth: 6 mm.

30366W Matt Silver

30367 Pack of 3 with Transformer



**NEW**

**FRILIGHT VEGA 75 SMD**  
 LED Matt Chrome light. 12VDC. 1W LED. Size: Ø: 75 mm. Height: 15mm. Touch operated except master.

20093 Touch control

20094 Master



**LED DOWNLIGHT**  
 For recess or surface mounting. Includes 69 mm bezel. LED grid contains 21 diodes. 12 V. 1.4 W. Supplied with 1.5 m lead with connector. Colour: Satin Stainless Steel Finish.  
 External Ø: 69 mm.

30394



**FRILIGHT NOVA 36 SMD**  
 Round plastic 12-volt light for recess fitting without switch. Available in two colours.  
 External Ø : 77 mm.  
 Colour: Chrome.

30338C



**FRILIGHT DOT LED**  
 Dot white LED: 0.15 W.  
 Size : Ø: 13 mm.  
 Colour: Clear.

30356





**FRILIGHT KURS 130 SMD**

SMD mounted light with flexible arm and integrated on/off switch. Arm length: 130 mm. Available in two colours.

- 30365B** Black
- 30365S** Matt Silver



**LOOX READING LIGHT WITH USB**

12-volt LED 2034 flexible reading light with USB. Available in two colours.

- 20016** Chrome
- 20017** Black



**TURNSTRIPE LED 9**

Internal light with aluminium body/plastic lens with rocker switch. 9 bright LEDs, 12 Volt, Surface mounte allowing light to turn  
Dimensions: 220 x 31 x 35 mm (L x D x W)  
Supplied boxed.

- 30376**



**SQUARE RECESSED SPOT LIGHT**

12 V for recess mounting contains 24 diodes. Light output: 114 lm; Efficiency: 64.5 lm/W. Voltage: 12 V; wattage: 1.7 W; with 230 mm cable and 6.3 mm spade connector Finish: chrome. Dimensions: 65 mm x 65 mm; recess: 10.5 mm. Supplied boxed.

- 30396** Chrome



**MINI TUBE WITH USB**

This stainless steel light comes with a flexible swivel head and a built-in USB charging port, making it possible to charge your mobile phone or tablet even if you don't have a 230 V connection within the vehicle. The USB charger has an output of 1000 mA @ 5 V.

- 20072** Chrome



**NEW**

**FLEXIBLE MINI TUBE D4 WITH USB**

This light has a flexible arm and built in USB charging port. The USB charger has an output of 1000 mA @ 5 V.

- 20074** Chrome







**FRILIGHT SOFT WHITE SMD**

For recess or surface mounting. Soft S1 white SMD light with on/off switch. 12 V. Size: W248 x H35 x D64 mm. Colour: White.

20006



NEW



**NIGHTEYE AWNING LIGHT**

A slimline awning light. NightEye 12V White. Available in two lengths with or without sensor.

- 20007 370 mm
- 20008 620 mm
- 20009 370 mm with sensor
- 20010 620 mm with sensor



**LABCRAFT SCENELITE**

A surface-mounted aluminium-based light. Waterproof to IP67. 10-32 V. 10 W. Over 1100 lumens. E-type approval. Supplied boxed. Size: 182.5 x 50 x 20 mm (L x W x D).

- 20032 White (SI8-4-3MVWH)
- 20033 Black (SI8-4-3MV)



**LABCRAFT LED MAP LIGHT (ML2271)**

Slimline design with integrated on/off switch. Very low power. Red and white output. Colour: Black. Supplied boxed.

20054



**LABCRAFT CALLISTO (LD101BCMV)**

6 white 12-volt high-intensity LEDs with a chrome trim. Supplied boxed. Ø: 58 mm.

- 20019 Chrome



NEW



**LABCRAFT VANLITE FOR T5, T6 & CRAFTER (+2017)**

7 times brighter than OEM light using only half the power consumption. Retro fit - quick & easy to install - less than 30 seconds!

20061





**LABCRAFT POWER ASTRO (LL2CW6-0.5)**

Compact, long-life and high-intensity Cree LEDs give a wide spread of light. Waterproof to IP66. Quick to install. Supplied boxed. Colour: White. Size: L343 x D31 x H43 mm.



20024



**LABCRAFT ASTRO (LL2CW500)**

Compact, long-life and high-intensity Cree LEDs give a wide spread of light. Colour: White. Waterproof to IP66. Supplied boxed. Size: L593 x D31 x H43 mm.



20025



**LOOX 12V LED SENSOR LIGHT**

An IP44-rated light suitable for plinths or bed bases. Features an integrated twilight sensor switch that turns the light on when brightness is below 15 lux. Colour : Matt Black or Matt Silver. Other features include:

Integrated motion sensor (delay time approx. 4 minutes).  
 Note: This light is not dimmable.  
 Installation for recess mounting.  
 Number of LEDs: 3 Voltage: 12 V Wattage: 0.3 W.  
 Light colour: warm white (2700 K). Luminous flux: 4 lm  
 Luminous efficacy: 12 lm/W.  
 Energy efficiency class: A+. Sensor range: 0-3000 mm.  
 Ø: 54 mm Depth 15 mm Drill hole: 40 mm.  
 Cable length: 2 m. Guarantee: 7 years.  
 Material: stainless steel and plastic.

- 20034 Matt Black
- 20035 Matt Silver



**LABCRAFT FLUX (F250CW-24)**

A slimline, low-profile design that can be dimmed to 50% brightness. Colour: White. Supplied boxed. Size: L310 x W90 x D10.6 mm. 12 V.



20052



**FLAME 78 SMD**

**NEW**

Brushed steel touch control light. 21 SMD; 12V, 1W. Size: Ø 78 mm. Height : 15 mm. Touch Control except Master.

- 20096 Touch Control
- 20097 Master



**FLAME 88 SMD**

**NEW**

Brushed steel touch control light. 21 SMD; 12V, 1W. Size: Ø 88 mm. Height : 15 mm. Touch Control except Master.

- 20098 Touch Control
- 20099 Master

## LABCRAFT NEBULA

This light has a tough aluminium housing with an integrated on/off switch. It has long-life and high-intensity Cree LEDs. The POWER version (20031) has 6 powerful LEDs offering a more concentrated light output over a shorter span.



Supplied boxed

Colour: Silver with dark grey ends

Size: L367 x W44 x D14.5 mm

**20030** Nebula S15CW500S

**20031** Nebula Power SI-6-0.55



## LABCRAFT APOLLO (SVCW500)

This light has been designed to offer increased light output.

Easy and quick to install. 12 V.

Colour: Clear with white ends

Supplied boxed.

Size: L610 x W37 x D16 mm



**20051** 24 lights



## LABCRAFT ORIZON (LEDCW500PV3)

This low-profile light is quick and easy to install. It is waterproof to IP66 and is E-type approved. It can be fixed using double sided tape.

Size: L522 x W18 x D11 mm.

Size: L522 x W18 x D11 mm.

Size: L522 x W18 x D11 mm.

**20023**



## LED CONTINUOUS STRIP LIGHT KIT

Comprises of:-

1 x 12 Volt Power Lead

5 metres LED2071 Light strip

2 x 2.5 Profile Casing

4 x End Caps

2 x Profile connection Clips

**20075**







**KUMA CONNECT PLAY 4G**

SIM unlocked plat 4g router with indoor PLAY antenna. Insert any SIM card from any provider and share the data at 150 Mbps with up to 32 devices.

Functional, practical, stylish and robust. You can be sure your KUMA 4G router with PLAY antenna will last for many years.

- KUMA CONNECT 4G router with indoor PLAY antenna
- Free data SIM card (200 MB/month data SIM from Three)
- SIM card adapter for different SIM card sizes
- 12 V DC charger for car/vehicles
- 240 V AC power supply unit
- 1 m LAN cable

30787



**KUMA CONNECT PRO 4G**

4G CONNECT LiTE router + 4G LTE roof-mounted PRO antenna. Insert any SIM card from any provider and share the data at 150 Mbps with up to 32 devices. Functional, practical, stylish and robust. You can be sure your KUMA 4G router with PRO antenna will last for many years.

One package contains:

- KUMA CONNECT LiTE 4G router.
- 4G LTE roof-mounted PRO antenna.
- 3M RG174 cable.
- Free data SIM card (200 MB/month data SIM from Three).
- SIM card adapter for different SIM card sizes.
- 12 V DC charger for car/vehicles.
- 240 V AC power supply unit.
- 1 m LAN cable.

30786



**TELECO WI-FI ROUTER WFT420/12E**

This device is ideal for campers, motorhomes and horseboxes. It operates at 12 volt and will transform the amplified 4G - 3G booster signal into a Wi-Fi Source that lets you watch movies or your favourite series on NETFLIX on your tablet or SMART TV without any annoying interruptions.

Technical Specifications:-

- Reception Frequency:- GSM: 900/1800 MHz.
- 3G-UMTS: 2100/900 MHz.
- 4G-LTE0(B20), 900(B8), 1800(B3), 2100(B1), 2600(B7) MHz.
- SIM Card Ready (SIM Card not included).
- 1 Ethernet Port.
- LTE Category 4 Wireless CPE. Excludes SIM Card & Antenna.

30790 WFT402/12E

30792 Wall Fixing Bracket



**TELECO EXTERNAL GSM ANTENNA**

The Teleco External GSM Antenna TA095 goes with 30790 Teleco WFT402/12E Router.

30791

**SONY XS-FB1330 SPEAKER**

Tuned for MEGA bass, 240 W peak power, 35 Watt, 3 Way coaxial speakers with MRC woofer and high-performance power handling. Extra-bass, full range speakers optimised for matching Sony receivers. Sold in pairs. Size: 13 cm.

20085

**SONY****KENWOOD KFC-S1366**

Stage sound series, 2 way, 260 W Peak Power, 30 watt RMS pair of flush mount speakers. Size : 13 cm.

20081

**KENWOOD****AUTOSOUND AS109 DUAL CONE SPEAKERS**

Pair of 4" x 6" dual-cone loudspeakers, including grilles, cable set and mounting hardware.

75 watts max power, 25 watts nominal power handling. Impedance 4Ω. Frequency response 90 – 20,000 Hz. Sensitivity 85 dB. Cone material injected PP.

20087

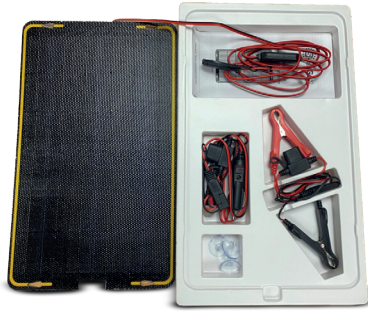
**AS**  
MOBILE SOLUTIONS**AUTOSOUND ASX542**

One pair of 13 cm two way co-axial loudspeakers including grille, cable set, mounting hardware and installation instructions.

200 watt max power, 50 watts nominal power handling, Impedance 4Ω. Frequency response 70 – 20,000 Hz. Sensitivity 91dB. Cone material injected PP.

20086

**AS**  
MOBILE SOLUTIONS

**SOLARGO2 PANEL KIT**

12W Solar Panel Kit with 12 V battery charger with regulated charge control. Perfect for leisure vehicles. 12v lead acid batteries. Waterproof to IP65. Built-in Charge controller - prevents battery overcharging. Compact size 223 x 370 x 3 mm. Pack include:-

4 Suckers for window mounting; 3 fused connector cables; crocodile clips; car accessories plug. Ring Terminal.

20020

**FLEXIBLE SOLAR PANEL KIT FOR VANS**

Semi Flexible 110 Watt.

Complete kit including Victron Charge Controller. Excellent for van roofs.

20018

**TELECO SOLAR PANEL KIT 12 VOLT**

Teleco Solar Panel Kit - an all-in-one solution to your Solar panel needs. The kit comprises of:-

1x TSP 100 Alucrystal solar panel; 1x 10amp charge regulator (SPC10/1). Solar panel fixing kit - 4 ABS feet and spoiler for quick panel fixing and self tapping screws. 1x SPCA/TSP-Aluminium cable guide through roof; 6 Metre extension cable; 1x Fixing/cleaning kit.

Dimensions: 1195 x 550 x 40 mm. Weight 7.75 kg.

20015

**SARGENT SOLAR PANEL KIT**

The 100 watt panel is designed for use on motor homes and caravans and are ideal for keeping your batteries topped up during storage and providing usable power during the day. This 100 Watt panel is supplied with:-

100 Watt mono crystalline panel (with pre-fitted feet). Matching Sargent regulator. It is recommended a polyurethane adhesive sealant is used.

Dimensions: 1170 x 534 x 35 mm. Weight : 8.5 kg.

20014

**NEW****TELAIR SOLAR PANEL KIT FOR LARGE VANS**

TelAir Solar panel kit. This panel has PERC cells (passivated emitter & Rear cell), which exploit light reflection and improve conversion efficiency due to a dielectric lay on the rear side. Kit comprises of:- Black Mono Crystalline Solar Panel; 6 metres of cable; feet and spoiler. Size: 1230 x 705 x 30 mm (L x W x H). Weight : 10 kg. Ideal for Ducato size vans.

20011 TBS185WS





## T CONNECTOR

Colour: White. Size: 12 mm (1/2"). Packed.

**30168S**



## T CONNECTOR

Bag of 5. Colour: White. Size: 19 mm (3/4").

**30168-19mm**



## STRAIGHT CONNECTOR

12 mm x 12 mm (1/2" x 1/2") straight connector.

Colour: White. W4 packed

**30169S**



## Y CONNECTOR

Bag of 1. Size 12 mm (1/2") Colour: White Packed.

**30167S**



## ELBOW

Plastic elbow. Colour: Black. Size: 12 mm (1/2"). W4 Packed.

**30165S**



## STRAIGHT CONNECTOR

Straight connector that converts 1/2" soft hose to 12 mm hard pipe. Colour: Blue.

**30369**



## WATER TANK CONNECTOR

Robust water tank connector. Colour: Black Outlet Size : Ø : 12 mm (1/2")

**30170**



## ELBOW HOSE TAIL 3/4"

Plastic elbow. Colour: Black.

**32096**



## ELBOW HOSE TAIL 1/2"

Plastic elbow. Colour: Black.

**32097**



## SUBMERSIBLE PUMP FITTING KIT

Colour: Black. Size: 1/2".

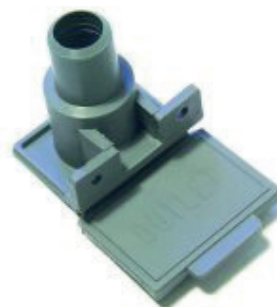
**32098**



## HOSE INLET SOCKET

Robust plastic hose inlet socket. Colour: Grey. Size: Ø : 12 mm

**30174**



## HOSE OUTLET SOCKET

Robust plastic hose outlet socket. Colour: Grey. Size: Ø 19 mm

**30172**



## STRAIGHT CONNECTOR 3/4"

Straight Tank Connector 3/4" includes nut.

**32094**

## Y CONNECTOR 3/4"

Y Tank Connector 3/4" includes nut.

**32095**





**EQUAL TEE**

Plastic push-fit equal tee. Packed.  
Colour: Black.  
Size: 12 mm.

32040



**ELBOW**

Plastic push-fit elbow. Packed.  
Colour: Black.  
Size: 12 mm.

32041



**STRAIGHT CONNECTOR**

Plastic push-fit straight connector.  
Packed. Colour: Black.  
Size: 12 mm.

32042



**FEMALE ADAPTOR**

Plastic push-fit female adaptor.  
Packed. Colour: Black.  
Size: 1/2" BSP to 12 mm.

32043



**STRAIGHT ADAPTOR**

Plastic push-fit. Packed.  
Colour: Black.  
Size: 12 mm to 1/2" flexible.

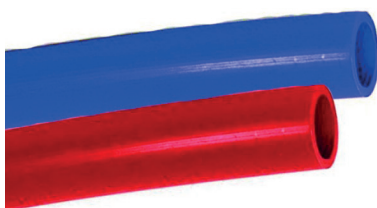
32044



**TWO-WAY ADAPTOR**

Plastic push-fit. Packed. Colour: Black.  
Size: 12 mm.

32046



**WATER PIPE – PUSH FIT**

Plastic push-fit water pipe. Available for hot (RED) or cold water (BLUE). Two roll sizes available (10 or 25 metres). Size: Ø 12 mm.

30018-10 Cold 10 m roll

30018-25 Cold 25 m roll

30019-10 Hot 10 m roll

30018-25 Hot 25 m roll



**SHUT-OFF VALVE**

Plastic push-fit shut-off valve.  
Packed. Colour: Black/Blue.  
Size: 12 mm.

32045



**STRAIGHT ADAPTOR**

Plastic push-fit two-way adaptor.  
Packed. Colour: Black.  
Size: 12-15 mm.

32047



**FEMALE ADAPTOR ASSEMBLY**

Plastic push-fit female adaptor assembly. Packed. Colour: Black. Size: 3/8" female to 12 mm.

32048

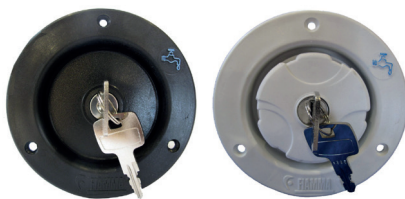




**MPK WATER FILLER**

Locking filler cap complete with keys. Available in Black or White. Size: Ø 40 mm,

- 30128** Black
- 30140** White



**FIAMMA WATER FILLER**

Locking filler cap complete with keys. Available in Black or White. Size: Ø : 40 mm.

- 30126** Black
- 30125** White



**P CLIPS**

White plastic P clips available in five sizes. Pack of 10.

- 30272-6mm**
- 30272-16mm**
- 30272-19mm**
- 30272-25mm**
- 30272-31mm**



**FRESH WATER SIGN**

Single self-adhesive fresh water sign. Colour: Blue/White. Size: W60 x H55 mm.

**71001**



**3/4" SINK WASTE**

Sink waste, including plug. Available straight or angled. Colour: Grey/White. Size: Ø : 3/4" .

- 30346** Angled
- 30349** Straight



**1 1/4" TO 3/4" SINK WASTE**

Sink waste, including plug available straight or angled. Colour: Grey/White. Size: 1 1/2" to 3/4" .

- 30347** Angled
- 30348** Straight



**RATCHET PIPE CUTTER**

6-44 mm PVC ratchet pipe cutter.

**42004**



**FLOOR SEALS - PACK OF TEN**

A range of floor seals ideal for stretching round pipes and cables to leave an attractive finish.

**Black**

- 60170** 5-11 mm
- 60171** 10-19 mm
- 60172** 19-28 mm

**Mid Grey**

- 60180** 5-11 mm
- 60181** 10-19 mm
- 60182** 19-28 mm

**REINFORCED WATER PIPE**

Non-toxic flexible hose. Available for hot (RED) and cold (BLUE) water.

Sold in 15 or 30-metre rolls. Size : 1/2" bore x 1/8" wall.



- 30173** Red - 30 m roll
- 30176** Blue - 30 m roll

**CONVOLUTED HOSE**

Flexible waste hose. Colour: Black. Available in 15 or 30 metre rolls. Size: Ø 20.5 mm or 40 mm.



- 30597** 20.5 mm 15 m roll
- 30598** 40 mm 15 m roll
- 30177** 20.5 mm 30 m roll





**COMET GEO INLINE OUTSIDE**

Inline outside 12-volt water pump. 19 litres/minute. Power: 15-25 W. 1-metre cable. Size: 150 x 42 mm (H x Ø.).

**30081**



**COMET GEO INLINE**

Inline 12-volt water pump. 15 litres/minute. Power: 15-25 W. 1-metre cable. Size: 150 x 42 mm (H x Ø.).

**30080**



**COMET VIP PLUS**

Immersion 12-volt water pump. 20 litres/minute. Power: 35-45 W. 1-metre cable. Size: 123 x 48 mm (H x Ø.).

**30079**



**COMET ELEGANT**

Submersible 12-volt water pump. 10 litre/minute. Power: 10-18 W. 1-metre cable. Size: 123 x 48 mm (H x Ø.).

**30078** 12 V

**30082** 24 V



**WHALE GP1002**  
Standard Pump 10 litres/min 12v. Size: 115 x 36 mm (H x Ø.).

**30016**



**WHALE GP1352**  
12 v Premium pump 13 litres/min Size: 129 x 36 (H x Ø.).

**30017**



**WHALE GP1652**  
High flow pump 16 litres/min 12v Size: 129 x 36 mm (H x Ø.).

**30020**



**FIAMMA AQUA 8**

Self-priming 12-volt water pump. Will pump vertically over 3 metres without priming. 7 litres/minute, 1.5 bar. Absorption 3.4a. Weight: 1.37 kg. Size: 160 x 130 x 225 mm (W x H x D).

**30076-7** 7 Litres

**30076-10** 10 Litres



Aqua F -10 litre



Aqua F -13 litre

**FIAMMA AQUA F**

Self-priming diaphragm pump with four chambers for potable water designed for a constant and high flow. Equipped with innovative inner membrane made from a single piece to ensure a watertight seal. Also features an anti-vibration base, brass pressure switch with fixed calibration and external filter for easy maintenance. Enhanced motor with high efficiency to ensure high capacity with low power consumption. Can be installed in any position and can run dry without damage.

**30073** 10 Litres (Excludes Pipe Fittings)

**30071** 13 Litres (Includes Pipe Fittings)



**FIAMMA EXPANSION TANK A20**

Suitable for all pressure switch pumps. Eliminates the pulsating operation of pressure switch pumps and supplies a constant flow of water, reducing water and electrical consumption.

**30318**



**WHALE WATER MASTER SYSTEM: EP1612**

A simple way to couple water and electrical connections for the submersible pump to outside water containers. Pump and socket can be disconnected for travelling. 12 V. For use with **33002** Whale water master socket (ES1001). Supplied boxed.

**33003**



**WHALE WATER MASTER SOCKET: ES1001**

For use with **33003** Whale water master system.

**33002**



## JERRY CAN : 12 LITRES

Suitable for fresh water.  
Capacity: 12 litres.  
Size: 425 x 260 x 125 mm (W x H x D).  
Opening: 80 mm.

**32022**



12L



## JERRY CAN : 20 LITRES

Suitable for fresh water.  
Capacity: 20 litres.  
Size: 370 x 315 x 260 mm (W x H x D).  
Opening : 80 mm.

**32024**



20L



## JERRY CANS : 5, 10 & 25 LITRES

Robust jerry can available in a choice of three sizes:

5 litre: 150 x 258 x 200 mm (W x H x D). Opening : 40 mm.  
10 litre: 192 x 327 x 235 mm (W x H x D). Opening : 40 mm.  
25 litre: 242 x 466 x 315 mm (W x H x D). Opening : 50 mm.

- 30092** 5 litres
- 30091** 10 litres
- 30090** 25 litres



5L

10L

25L

## JERRY CAN TAP

Wide nozzle.

Available in two sizes: DIN51 & DIN61.

- 30097** DIN51 for **30091/30092**
- 30098** DIN61 for **30090**



## JERRY CAN : 10 & 20 LITRES

Robust jerry can with filling nozzle available in two sizes and with different accessories.

Approx. size:  
10 litre: 265 x 360 x 145 mm (W x H x D). Opening : 35 mm.  
20 litre: 330 x 435 x 190 mm (W x H x D). Opening : 35 mm.

- 32010** 10 litres
- 32020** 20 litres



10L

20L



23L

**WASTE WATER TANK : 23 LITRES**

Black wastewater tank.  
Capacity: 23 litres.  
Size: 425 x 330 x 210 mm (W x H x D).  
Openings : 50 mm.

30089



23L

**FRESH WATER ROLL TANK**

Fiamma roll tank with metal fold-down handle. Total extended height : 1000 mm. Weight: 3 kg. Capacity: 23 litres. Size: 330 x 250 x 500 mm (W x H x D). Opening : 70 mm.

30146



23L

**WASTE WATER ROLL TANK**

Fiamma wastewater roll tank with metal fold-down handle. Total extended height : 1000 mm. Weight: 3 kg. Capacity: 23 litres. Size: 330 x 250 x 500 mm (W x H x D). Opening : 70 mm.

30144



24L

**WHEEL ARCH TANK : 24 LITRES**

Robust wheel arch 24-litre tank.  
Weight : 2.3 kg. Size: 750 x 510 x 150 mm (W x H x D).

32070 Tank

32071 Fitting Kit



25L

**WATER TANK : 25 LITRES**

Water tank with 4 inch plain lid.  
Weight : 2.8 kg. Size: 260 x 420 x 340 mm (W x H x D).

32060



28L

**TOWER WATER TANK : 28 LITRES**

Water tank with 4 inch plain lid.  
Weight : 3 kg. Size: 200 x 620 x 270 mm (W x H x D).

32061



36L

**WATER TANK : 36 LITRES**

Water tank with 6 inch lid. Weight 3.2 kg  
Size : 435 x 380 x 290 mm (W x H x D).

32062



NEW



40L

**WHEEL ARCH TANK : 40 LITRES**

Flat water tank. Weight: 4.4 kg. Size: 160 x 760 x 370 mm (W x H x D)

32081



NEW



51L

**FLAT WATER TANK : 51 LITRES**

Flat water tank with 5 inch plain lid.  
Size: 400 x 120 x 1200 (W x H x D).

32080





57L

**WHEEL ARCH TANK : 57 LITRES**

Wheel Arch Tank. Weight 6.5 kg. Size: 750 x 500 x 360 (W x H x D).

- 32075** Tank
- 32076** Fitting Kit



60L

**FLAT WATER TANK : 60 LITRES**

Flat water tank with 5 inch plain lid. Weight 5.5 kg. Size: 435 x 380 x 290 mm (W x H x D).

**32063**



69L

**WATER TANK : 69 LITRES**

Underslung water tank made for the VW T5/T6 supplied with fitting kit. Weight 9 kg. Size : 1240 x 190 x 600 mm (W x H x D).

**32077**



70L

**WATER TANK : 70 LITRES**

Stackable water tank with fittings. Size: 700 x 240 x 470 mm (W x H x D). Opening 150 mm.

- 30088** Tank
- 30085** Spare seal for red cap
- 30087** Spare red cap & seal.



74L

**WATER TANK : 74 LITRES**

Robust water tank manufactured by Grassroutes Leisure in the UK. Will require venting. Capacity: 74 litres. Size: 700 x 245 x 475 mm (W x H x D). Opening : 150 mm.

- 30095** Blue
- 30095C** White



75L

**FLAT WATER TANK : 75 LITRES**

Flat water tank with 8 inch internal plain lid. Weight: 6 kg. Size: 595 x 350 x 445 mm (W x H x D).

**32064**



90L

**WATER TANK : 90 LITRES**

Underslung water tank for Crafter MAN/TGE (LWB/XLWB). Not suitable for MWB. Fits drivers side only.

- 32079** Tank
- 32102** Fitting Kit Front Wheel Drive
- 32103** Fitting K 4 Wheel Drive



95L

**FLAT WATER TANK : 95 LITRES**

Flat water tank with 5 inch plain lid. Weight: 8 kg. Size: 615 x 345 x 500 mm (W x H x D).

**32065**



100L

**WHEEL ARCH TANK : 100 LITRES**

Black wheel arch water tank with 5 inch lid. Weight: 11 kg. Size : 10909 x 680 x 360 mm (W x H x D).

- 32078** Tank
- 32100** Fitting Kit



**FLAT WATER TANK : 105 LITRES**

Flat water tank with 5 inch plain lid.  
Weight: 9 kg. Size: 745 x 300 x 495 mm (W x H x D).

**32066**



**FLAT WATER TANK : 125 LITRES**

Flat water tank with 8 inch internal plain lid. Weight : 10 kg. Size: 1050 x 330 x 460 mm (W x H x D).

**32067**



**UNDERSLUNG TANK : 180 LITRES**

180 litre Underslung Water Tank for Crafter/MAN TGE. Weight : 6.5 kg. Size: 1260 x 230 x 1600 (W x H x D).

**32072** Tank

**32101** Fitting Kit



**WATER TANK CONNECTOR**

Water tank connector. Colour: Black.  
Outlet Size : Ø : 12 mm (½”).

**30170**



**ELBOW HOSE TAIL ¾”**

Plastic elbow.  
Colour: Black.

**32096**



**ELBOW HOSE TAIL ½”**

Plastic elbow.  
Colour: Black.

**32097**



**SUBMERSIBLE PUMP FITTING KIT**

Colour: Black.  
Size: ½”.

**32098**



**WATER TANK PIPE FITTING KIT**

Includes 1 x 90° x 40 mm filler 2 x vent hose tail (½”). 2 x back nut (½”). 2 x washer/gasket (½”). 1 x vent (¾”).

**32099**



**¾” STRAIGHT TANK CONNECTOR**

Straight Tank Connector ¾” includes nut.

**32094**



**¾” Y TANK CONNECTOR**

Y Tank Connector ¾” includes nut.

**32095**



**WATER TANK : FITTING KITS**

**32071** For 32070 24 litre tank

**32076** For 32075 57 litre tank

**32100** For 32078 100 litre tank

**32101** For 32072 180 litre tank

**32102** For 32079 Front Wheel Drive

**32103** For 32079 4 Wheel Drive



**LED WATER LEVEL INDICATOR**

With one push of the test button, you are able to monitor the water levels of one tank.

There is no need to wire in a 12-volt supply as the LED indicator gauge comes complete with its own battery, which is easily replaced when the need arises.

The water gauge measures only 65 x 65 x 16 mm (H x W x D) so it is small enough to fit any application.

The gauge can be matched with the sender probe below.

20045



**LCD WATER LEVEL INDICATOR**

These new technology gauges have a coloured LCD analogue display with LED backlighting for crystal clear viewing. Five levels are displayed.

A 12-volt supply is required. These gauges only draw 50 mA so they can be left on without flattening your on-board battery. There is a power on/off switch to turn the gauge off when the caravan is not in use. Dimensions: 108 x 108 x 20 mm (H x W x D). The gauge can be matched with the sender probe below.

20046



**WATER TANK SENDER PROBE (5 M LEAD)**

This easy-to-fit tank sender probe only requires one 22 mm (7/8") hole in the side of the tank and suits tanks from 100 mm to 280 mm (4" to 11") deep.

The sender probe is sealed by a special grommet which is compressed in the hole when the nut is tightened and measures the water level by contact with the five sensors along the arm. It has no moving parts.

20047



**NEW**



**PROGRAMMABLE WATER TANK GAUGE**

Programmable LED/LCD water tank indicator. Comes preprogrammed to suit standard sender and 180/200 mm deep tanks. LED is battery operated. LCD is 12V operated.

20073 Single LED      20105 Single LCD

20079 Double LED      20106 Double LCD

**PROGRAMMABLE SENDER CABLE**

Durable cable designed specifically for the programmable range. Easy 'plug & play' installation. Available in 3 lengths. waterproof with IP67 rating..

20066      2.5 metre

20067      5.0 metre

20068      7.5 metre



**PROGRAMMABLE SENDER PROBE**

Two lengths available. For use in fresh and grey water tanks. Self sealing grommet : No messy, toxic glues!

20088      up to 280 mm

20089      up to 700 mm







**THETFORD PORTA POTTI 335 QUBE**

Manual piston pump. 10-litre flush water tank.

Fitted with integrated pour-out spout. 10-litre waste holding tank. Level indicator.

Colour: White.

Size: 342 x 313 x 382 mm (W x H x D).

**30311**



**DOMETIC 972G**

Portable toilet with 360° pressurised flush.

8.7-litre flush water tank. 9.8-litre waste tank.

Weight: 5.4 kg. Colour: White/Grey.

Size: 333 x 317 x 387 mm (W x H x D).

**30324**



**FIAMMA BI-POT 30**

A simple, compact, strong and self-contained fresh water flush portable toilet.

Colour: White.

Upper tank capacity: 10 litres.

Lower tank capacity: 11 litres.

Weight: 4.1 kg.

Size: 360 x 300 x 440 mm (W x H x D).

**30340**



**FIAMMA BI-POT 34**

A simple, compact, strong and self-contained fresh water flush portable toilet.

Colour: White.

Upper tank capacity: 15 litres.

Lower tank capacity: 13 litres.

Weight: 4.6 kg.

Size: 360 x 340 x 430 mm (W x H x D).

**30086**



**FIAMMA BI-POT 39**

A simple, compact, strong and self-contained fresh water flush portable toilet.

Colour: White

Upper tank capacity: 15 litres.

Lower tank capacity: 20 litres.

Weight: 4.6 kg.

Size: 360 x 390 x 430 mm (W x H x D).

**30341**



### THETFORD C402C

Cassette toilet. This bench model toilet features an integrated flush water tank, waste holding tank and warning indicator. Supplied boxed.

- Electric touch-button flush.
- Waste holding tank on wheels.
- LED display when waste tank full.
- Integrated pour-out spout.
- 19.3-litre waste capacity.
- 15-litre freshwater tank capacity.
- Colour: White.
- Size: 670 x 512 x 400 mm (W x H x D).
- Weight: 8.8 kg.
- Available RH or LH (waste tank access).

Please note: external access door is NOT included. See item [30303D](#).

[30306](#) Left hand model

[30307](#) Right hand model

[30303D](#) Access door



### THETFORD C223CS CASSETTE TOILET

This Thetford cassette toilet features the patented Thetford swivel bowl that can be turned freely over 180° to allow maximum installation options. It has a 12 V flush that plumbs directly into the cold water feed.

Features include:

- Handle and wheels fitted to the cassette.
- Increased seating height.
- Bigger, deeper bowl.
- Service door can be fitted horizontally or vertically (optional extra).
- Waste holding tank capacity: 18 litres.
- Size: 394 x 534 x 580 mm (W x H x D).
- Seat height: 492 mm.
- Colour: White.
- Weight: 7.2 kg.

Please note: external access door is NOT included. See item [30303D](#).

[30441](#) Thetford C223CS

[30303D](#) Access door



### THETFORD C224CW CASSETTE TOILET

This Thetford cassette toilet features the patented Thetford swivel bowl that can be turned freely over 180° to allow maximum installation options. It has its own 9-litre flushing tank and has a manual flush that plumbs directly into the cold water feed.

Features include:

- Handle and wheels fitted to the cassette.
- Increased seating height.
- Bigger, deeper bowl.
- Service door can be fitted horizontally or vertically (optional extra).
- Waste holding tank capacity: 18 litres.
- Size: 394 x 727 x 580 mm (W x H x D).
- Seat height: 492 mm.
- Colour: White.
- Weight: 8 kg.

Please note: external access door is NOT included. See item [30303D](#).

[30442](#) Thetford C224CW

[30303D](#) Access door



**CORNER WASH BASIN**

This corner wash basin is made from plastic and fits into the work surface.

Colour: White

Size: 280 x 105 x 280 mm (WxHxD)

**32002**



**CLEO VANITY UNIT**

White plastic vanity unit to match tip-up wash basin **32000**. Colour: White. Size: 520 x 660 x 100 mm (WxHxD)

**32001**



**CLEO TIP-UP WASH BASIN**

A white plastic tip-up wash basin to match vanity unit **32001**. Colour White. Size: 520 x 660 x 150 mm (WxHxD)

**32000**



**VANITY UNIT**

This white vanity unit is designed for use with the Thetford C402C toilet and matches **32031**. Colour: White. Approximate size: 670 x 614 x 172 mm (WxHxD)

**32030**



FOR TAP  
OPTIONS  
SEE PAGE  
90 - 91



**CONTESSA VANITY UNIT**

A white vanity unit to match the Thetford C402C cassette toilet and the Contessa wash basin. Colour: White. Size: 670 x 530 x 130 mm (WxHxD) \*\* New Design \*\*

**30093**



**TIP-UP WASH BASIN**

This white tip-up wash basin is for use with the Thetford C402C toilet and matches **32030**. For tap use **70020**.

Approximate size: 670 x 875 x 190 mm (WxHxD)

For shower tray, see item **30302** or **30299**

**32031**

**CONTESSA TIP-UP WASH BASIN**

A white tip-up wash basin to match the Thetford C402C cassette toilet and the Contessa vanity unit. For tap, use item **70020**. Colour: White.

Approximate Size:  
670 x 870 mm (W x H)

**30099**

For shower tray, see item **30302** or **30299**







**32003**



**32012** - To fit new C200 toilets - see page 87



### SHOWER TRAY & THETFORD RECESS PANEL

A white plastic shower tray and Thetford recess panel that have been designed to be used with the Thetford C-200 fixed toilet models. They will finish off any washroom to a high & neat standard. Colour: White.

Shower tray size: 690 x 90 x 580 mm (W x H x D).  
Thetford recess size: 690 x 600 mm (W x D).

**32003** Shower tray

**32012** Recess panel

For Shower raisers see page 91.



### FLAT SHOWER TRAY

White plastic shower tray designed for use with the Thetford C402C toilet.

Size: 670 x 115 x 670 mm (W x H x D).

**30299**

### SLOPING SHOWER TRAY

White plastic shower tray designed for use with the Thetford C402C toilet.

Size: 670 x 115 x 670 mm (W x H x D).

**30302**



### THETFORD C223/C224 SHOWER TRAY

Shower tray for C223/C224 Thetford Toilets.

Size: 1160 x 695 mm (W x D).

**30295** Left hand

**30296** Right hand

### 1½" TO ¾" SINK WASTE

Sink waste, including plug available straight or angled. Colour: grey/white. Size: 1½" to ¾".

**30347** Angled

**30348** Straight



### ¾" SINK WASTE

Sink waste, including plug available straight or angled. Colour: grey/white. Size: Ø : ¾" .

**30346** Angled

**30349** Straight





**COMET PARMA SHORTY SHOWER TAP**

Hot & cold trigger shower with short spout and microswitch. Retractable metal shower hose approx. 900 mm. Colour: Chrome. Connection: pipe/nylon flexible 250 mm 1/2" barbed hose tail. Thread/mounting hole: 35 mm. Usable hose length 900 mm. Packed.

70020



**COMET ROMA SHOWER TAP CHROME**

Hot and cold single-lever plastic shower mixer tap with retractable shower hose. Usable hose length 1170 mm.

70003

Roma Shower Tap

70200

Replacement Shower Head



**WHALE EASI-SLIDE SHOWER HOSE**

For use with Easi-slide water outlet 30023. With push down hold button. Hose length : 2540 mm.

30037



**EASI-SLIDE WATER OUTLET**

Whale Easi-Slide cover with water outlet. Complete unit. Colour: White. Packed.

30023



**EXTERNAL SHOWER POINT**

Bullfinch external shower point with 1.5 m hose and swivel head. Colour: White. Packed.

30182

White

30185

Black



**ELEGANCE SHOWER RT2500**

Whale Elegance shower mixer tap with flexible hose approx. 1200 mm in length. Designed for use with manual or electric pump supply systems. Connects to Whale quick connect 12 mm pipework or 1/2" hose connection. Colour: White. Packed.

70205



**COMET FLORENZA SHOWER TAP**

Mixer shower with threaded outlet for shower hose with microswitch. Ideal for external showers. Colour: Chrome. Connection: nylon flexible 350 mm 1/2" barbed hose tail. Thread/mounting hole: 1". Outlet: shower connection 1/2". Packed.

70202





**ROMA SHOWER HEADS**

Comet Roma replacement shower heads for items **70001** and **70003**.

- 70200** Chrome
- 70201** White



**TOP DOOR**

Thetford toilet C200-CW top water filler door.

**30620**



**TOILET WASTE DOOR**

Thetford toilet waste door with Zadi lock and keys.

**30303D**



**SHOWER RAISER**

Plastic chrome-coloured shower raiser. Rail can be cut down. Length: 630 mm.

Colour : Chrome.

**70011**



**SHOWER RAISER**

Plastic/metal shower raiser. Rail can be cut down. Length: 660 mm.

Colour: White/Chrome.

**42009**



**SHOWER HEAD/HOSE**

Bullfinch shower head assembly.

Colour : White.

**30184**



**FLEXIBLE HOSE**

Flexible shower hose. 1/2" BSP. Length 1.5 metres

Colour : Chrome.

**42011**

**1 1/2" TO 3/4" SINK WASTE**

Sink waste, including plug available straight or angled. Colour: grey/white. Size: 1 1/2" to 3/4".

- 30347** Angled
- 30348** Straight



**3/4" SINK WASTE**

Sink waste, including plug available straight or angled. Colour: grey/white. Size: Ø : 3/4".

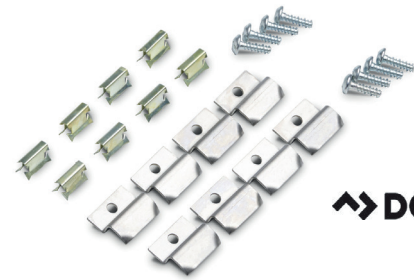
- 30346** Angled
- 30349** Straight







**NEW**



**DOMETIC**

**MICRO HEKI**

This ultra-compact roof light was specially designed for the bathroom area. It fits into a roof opening of 280 x 280 mm and can be opened and closed with a hand-lever system.

Ventilation opening angle: 100 cm square  
 Opening Width: 238 mm; Opening Height: 205 mm  
 Cut Out : 280 x 280 mm  
 Weight: 1.7 kg.

- 20260** with forced ventilation + flyscreen

---

- 20261** without forced ventilation + flyscreen

---

- 20262** with forced ventilation + flyscreen + blind

---

- 20263** without forced ventilation + flyscreen + blind

**MICRO HEKI ASSEMBLY KITS:-**

23-25 mm	<b>20265</b>	43 mm	<b>20265+20275</b>
26-27 mm	<b>20266</b>	44-45 mm	<b>20266+20275</b>
28-29 mm	<b>20267</b>	46-47 mm	<b>20267+20275</b>
30-31 mm	<b>20268</b>	48-49 mm	<b>20268+20275</b>
32-33 mm	<b>20269</b>	50-51 mm	<b>20269+20275</b>
34-35 mm	<b>20270</b>	52-53 mm	<b>20270+20275</b>
36-37 mm	<b>20271</b>	54-55 mm	<b>20271+20275</b>
38-39 mm	<b>20272</b>	56-57 mm	<b>20272+20275</b>
40-41 mm	<b>20273</b>	58-59 mm	<b>20273+20275</b>
42 mm	<b>20274</b>	60 mm	<b>20273+20275</b>



**20275** Micro Heki Adapter Frame



**DOMETIC**

**MINI HEKI STYLE**

This compact roof light admits just the right amount of light into the interior. Opens to three positions: fully open, half-open and bad-weather position.

Maximum opening angle: 50°;  
 Opening width: 380 mm; Opening Height: 364 mm.  
 Cut-Out: 400 x 400 mm;  
 Weight: 3.3 kg.

- 30250** with forced ventilation roof thickness 25-42mm

---

- 30257** without forced ventilation roof thickness 25-42mm

---

- 30395** with forced ventilation roof thickness 43-60mm

---

- 30397** without forced ventilation roof thickness 43-60mm



**DOMETIC**

**MIDI HEKI STYLE**

This upgraded version has improved safety features, aerodynamics, appearance and maintenance. With well-proven benefits such as the darkening blind and fly screen, as well as hassle-free cleaning, it ensures comfort and convenience while you're on the road.

Maximum opening angle: 60°;  
 Opening width: 585 mm; Opening Height: 404 mm.  
 Cut-Out: 700 x 500 mm;  
 Weight: 8.4 kg.

- 30370** White with lever with forced ventilation

---

- 30372** White with lever without forced ventilation



## FIAMMA VENT 28F

This roof light has an aerodynamic design for small rooms in leisure vehicles. This slim framed vent provides permanent ventilation and lets maximum light in. Supplied with integrated removeable mosquito net. Can be installed without drilling additional holes in the roof of the vehicle. A turbo fan can be added to this roof light. An optional kit to motorise the Vent 28F is available; fan diameter 180 mm. Dimensions : 280 x 280 mm. Weight : 1.8 kg.

- 30224** White
- 30218** Crystal
- 30279** Add On Turbo Kit



## FIAMMA VENT

This 400 x 400 mm vent is designed to provide permanent ventilation for constant exchange of air. Suitable for leisure vehicles it is fitted with an aluminium mosquito net and lets in maximum light. A patented rubber seal and high quality UV resistant materials guarantee a watertight system.

Dimensions : 400 x 400 mm. Weight : 2.8 kg.

- 30205** White
- 30206** Crystal



## FIAMMA VENT 50

This 500 x 500 mm vent has a pantograph opening allowing the vent to be opened on all four sides using handles which benefit from anti-theft locking. This vent is fitted with a black out blind and mosquito screen. Made from high quality UV resistant, rainproof and windproof materials. Can be installed without having to drill any additional holes in the roof of the vehicle.

Dimensions : 500 x 500 mm. Weight : 4.5 kg.

Outer frame : White; Inner Frame: Ivory.

- 30251W** White
- 30251C** Crystal



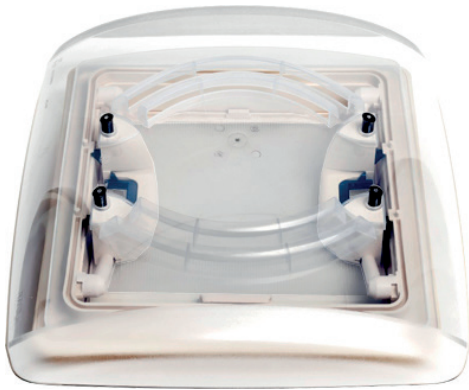
## FIAMMA TURBO VENT PREMIUM

This 12V DC motorised roof vent has finger touch operation and an electronic interface with signal LED's. Suitable for leisure vehicles this model is fitted with aluminium mosquito net and allows maximum light. A patented rubber seal and high quality UV resistant materials guarantee a watertight system.

Dimensions : 400 x 400 mm. Weight : 4.6 kg.

- 30455** White
- 30456** Crystal



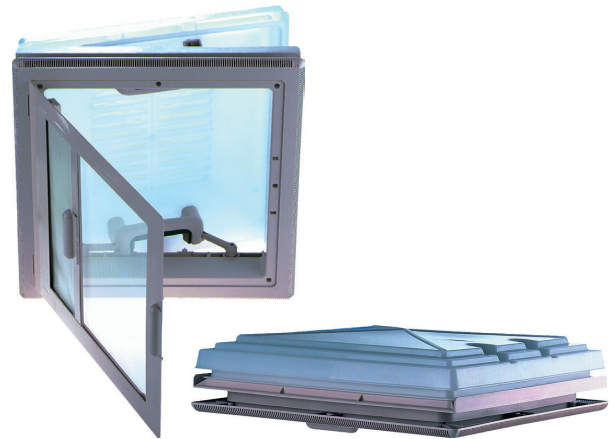


### MPK VISION VENT S ECO MODEL 27MM

Aerodynamic vent that drains away condensed water. Strong UV filter. Telescopic handles with locking device. Removable framed flynet. Roller blind. For roof thicknesses: 24-56 mm. Dimensions : 280 x 280 mm. Colour : White.

**NEW**

- 30262** S Eco Model 27
- 30511** Ducato Fitting Frame



### ROOFLIGHT MODEL 42

This vent come with a removable framed flynet. It has telescopic handles with locking device. For roof thicknesses: 24-56 mm.

Dimensions: 400 x 400 mm. Colour : White.

**NEW OPTIONS**

- 30265** Model 42 Rooflight
- 30512** Ducato Fitting Frame



### MPK VISIONSTAR M PRO 2 MODEL 49P

This vent has tinted glass/double glazed dome. The interior frame has a pleated blind and flynet. Improved noise reduction. For roof thicknesses : 25-60 mm. Dimensions: 400 x 400 mm. Colour : White.

**NEW OPTIONS**

- 30264** Non-Vented
- 30273** Vented
- 30274** Vented with LED lights
- 30512** Ducato Fitting Frame



### MPK VISIONSTAR L PRO MODEL 75P

This vent has tinted glass/double glazed dome. The interior frame has a pleated blind and flynet. Easy operation. Improved noise reduction. For roof thicknesses : 25-60 mm. Dimensions: 700 x 500 mm. Colour : White.

**NEW OPTIONS**

- 30371** Non-Vented
- 30269** Vented
- 30374** Vented with LED lights
- 30513** Ducato Front Fitting Frame
- 30514** Ducato Rear Fitting Frame



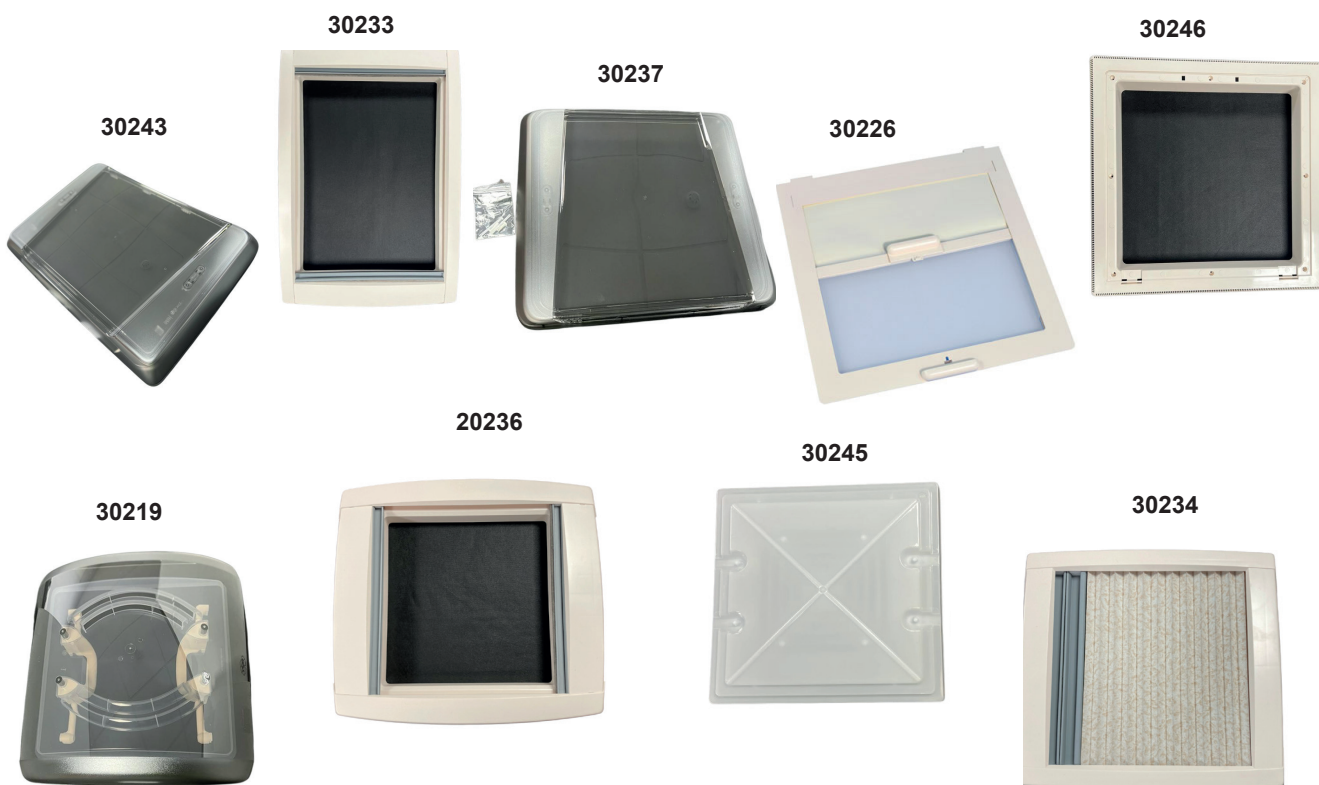


## MPK ROOF VENT SPARES



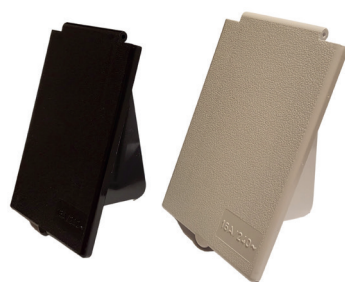
**NEW**

MPK Roof Vent Product	Model	Replacment Dome Part No,	Replacement Inner Frame Part No.	Replacement Flynet Part No.
VisionStar L	7503	<b>30243</b>	<b>30233</b>	<b>N/A</b>
VisionStar M	4903	<b>30237</b>	<b>30236</b>	<b>N/A</b>
Model 42	420	<b>30245</b>	<b>30246</b>	<b>30226</b>
Vision Vent S Eco	2753	<b>30219</b>	<b>30234</b>	<b>N/A</b>



**FIAMMA VENT EXTENSION KIT**  
Extension kit suitable for Fiamma roof vents.

**30321**



**NEW**

**MPK MAINS INLET REPLACEMENT LID**  
Replacement flap lids for the MPK flush fitting hook up adapter part numbers 30222W & 30222B. Available in Black or White.

- 30231** Black
- 30232** White





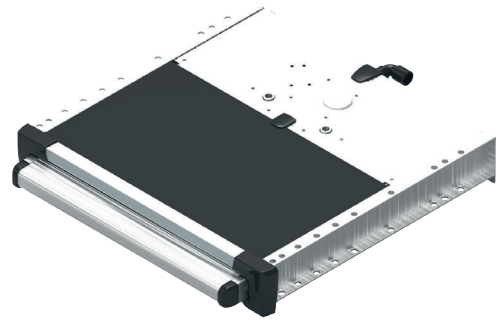
**THULE MANUAL STEP 400**

The Thule Omnistep 400 is a manual slide-out step featuring an anodised aluminium step with aluminium side plates.

Other features include:

- Locks into closed position.
- Installation brackets: different heights: 9/35/62/88 mm.
- Weight: 4.7 kg.
- Step width: 406 mm.
- Total width of step: 485 mm.
- Meets European EN 1646 standard.

20210



**THULE ELECTRIC STEP 400**

The Thule Omnistep Electric 400 is a 12-volt electric step featuring an anodised aluminium step with aluminium side plates.

Other features include:

- Sensor switch for connection of a warning light/buzzer (excludes warning light) so that you can't unknowingly drive away with step extended.
- Size: 406 x 452 x 436 mm.
- Weight: 4.7 kg.
- Step width: 406 mm.
- Total width of step: 485 mm.
- Meets with European EN 1646, EMV and CE standards.

20200



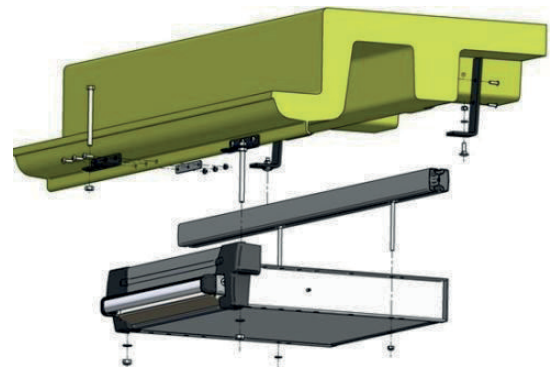
**ELECTRIC STEP 400 : FIAT DUCATO EURO 6**

The Thule Omnistep Electric 400 is a 12-volt electric step featuring an anodised aluminium step with aluminium side plates. It has the same features as the standard THULE electric 400 step (part 20200) but has been designed to fit the Fiat Ducato EURO 6.

Meets with European EN 1646, EMV and CE standards.

20211 Step

20223 Fitting kit



**THULE ELECTRIC STEP 400 : FITTING KITS**

20216 Renault Master 2010+

20217 Mercedes Sprinter 2006+

20218 Ford Custom 2015 onwards

**THULE RELAY**

Relay for the Thule 400 step..

20220





#### TELECO WING DIGITAL TV ANTENNA

This mini antenna is designed to receive UHF channels. It features a special circuit configuration and a high gain amplifier, making it possible to receive.

VHF B3 programmes. It is supplied with 5 metres of coaxial cable, connecting plug, amplifier, 2 outputs for TV sets and 4G filter. Power supply: 220 V, 12 and 24 V. Size: Ø : 310 mm

30603



#### TELECO TELEPLUS X2/39U DIGITAL TV AERIAL

This TV aerial is designed and manufactured to gain higher sensitivity to weak signals. Uses a polarity direction mechanism to receive all digital and analogue TV signals that are transmitted on both horizontal and vertical polarity with top performance.

The pack includes:

Low-noise amplifier with adjustable gain.

Double pole.

High gain 38 dB (with amplifier).

Power supply: 12/230 V. 390 mm mast for installation inside a suspended wall unit.

30619



#### COSMOS AERIAL

Cosmos 12 V 24 V/12 V digital TV aerial antenna omnidirectional 360°. The perfect touring aerial. Ideal for permanent roof mounting on your caravan, motorhome, canal boat, truck or horsebox.

Comes with an extra length of cable extension to make installation quick and easy and one-year manufacturer's warranty.

30670



#### MATRIX AERIAL

The Matrix digital antenna can receive digital and analogue terrestrial signals and has a high gain level with a built-in signal amplifier and high receiver sensitivity. The antenna is perfect for permanent fixture to a boat, caravan, truck or motorhome. The omnidirectional design eliminates the need to locate the direction of your local TV and radio transmitter. The antenna is supplied complete with a 12/24 V power adaptor.

30675



#### PREMIUM-GRADE FLIP-DOWN TV BRACKET

This under-cabinet mount fits LCD/LED flat-screen TVs and monitors from 15 to 37 inches and can also be used as a ceiling mount. This bracket fits TVs with a VESA mounting hole pattern of 75 x 75 (3" x 3"), 100 x 100 (4" x 4"), 200 x 100 (8" x 4"), 200 x 200 (8" x 8"). The sturdy mount features a space-saving design that conveniently tucks your flat panel display under a cabinet when not in use. The high-tech mount offers a 110° tilt and 180° swivel left and right for viewing angle adjustment.

30666







**DOMETIC FRESHJET FJX4 1500M**

This model is designed for small to medium sized vehicles. The Freshjet FJX4 1500M roof air conditioner quickly cools the vehicles interior with its two way air distribution system. It also dehumidifies the air and filters out dust particles. Powerful but quiet it ensures travellers can enjoy a comfortable journey. It has manual controls that set the desired temperature and airflow

**DOMETIC FRESHJET FJX4 1700 AND 200**

Fresh design, superior cooling performance, optimized airflow, amazing quiet operation - these are the outstanding features of Dometic's new generation of RV air conditioners. The two electronic models in the new Freshjet FJX4 series come with a convenient touch control panel, advanced CleanAir technology, remote control and a LED ambient light. The Freshjet FJX4 2200 has soft start-function, that ensures hassle free operation even on camp sites with low electrical circuit performance.

FRESHJET MODEL	FJX4 1500M	FJX4 1700	FJX4 2200
<b>Product Code</b>	29016 Black 29017 White	29018 Black 29019 White	29020 Black 29021 White
Best length of vehicle	5.5 metres max	6 metres max	7 metres max
Compressor cooling capacity	1500 watts/5800 Btu/h	1700 watts/7500 Btu/h	2200 watts/7500 Btu/h
Heating capacity	no heating	800 watts	1000 watts
Current Consumption			
Cooling (A)	<3.3	3.6	4.8
Heating (A)	No heating	<5.2	<5.2
Input voltage	220-240 volts AC/50 Hz	220-240 volts AC/50 Hz	220-240 volts AC/50 Hz
Required circuit protection	4	4	5
Refrigerant	R410c	R32	R32
Dimensions (W x H x D) mm	752 x 225 x 702	752 x 225 x 702	752 x 225 x 702
Roof opening (W x D) mm	400 x 400	400 x 400	400 x 400
Roof thickness	25-60 mm	25-60 mm	25-60 mm
Weight	25.8 kg	29 kg	30.4 kg
Test marks	E-approved to EMC / automotive directive		
Domestic FreshJet FJX ADBE Air distributor box, electronic control panel, LED lighting		29026	29026
Domestic FreshJet FJX ADBM Air distributor box, manual control	29025		
Dimensions (WxHxDmm)	579x59x518	579x48x518	579x48x518
Weight (kg)	4.2	3.9	3.9



### FIAMMA BIKE RACK : VITO/BONGO

Available for the Mercedes Vito with single rear door before 2004 and the Mazda Bongo. Easy installation with standard supplied brackets. No drilling to vehicle required. Supplied with 2 x rail quick red; 2 x Bike Block Pro 1 & 3; 1 x rack holder; 1 x security strap. Carries two bikes.

30545



### FIAMMA BIKE RACK : VW T5 PRO

The VW T5 Pro has a stylish design and harmoniously follows the line of the vehicle without covering the lights or number plate.

Simplicity and speed of installation/demounting and excellent rigidity on the vehicle's rear. The upper brackets are fastened to the reinforced points of the vehicle's rear; brackets are complete with plastic supports in the centre (free from any hooks). The lower part of the rack does not lean against the bumper. Equipped with a double lower reinforcing bar to ensure maximum stability. Rail ends are black.

30547



### FIAMMA BIKE RACK : VW T5 (SINGLE DOOR)

Available for the VW T5 (after July 2003) with single rear door (tailgate).

Easy installation with standard supplied brackets. No drilling to vehicle required. Supplied with 2 x rail quick red; 1 x Bike Block Pro 1 & 3; 1 x rack holder. Carries two bikes.

30539



### FIAMMA BIKE RACK : VW T5 (BARN DOORS)

Available for the VW T5 (after July 2003) with twin rear door (barn doors).

Easy installation with standard supplied brackets. No drilling to vehicle required. Supplied with 2 x rail quick red; 1 x Bike Block Pro 1 & 3; 1 x rack holder. Carries two bikes.

30539D



**FIAMMA BIKE RACK : VW T6**

Designed to carry 2 bikes for VW T6 vehicles with a tailgate. Includes:-

- 2 x Rail Quick Pro rails.
- Security Strip.
- Bike-Block Pro 1.
- Bike-Block Pro D2.
- Mounting brackets.

**30541**



**FIAMMA BIKE RACK : VW T6 PRO**

Bike rack designed for the Volkswagen T6 to be installed on the back wall of the vehicle with brackets supplied. Capacity two bikes carried as standard; up to four with extra rails and additional bike blocks. Maximum load: 60 kg. Supplied with 2 x quick/premium rails; 1 x Bike Block Pro and 2 x Bike Block Pro D.

**30578** Silver

**30578B** Black



**THULE WANDERWAY : VW T6 TAILGATE**

Thule WanderWay is quick and easy to assemble thanks to the special adaptation to the VWT6 minivan (not suitable for VW T5). It carries two bikes and can be expanded up to 4 bikes by adding a third and fourth bike rail. Alternatively you can transport two e-bikes with a total weight of up to 60 kg thanks to the robust construction. See website for detailed information.

**30588** WanderWay - VW T6

**30592** Rail for 3<sup>rd</sup> Bike

**30594** Rail for 4<sup>th</sup> Bike



**FIAMMA BIKE RACK : 200 DJ DUCATO**

The 200 DJ Ducato bike rack features articulated brackets for a quicker removal of the bike carrier.

Fits Fiat Ducato after 2006 (H2 and H3); Citroën Jumper after 2006 and Peugeot Boxer after 2006.

**30574** Black

**30576** Silver







**THULE ELITE VAN XT : DUCATO/JUMPER/BOXER**

Quick and easy assemble of the bicycle carrier without drilling using the new glued fastening clamp rail. Can be easily detached when not in use thanks to the smart connections. The doors can be opened with a loaded bike rack. For Ducato/Jumper/Boxer.

- For roof height H2 or H3.
- Bicycle platform adjustable in 3 height positions.
- For 2 wheels.
- Maximum load per rail: 19 kg.

- 30582 Silver
- 30586 Black



**FIAMMA BIKE RACK : FORD CUSTOM**

New version of Carry-Bike for campervans, designed for the new models of Ford Transit Custom and Ford Tourneo Custom. It adheres to the lower part of the rear with a contoured profile that follows the shape of the vehicle. Fits tailgate.

30577



**FIAMMA BIKE RACK : VW CRAFTER/MAN 2016 >**

A solid steel frame is installed utilising the standard anchoring points on the vehicle. It allows safe transport of up to three bikes, and the rear double doors can also be opened when the bike carrier is installed.

30579



**THULE ELITE VAN XT : CRAFTER**

Quick and easy assembly of the bike carrier without drilling using glued fastening clamp rails. Can be easily detached when not in use thanks to the smart connections. The doors can be opened with a loaded bike rack. Colour: Black.

- For 2 wheels.
- Load capacity per rail: 19 kg.
- Bicycle platform adjustable in 3 height positions.
- Wheel attachment with ratchet buckles.
- Rail distance 20 cm.
- Mounting width 75/83 cm.

30587





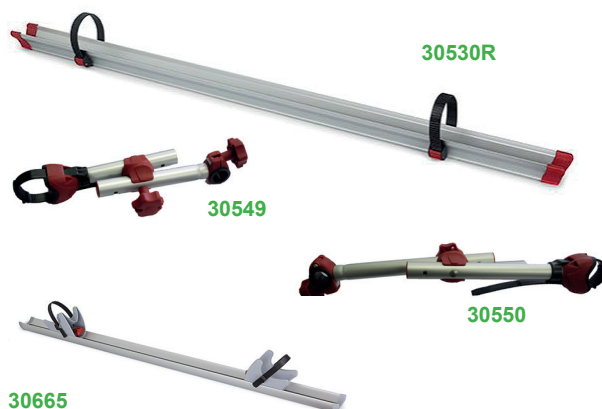
**NEW**

**LIPPERT R-BIKE DUCATO 2006+**

This black multi-purchase bike carrier can be installed on the back allowing the door to be opened when bikes are loaded. The R-Bike allows you to mount the tray style rail in three different height positions (standard, intermediate and lowered) to allow for easy loading and unloading of bikes.

Can be extended to fit three standard bikes by adding 3rd additional rail.

- 30710** R-Bike Ducato 2006+
- 30711** 3rd Additional Rail
- 30712** Locking Arm



**30665**

**FIAMMA BIKE RACK ACCESSORIES**

Fiamma bike rack accessories:-

- 30530R** Quick additional 1280 mm rail
- 30549** Adjustable Bike Block Pro D1
- 30550** Adjustable Bike Block Pro D2
- 30665** Premium Bicycle Rail



**DELUXE DJ DUCATO LADDER**

Supplied with fixing bars for easy and quick installation on the rear door. It can be combined with Carry-Bike 200 DJ. Compatible with Fiat Ducato, Citroën Jumper and Peugeot Boxer after 2006 and Ford Transit with double rear doors after 2006 before 2011.

**30655**



**DELUXE DJ DUCATO H3 LADDER**

High-quality aluminium ladder supplied with fixing bars for easy installation. It can be combined with 200 DJ DUCATO Bike rack. Compatible with Ducato Jumper H3 and Boxer H3 after 2006 and Transit with double rear doors after 2006 and before 2011.

**30650**



**NEW****Kampa****KAMPA TRIP**

The Trip guarantees a fast set up and take own even when touring solo. Packed with features including a large wet weather entrance, two full height windows with roll down blinds and a generous roll to side front door. The connecting tunnel has a convenient side door for easy access. Fibreglass frame. Clip in ground sheet, mesh front door. Weathershield TM 68D material.

Size : 2900 x 1800 mm (W x D).  
Tunnel width : 2900 mm. Tunnel Depth : 900 mm.  
Height at front : 2050 mm. Connection height : 1800 - 2100 mm. Weight : 9.95 kg.

43065

**NEW****Kampa****KAMPA TRIP AIR**

The Trip Air guarantees a fast set up and take own even when touring solo. Packed with features including a large wet weather entrance, two full height windows with roll down blinds and a generous roll to side front door. The connecting tunnel has a convenient side door for easy access. Clip in ground sheet, mesh front door. Weathershield TM 68D material.

Size : 2900 x 1800 mm (W x D).  
Tunnel width : 2900 mm. Tunnel Depth : 900 mm.  
Height at front : 2050 mm. Connection height : 1800 - 2100 mm. Weight : 11.75 kg.

43064

**NEW****Kampa****KAMPA TOURING AIR**

Designed to sit along side your camper van, the Touring Air provides the maximum amount of space without extending beyond your pitch. Has spacious living area, full height windows, mesh ventilation and large four berth inner tent. Other features include multi-point inflation. Durable air poles that inflate for simple set up and take down.  
Size : 6100 x 2800 mm (W x D). Tunnel Width : 2900 mm.  
Tunnel Depth : 900 mm. Connection Height : 1800 - 2100 mm. Height at front : 2100 mm. Weight : 23.19 kg.

43063

**NEW****Kampa****KAMPA PRIVVY**

Kampa Privvy toilet tent with zip up door.  
Width : 1200 mm  
Height: 1900 mm  
Depth : 1200 mm  
Weight: 2.78 kg.

43072

**KAMPA WHISTLING KETTLE**

2 litre whistling kettle.  
Available in three colours.

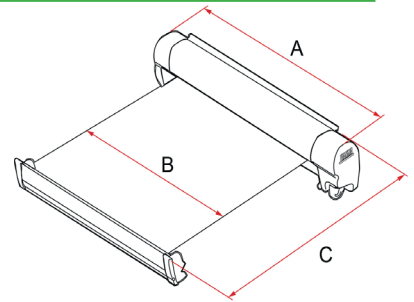
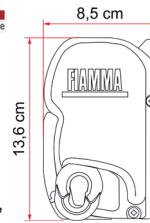
43077 Midnight Blue

43078 Sunset Yellow

43079 Ember Red

**Kampa****NEW**





### FIAMMA F45S AWNINGS

Enhances any motorhome or campervan. These awnings are user friendly, silent and fast to erect. Made from aluminium. Excludes fixing brackets.

Product Code	Colour	Awning length (A)	Canopy length (B)	Extension length (C)	Shape surface	Net Weight
30600-2.6	White/Grey	2630 mm	2470 mm	2000 mm	4.9 m <sup>2</sup>	19.5 kg
30601-2.6	Black/Grey	2630 mm	2470 mm	2000 mm	4.9 m <sup>2</sup>	19.5 kg
30602-2.6	Titanium/Grey	2630 mm	2470 mm	2000 mm	4.9 m <sup>2</sup>	19.5 kg
30600-3.0	White/Grey	3080 mm	2920 mm	2500 mm	7.3 m <sup>2</sup>	23 kg
30601-3.0	Black/Grey	3080 mm	2920 mm	2500 mm	7.3 m <sup>2</sup>	23 kg
30602-3.0	Titanium/Grey	3080 mm	2920 mm	2500 mm	7.3 m <sup>2</sup>	23 kg
30601-3.25	Black/Grey	3230 mm	3070 mm	2500 mm	7.7m <sup>2</sup>	26 kg

### FIAMMA F80S AWNINGS

An awning with an extremely small cross-section to integrate it even better into the vehicle's contour.



Product Code	Colour	Awning length (A)	Canopy length (B)	Extension length (C)	Shape surface	Net Weight
30605-3.2	Black/Grey	3200 mm	3080 mm	2500 mm	7.7m <sup>2</sup>	29 kg
30605-3.7	Black/Grey	3700 mm	3580 mm	2500 mm	9.0m <sup>2</sup>	32 kg

**NEW**

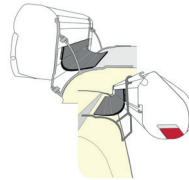


#### F45S MOTOR KIT

12V motor kit that opens/closes F45S awnings.

- 30631 Black
- 30632 Silver

**NEW**



#### F45S RAIN GUARD

F45S rain guard. 3 metre length.

30633

**NEW**



#### F80 MOTOR KIT

12V motor kit that opens/closes F80S awnings.

30635

### AWNING BRACKETS

Product Code	Vehicle	Awning
30319	VW T4	F45S/Thule/Dometic
30473	Thule Awning Bracket : VW Crafter	F45S/Thule/Dometic
30475	Thule Awning Bracket : Ford Custom	F45S/Thule/Dometic
30476	Thule Awning Bracket : Renault Trafic	F45S/Thule/Dometic
30654	T5/T6 multi-van with lift up roof	F45S/Thule/Dometic
30657	T5/T6 with multi rail (Brandup lift up)	F45S/Thule/Dometic
30684	New Ford Custom	F45S/Thule/Dometic
30685	Renault Trafic 2015 onwards	F45S/Thule/Dometic
30689	Crafter/MAN 2016+ Excl. Roof Rail	F80S
30690	VW Crafts after 2017	F80S
30692	VW Crafter/Sprinter 2006-2016	F80S
30695	Ducato/Boxer/Jumper H3 /2006>	F80S
30696	Dometic Awning Bracket : T5/T6	Dometic

**NEW**



#### AWNING ARM LED LIGHT

4 LED lights (2 pairs) that attach to the articulated arm of the awnings (allows closure of awning). Complete with 5m of cable for quick Connection. Suitable for F45 & F80 awnings.

30634

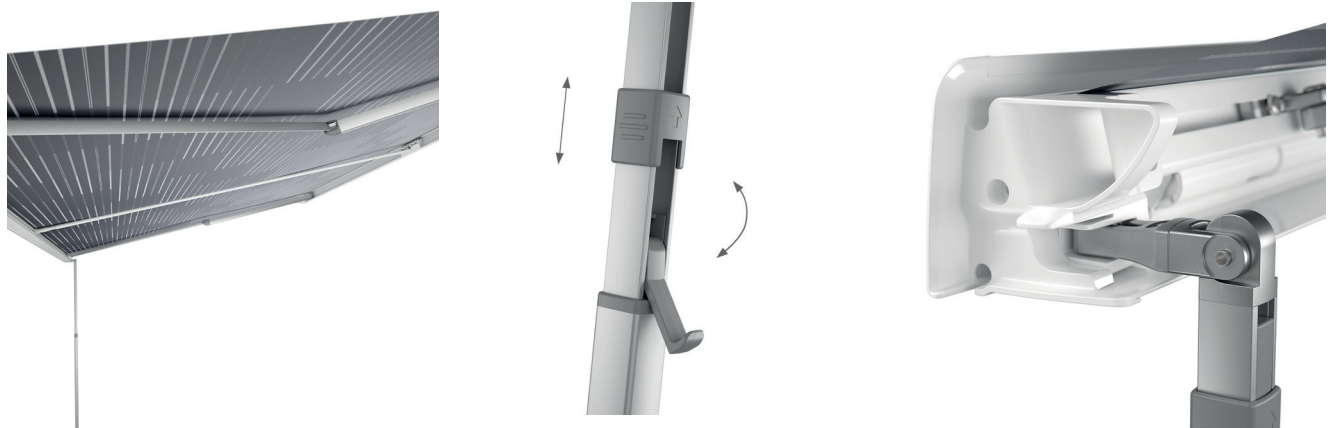
**↔ DOMETIC**



**DOMETIC PERFECTWALL**

The Dometic awning innovative design improves both safety and convenience and has patented slide-out support legs and features an EasyLock system that assists operation.

Product Code	Description	Fabric Colour	Housing Colour	Extension	Length	Weight
<b>30701-2.6</b>	Dometic PW1000	Horizon Grey	Anthracite	2000	2632	21 kg
<b>30701-3.0</b>	Dometic PW1000	Horizon Grey	Anthracite	3000	3032	24 kg
<b>30696</b>	Dometic awning bracket for VW T5/T6					



**FIAMMA STORM TIE DOWN KIT**

Fiamma tie down kit comprises of 11 metres of black adjustable band, stakes and tension spring. It fits crank awnings up to 6000 mm long

**30698**



**FIAMMA AWNING HANGER KIT**

Set of six durable plastic hangers with stainless steel 'S' hook. Colour: Grey.

**30699**



**THULE LEVELLER & BAG**

Ramps with 3 different height levels. Colour : Black. UV resistant durable HDPE Material.

**30589**

# INDEX

## A

Accuride	16
Adapter	78
Adhesive Sealer	25
Adhesive Tape	25
Aerial	97
Air Conditioning	98
Annexes	103
Arbor	12
Autosound	75
Awning Bracket	105
Awning Light	105
Awnings	104-105

## B

Backing Box	66
Baldacci	18
Battery	64
Battery Terminals	64
Bearing	12
Bedframe	22
Berker	64
Berker	67
Bike Racks	99-102
Blanking End	53
Blaupunkt	60
Bonus	61
Bridle Rack	30
Bullfinch	52, 90-91

## C

Cable	63
Cable Clip	63
CAN	32
Case Clip	19
Catch	20
CBE	60
Charger	60
Cigarette Lighter Socket	63
Clamp	12
Cleaner	25
CO Alarm	31
Coat Hook	20
Combination Units	36,37,38
Comet	80,90
Connector	77, 78, 84
Connector Strip	65
Consumer Units	63
Control Panels	61

## C CONT.

Conversion	62
Converter	53
Convuluted Hose	79
Coolboxes	42
Copper Pipe	51
Corner Brace	17
Corner Connector	17
Coupling	53
Cranked Table Leg	14
Crimping Set	63
Curtains	26-27
Cutter	12

## D

Dometic	32-33, 42-48, 92,98, 105
Door Lock	19
Door Retainer	20
Door Stay	17
Door Stops	17

## E

Easi-slide	90
Edging	13
Elbow	53, 77-78
End Caps	13
Equal Tee	53-78
Estorfer	13
Expansion Tank	80

## F

Fiamma	14, 80, 82, 86, 93, 99-104
Fire Extinguisher	31
Fitting Kits	84
Fixed Toilets	87
Floor Seals	51,79
Folding Table Leg	14,15
Fresh Water Label	79
Frilight	69,70,71,72
Fuse Holder	65

## G

Gas Bottle Box	55
Gasstore	55
Glue	25
Grills	39

## H

Handles	16
Hinge	16,17
Hinged Cover	66
Hobs	34,35
Hook up Adapters	62
Hook up Leads	62
Hose	51,79
Hot Air Heater	58,59

## I

Induction Hobs	35
Internet	74
Isolator Switch	53,64

## J

Jerry Can	81
Jubilee Clips	55

## K

Kampa	39, 103
Kenwood	75
Kettles	103
Kitchen Taps	40,41
KUMA	74,97

## L

Labcraft	71,72,73
Ladders	23,102
Leak Detector Spray	51
Leveller	104
Lights	69-73
Lining Carpet	24
Lippert	102
LPG Connectors	53
LPG Pipework	51
Luggage Rack	30
Luton Safety Net	22



# INDEX

## M

Mains Outlet	63
Mains Tester	63
Mats	23
Mattress	22
Metal Hooks	30
Microwave	39
Mikuni	58
Modesty Block	17
Motor Kits	104
MPK	79,94

## N

Nozzles	53
---------	----

## O

Ovens	39
-------	----

## P

P Clips	17,55,79
Panels	60,67
Pigtail	51
Portable Toilets	86
Power Management	61
Powerdock	68
Princess Catch	19
Profile	13
Propex	56,58
Pundmann	57
Purvario	50
Push Button Knob	18,19
Push Fit	78

## R

Ratchet	79
Refrigeration	42-48
Regulators	52
Retaining Clamp	64
Rocker Switches	66
Roll Rank	82
Roof Bed	22
Roof Vent	92-94
Rovert	60
Runners	16

## S

Saddle Racks	30
Sargent	60,61,76
Sealer	25
Seat Swivels	28-29
Shower Head	91
Shower Hose	91
Shower Point	90
Shower Raiser	91
Shower Trays	89
Shut Off Valve	78
Sink Waste	79,89,91
Sinks	32
Site Plug	62
Slotter	12
Smoke Alarm	31
Snap On Battery Terminals	64
Socket	66
Solar	76
SolarGo2	76
Sony	75
Spares	49,95
Speakers	75
Step Switch	66
Steps	96
Sterling	60,61
Storage	23,50
Straight Connector	77
Stubbs	30
Superflex	24
SureCal	57

## T

Tabel Rail	15
Table legs	14
Table Top Storage	15
Tambour Doors	21
Tap	81
Telair	76
Teleco	74,76,97
Telescopic Table Leg	14
Thermal Blinds	23
Thetford	86,87,91
Thetford Recess Panel	89
Thule	96,100,101,105
Tie Down Kit	105
Tie Rin	30
Tip Up Washbasin	88
Toilet Door Lock	18
Toilet Tent	103
Toilet Waste Door	91
Trend	12
TV Point / Satelite Point	66

## U

Underslung Tank	84
USB	68
USB Point	66

## V

Vanity Unit	88
Vent Cover	54
Vents	54
Vitri Frigo	42-48
Vohringer Ply	03-11

## W

W4	62
Wardrobe Rail	14
Wash Basin	88
Washroom Taps	90
Waste Tank	82
Water Filler	79
Water Fittings	77
Water Heater	56,57,58
Water Level Gauge	85
Water Master	80
Water Outlet	90
Water Pipe	78
Water Pump	80
Water Sender Probe	85
Water Tank	82,83,84
Webtack	25
Whale	56,80,90
Wheel Arch Tank	82,83



15 Bennetts Field  
Wincanton  
Somerset  
BA9 9DT

01963 824792

[www.grassroutesleisure.co.uk](http://www.grassroutesleisure.co.uk)

fixtures & fittings | kitchens | washrooms | LPG | heating | electrical | water

V: 042023