

TRADE CATALOGUE



Grassroutes
LEISURE LTD

Suppliers to the leisure & leisure vehicle industry



JERRY CANS



WATER & UNDERSLUNG TANKS



WHEEL ARCH TANKS



FIXINGS & CONNECTORS



GAUGES



01963 824792

www.grassroutesleisure.co.uk



JERRY CANS

JERRY CAN

12 LITRES

A standard wide neck canister with built in handle.

Suitable for fresh water.

Colour: White

Size: 410 x 255 x 125 mm (W x H x D)

Weight: 0.6 kg

Outlet: 3/4" BSP

Lid: 3"

13 LITRES

Made from WRAS approved polyethylene & suitable for drinking water. Includes 3/4" BSP tap.

Colour: White

Size: 505 x 325 x 100 mm (W x H x D)

Weight: 1.8 kg

Outlet: 3/4" BSP

Lid: 2"

20 LITRES

A multi wide neck canister with built in handle & tap.

Suitable for fresh water.

Colour: White

Size: 350 x 300 x 240 mm (W x H x D)

Weight: 0.8 kg

Outlet: 2" BSP

Lid: 3.5"



32022 12L



13L 32083



UK MADE



32024 20L



JERRY CAN

5 LITRES | 10 LITRES | 25 LITRES

These jerry cans are manufactured from HDPE plastic. They can withstand tough commercial and industrial environments.

HDPE has high impact-resistance and high resistance against many strong and weak chemicals. It is ideal for storing oils, detergents, lubricants and fuels safely. Food grade approved and UN certified, these jerry cans come with a sturdy screw cap for extra protection.

Ideal for leisure vehicles as they can be used with submersible pumps. They are stackable and are available in three sizes:-

5 LITRES

Colour: White

Size: 190 x 260 x 140 mm (W x H x D)

Weight : 0.3 kg

Outlet: 2" BSP

Lid: 2"

10 LITRES

Colour: White

Size: 230 x 320 x 190 mm (W x H x D)

Weight : 0.4 kg

Outlet: 2" BSP

Lid: 2"

25 LITRES

Colour: White

Size: 300 x 460 x 240 mm (W x H x D)

Weight: 0.8 kg

Outlet: 2" BSP

Lid: 2"



UK MADE



30090 25L

30091 10L

30092 5L

ACCESSORIES

ADD
ON

JERRY CAN TAP

Wide nozzle. Available in two sizes:

30097 DIN51 for 30091/30092

30098 DIN61 for 30090

30084 DIN61 for 30090





JERRY CAN

10 LITRES | 20 LITRES | 25 LITRES | 30 LITRES

These heavy duty plastic jerry cans are produced in Italy and made of polyethylene, a plastic material that possesses the HDPE certification. They are suitable for foods and liquids. We offer 4 sizes all with convenient pouring spout.

10 LITRES

Colour: White

Size: 260 x 360 x 145 mm (W x H x D)

Weight: 0.4 kg
Outlet: ½" BSP
Lid: 1.5"

20 LITRES

Colour: White

Size: 340 x 440 x 190 mm (W x H x D)

Weight: 0.7 kg
Outlet: ½" BSP
Lid: 1.5"

25 LITRES

Colour: White

Size: 340 x 480 x 220 mm (W x H x D)

Weight: 0.8 kg
Outlet: ½" BSP
Lid: 1.5"

30 LITRES

Colour: White

Size: 340 x 510 x 240 mm (W x H x D)

Weight: 1 kg
Outlet: ½" BSP
Lid: 1.5"





WASTE WATER TANK

23 LITRES

Black plastic 23 litre waste water tank with 2 x 64 mm caps.

Colour: Black

Size: 410 x 335 x 210 mm (W x H x D)

Weight: 1 kg

Outlet: 2" BSP

Lid: 2"

23L 30089



WATER ROLL TANKS

23 LITRES

Fiamma roll-tanks with fold down handle making them easy to move and store. Compact size – fits through normal sized vehicle doors.

Colour : Blue - fresh water : Grey - waste water

Size: 330 x 500 - 1000 x 250 mm (W x H x D)

Weight: 3 kg

Outlet: 1" BSP

Lid: 3"

23L 30146



23L 30144



Waste tank includes discharge cap.





WATER TANKS

TOWER TANKS

25 LITRES

Made from WRAS approved polyethylene suitable for drinking water & other liquids.

Colour: White

Size: 260 x 435 x 340 mm (W x H x D)

Weight: 3 kg

Outlet: 3/4" BSP

Lid: 4"

25L 32060



UK MADE



28 LITRES

Made from WRAS approved polyethylene suitable for drinking water & other liquids.

Colour: White

Size: 200 x 580 x 270 mm (W x H x D)

Weight: 3 kg

Outlet: 1/2" BSP

Lid: 4" Ext Plain, 4" Ext Vent

28L 32061



UK MADE



31 LITRES

Made from WRAS approved polyethylene suitable for drinking water & other liquids.

Colour: White

Size: 176 x 460 x 436 mm (W x H x D)

Weight: 3.5 kg

Outlet: 4 x 1/2" BSP - inlet, vent & 2 outlets

Lid: 5" Int Plain

+ PLUMB KIT 32105



UK MADE



+ FITTING KIT 32104

31L 32069

36 LITRES

Made from WRAS approved polyethylene suitable for drinking water & other liquids. With vented screw cap.

Colour: White

Size: 290 x 330 x 430 mm (W x H x D)

Weight: 3.2 kg

Outlet: 3/4" BSP

Lid: 6" Int Plain

36L 32062



UK MADE





FLAT WATER TANKS

12 LITRES

Made from WRAS approved polyethylene suitable for drinking water & other liquids.

Colour: White

Size: 200 x 150 x 420 mm (W x H x D)

Weight: 1.3 kg

Outlet: 2 x 3/4" BSP

Lid: 4" Ext Plain, 4" Ext Vent



UK MADE



12L 32068

40 LITRES

WRAS approved polyethylene suitable for drinking water & other liquids.

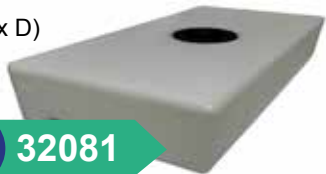
Colour: White

Size: 370 x 170 x 750 mm (W x H x D)

Weight: 4 kg

Outlet: 1 x 1/2" inlet & 3 x 3/4" outlet

Lid: 5" Int Plain



40L 32081

51 LITRES

WRAS approved polyethylene suitable for drinking water & other liquids.

Colour: White

Size: 400 x 120 x 1200 mm (W x H x D)

Weight: 8 kg

Outlet: 1/2" BSP

Lid: 5" Int Plain



51L 32080

60 LITRES

Made from WRAS approved polyethylene suitable for drinking water & other liquids.

Colour: White

Size: 350 x 250 x 800 mm (W x H x D)

Weight: 5.5 kg

Outlet: 3/4" BSP

Lid: 5" Int Plain



UK MADE



60L 32063

70 LITRES

Fiamma stackable water tank with fittings. Suitable for fresh water.

Colour: Blue

Size: 700 x 240 x 470 mm (W x H x D)

Weight: 3.7 kg



70L 30088



30085 Spare seal for red cap.

30087 Spare red cap & seal.





74 LITRES

Made from WRAS approved polyethylene suitable for drinking water & other liquids.

Colour: Blue

Size: 700 x 240 x 475 mm (W x H x D)

Weight: 5.2 kg

Outlet: not included

Lid: 5.5"

74L 30095



Grassroutes
LEISURE LTD
exclusive

95 LITRES

Made from WRAS approved polyethylene suitable for drinking water & other liquids.

Colour: White

Size: 500 x 350 x 620 mm (W x H x D)

Weight: 8 kg

Outlet: 3/4" BSP

Lid: 5" Int Plain

95L 32065



+ FITTING KIT 32099



UK MADE

75 LITRES

Made from WRAS approved polyethylene suitable for drinking water & other liquids.

Colour: White

Size: 450 x 305 x 600 mm (W x H x D)

Weight: 6 kg

Outlet: 3/4" BSP

Lid: 8" Int Plain, 8" Int Vent

75L 32064



UK MADE



UK MADE



105 LITRES

Made from WRAS approved polyethylene suitable for drinking water & other liquids.

Colour: White

Size: 500 x 300 x 750 mm (W x H x D)

Weight: 9 kg

Outlet: 3/4" BSP

Lid: 5" Int Plain

105L 32066



UK MADE

125 LITRES

Made from WRAS approved polyethylene suitable for drinking water & other liquids.

Colour: White

Size: 460 x 290 x 1100 mm (W x H x D)

Weight: 10 kg

Outlet: 3/4" BSP

Lid: 8" Int Plain, 8" Int Vent

125L 32067



UK MADE



UNDERSLUNG TANKS

63 LITRES

Designed for: RHD VW Crafter/MAN TGE after 2017. MWB/ FWD/RWD & 4WD variants.

Made from WRAS approved polyethylene suitable for drinking water & other liquids.

Complete with brass M8 moulded threaded inserts for easy mounting when used with the complete bracket kit. Three moulded brass vents and moulded inlet and outlet with sump.

Colour: Black

Size: 283 x 265 x 1332 mm (W x H x D)

Weight: 8 kg

Outlet: 2 x 3/4" BSP

Lid: 5" Int Plain



UK MADE



63L 32073

FITTING KITS



32102 Front Wheel Drive

32103 Four Wheel Drive

69 LITRES

Designed for: VW T5 (03) - T6.1 (present) excludes 4motion.

Made from WRAS approved polyethylene suitable for drinking water & other liquids. Fits in front of spare wheel to vehicles listed below.

Colour: Black

Size: 960 x 225 x 1000 mm (W x H x D)

Weight: 9 kg

Outlet: 1/2" BSP

Lid: 5" Int Plain



UK MADE



32077 69L



69 LITRE FITTED



 FITTING KIT: INCLUDED WITH TANK



90 LITRES

Designed for: VW Crafter / MAN TGE (after 2017) LWB / XLWB fits FWD, RWD & 4WD variants.

Made from WRAS approved polyethylene suitable for drinking water & other liquids.

Colour: Black

Size: 283 x 266 x 2012 mm (W x H x D)

Weight: 12 kg

Outlet: 1" BSP, 2 x 3/4" BSP

Lid: 5" Int Plain



UK MADE

32079 90L



FITTING KITS



32102 Rear Wheel Drive

32103 Four Wheel Drive



94 LITRES

Designed for: VW Crafter / MAN TGE after 2017 MWB in RWD & 4WD variants.

Made from WRAS approved polyethylene suitable for drinking water & other liquids. Complete with brass M8 moulded threaded inserts for easy mounting when used with the complete bracket kit. Three moulded brass vents and moulded inlet and outlet with sump.

Colour: Black

Size: 283 x 355 x 1332 mm (W x H x D)

Weight: 9.5 kg

Outlet: 2 x 3/4" BSP

Lid: 5" Int Plain



UK MADE

94L 32082



+ FITTING KIT
32103

180 LITRES

Designed for: VW Crafter / MAN TGE after 2017 LWB/XLWB front wheel drive versions only.

Made from WRAS approved polyethylene for drinking water & other liquids. Will fit left and right hand drive vehicles.

Colour: Black

Size: 1260 x 230 x 1600 mm (W x H x D)

Weight: 23 kg

Outlet: 2 x 1/2" BSP

Lid: 5" Int Plain

180L 32072

+ FITTING KIT
32101



UK MADE



62 & 92 LITRES

Designed for: Ducato/Relay/Boxer 2006+.

Made from WRAS approved polyethylene suitable for drinking water & other liquids. Fiat Ducato/Citroen Relay/Peugeot Boxer 2006+ in L3 & L4 lengths Mounted to the cross members starting 1 complete bay behind the exhaust silencer. Can be fitted as a pair or individually. NOTE : 2 tanks the same size can not be fitted together. Tanks have moulded M8 brass inserts for mounting. Optional stainless steel fitting kit also available.

Colour: Black

Size:

62 litre : 570 x 760 x 180 mm (W x H x D)

92 litre : 890 x 760 x 180 mm (W x H x D)

Weight:

62 litre : 8.5 kg

92 litre : 12 kg

Outlet: 1 x 1/2" BSP + 1 x 1/4" BSP

Lid: 5" Internal



92L 32085

32084 62L

 **FITTING KIT**
32106





WHEEL ARCH TANKS

24 LITRES

Designed for: Vans, pick-ups, campers, campervans & motorhomes.

Made from WRAS approved polyethylene suitable for drinking water & other liquids. This tank has 6 x M* inserts moulded into the tank for easy mounting.

Colour: Black

Size: 150 x 500 x 750 mm (W x H x D)

Weight: 3 kg

Outlet: ½" BSP

Lid: 4" Int Plain

24L 32070



+ FITTING KIT
32071



UK MADE

57 LITRES

Designed for: Vans & pick-ups

Made from WRAS approved polyethylene suitable for drinking water & other liquids. This tank has 11 x M8 inserts moulded into the tank for easy mounting. Requires venting.

Colour: Black

Size: 355 x 500 x 750 mm (W x H x D)

Weight: 6.5 kg

Outlet: ½" BSP

Lid: 5" Int Plain

57L 32075



+ FITTING KIT
32076



UK MADE



100 LITRES

Designed for: Vans & pick-ups

Made from WRAS approved polyethylene suitable for drinking water & other liquids. This tank has 10 x M8 inserts moulded into the tank for easy mounting. Requires venting.

Colour: Black

Size: 260 x 680 x 1100 mm (W x H x D)

Weight: 11 kg

Outlet: 1 x ½" BSP

Lid: 5" Int Plain

100L 32078



+ FITTING KIT 32100



UK MADE

68 LITRES

Designed for: VW T5 (03) - T6.1 (present) including 4motion vans.

Made from WRAS approved polyethylene suitable for drinking water & other liquids. Fits in place of the spare wheel.

Colour: Black

Size: 650 x 275 x 670 mm (W x H x D)

Weight: 7 kg

Outlet: ½" BSP

Lid: 5" Int Plain

68L 32074



UK MADE



FIXINGS & CONNECTORS

WATER FILLER

Locking filler cap complete with keys.

Colour: Black or White

Size: Ø 40 mm



Black
30128



White
30140

WATER FILLER

Locking filler cap complete with keys.

Colour: Black or White

Size: Ø 40 mm



Black
30126



White
30125



FRESH WATER SIGN

Single self-adhesive fresh water sign.

Colour: Blue/White

Size: 60 x 55 mm (W x H)

71001



HOSE INLET

Robust plastic hose inlet socket.

Colour: Grey

Size : Ø 12 mm

30174



HOSE OUTLET

Robust plastic hose outlet socket.

Colour: Grey

Size : Ø 19 mm

30172



QJ KWIQ FIT OUTLET

Colour: Black



32119 ½" Male : ⅜" Female

32120 ½" Male : ¼" Female

32121 1" Male : ¾" Female

32122 1 ¼" Male : 1" Female

32123 1 ½" Male : 1 ¼" Female

32124 2" Male : 1 ½" Female

HOSETAIL

1 ¼" BSPF x 40 mm

Colour: Black

Size : Ø 19 mm

32130





TANK CONNECTOR

Includes:

- 1 x back nut (1/2")
- 1 x washer (1/2")
- 1 x vent hosetail (1/2")

1/2" 30170



ELBOW HOSE TAIL

Includes:

- 1 x hosetail 90° (1/2")
- 1 x washer (1/2")
- 1 x backnut (1/2")

1/2" 32097



32096 3/4"

Includes:

- 1 x hosetail 90° (3/4")
- 1 x backnut (3/4")
- 1 x washer (3/4")

SUBMERSIBLE PUMP FITTING KIT

Includes:

- 1 x bulkhead 90° (1/2")
- 1 x back nut (1/2")
- 1 x cable gland
- 1 x washer (1/2")

1/2" 32098



WATER TANK PIPE FITTING KIT

Includes:

- 1 x 90° x 40 mm filler
- 2 x back nut (1/2")
- 1 x back nut (1 1/4")
- 2 x vent hosetail (1/2")
- 1 x hosetail (3/4")
- 2 x washer (1/2")
- 1 x seal (1 1/4")

32099





GAUGES

LED WATER LEVEL INDICATOR

With one push of the test button, you are able to monitor the water levels of one tank.

There is no need to wire in a 12-volt supply as the LED indicator gauge comes complete with its own battery, which is easily replaced when the need arises. For sender probe see item 20047.

Size: 65 x 65 x 16 mm (W x H x D)



Single LED
20045



LCD WATER LEVEL INDICATOR

These new technology gauges have a coloured LCD analogue display with LED backlighting for crystal clear viewing. Five levels are displayed. A 12-volt supply is required. These gauges only draw 50 mA so they can be left on without flattening your on-board battery. There is a power on/off switch to turn the gauge off when the caravan is not in use. See item 20047 for sender probe.

Size: 115 x 108 x 20 mm (W x H x D)



Single LCD
20046



SENDER PROBE

This easy-to-fit tank sender probe only requires one 22 mm (7/8") hole in the side of the tank and suits tanks from 100 mm to 280 mm (4" to 11") deep. Length: 5 m.

The sender probe is sealed by a special grommet which is compressed in the hole when the nut is tightened and measures the water level by contact with the five sensors along the arm. It has no moving parts. For use with 20045 & 20046.



20047



PROGRAMMABLE WATER TANK GAUGE



Programmable LED/LCD water tank indicator. Comes preprogrammed to suit standard sender and 180/200 mm deep tanks. LED is battery operated. LCD is 12V operated.



LED INDICATOR
Size : 65 x 65 x 16 mm

Single LED
20073

Double LED
20079



LCD INDICATOR
Size : 115 x 108 x 20 mm

Single LCD
20105

Double LCD
20106



PROGRAMMABLE SENDER PROBE

Two lengths available. For use in fresh and grey water tanks. Self sealing grommet. No messy, toxic glues. For use with 20073, 20079, 20105 & 20106.

20088 up to 280 mm

20089 up to 700 mm




CABLE

Durable, easy 'plug & play' installation. Available in 3 lengths. waterproof with IP67 rating. For use with 20073, 20079, 20105 & 20106.

20066 2.5 metres

20067 5.0 metres

20068 7.5 metres





Suppliers to the leisure & leisure vehicle industry

15 Bennetts Field
Wincanton
Somerset
BA9 9DT

01963 824792

www.grassroutesleisure.co.uk